

À des fins de recherche uniquement

Anticorps Polyclonal de lapin anti-EphA4



Numéro de catalogue: 21875-1-AP

Phare

6 Publications

Informations de base

Numéro de catalogue:

21875-1-AP

Taille:

150ul, Concentration: 500 µg/ml by Nanodrop;

Hôte:

Lapin

Isotype:

IgG

Immunogen Catalog Number:

AG16233

Numéro d'acquisition GenBank:

BC026327

Identification du gène (NCBI):

2043

Nom complet:

EPH receptor A4

MW calculé

986 aa, 110 kDa

MW observés:

120 kDa

Méthode de purification:

Purification par affinité contre l'antigène

Dilutions recommandées:

WB 1:500-1:2000

IP 0.5-4.0 ug for IP and 1:500-1:2000 for WB

IHC 1:1000-1:4000

IF 1:50-1:500

Applications

Applications testées:

FC, IF, IHC, IP, WB, ELISA

Demandes citées:

Cell treatment, FC, IF, WB

Spécificité de l'espèce:

Humain, rat, souris

Espèces citées:

Humain, souris

Contrôles positifs:

WB : tissu cérébral de souris, tissu cérébral de rat

IP : tissu cérébral de souris,

IHC : tissu cérébral de souris,

IF : Cellules neuronales,

Remarque-IHC: il est suggéré de démasquer l'antigène avec un tampon de TE buffer pH 9,0; (*) À défaut, le démasquage de l'antigène peut être effectué avec un tampon citrate pH 6,0.

Informations générales

EphA4 is a member of the Eph receptor tyrosine kinase family and has important functions in the developing and adult nervous system (PMID: 14697664). The Eph receptors comprise a large family of closely related transmembrane tyrosine kinases that actively signal when bound to their ephrin ligands. The Eph receptors are characterized by an extracellular region with a unique cysteine-rich motif extending over its amino-terminal half, followed by two fibronectin type III motifs (PMID: 9530499). They are divided into two sub-groups (EphA and EphB) based on the similarity of their extracellular domain sequences and their affinities for binding ephrin-A and ephrin-B ligands (PMID: 11114742). EphA4 is involved in commissure formation within the forebrain, axonal guidance in the corticospinal tract, regulation of the central pattern generator that provides normal locomotor function and axonal regeneration following spinal cord injury (PMID: 30061574). EphA4 has been implicated as a disease modifier of amyotrophic lateral sclerosis (ALS) (PMID: 22922411).

Publications notables

Autrice	Pubmed ID	Journal	Application
Laurel B Darragh	36434392	Nat Cancer	FC
De Cai	31150684	Life Sci	WB
Elizabeth A Kowalski	35737458	JCI Insight	FC

Stockage

Stockage:

Stocker à -20°C. Stable pendant un an après l'expédition.

Tampon de stockage:

PBS avec azoture de sodium à 0,02 % et glycérol à 50 % pH 7,3

L'aliquotage n'est pas nécessaire pour le stockage à -20C

*** Les 20ul contiennent 0,1% de BSA.

For technical support and original validation data for this product please contact:

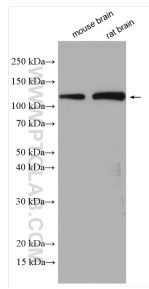
T: 1 (888) 4PTGLAB (1-888-478-4522) (toll free in USA), or 1(312) 455-8498 (outside USA)

E: proteintech@ptglab.com

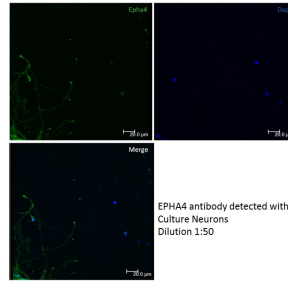
W: ptglab.com

This product is exclusively available under Proteintech Group brand and is not available to purchase from any other manufacturer.

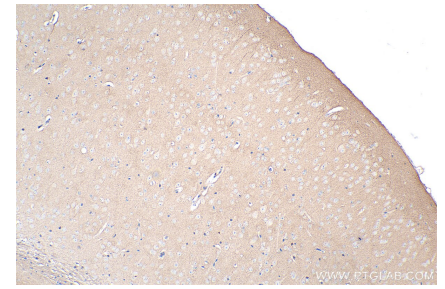
Données de validation sélectionnées



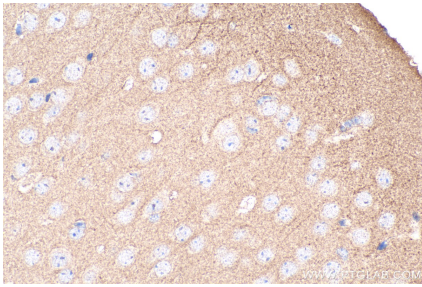
Various lysates were subjected to SDS PAGE followed by western blot with 21875-1-AP (EphA4 antibody) at dilution of 1:1000 incubated at room temperature for 1.5 hours.



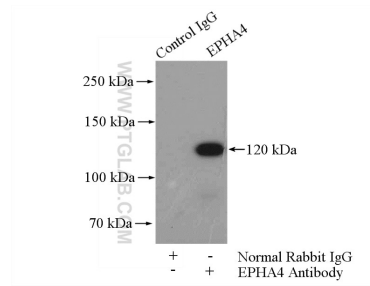
IF result of EphA4 antibody (21875-1-AP, 1:50) with culture neuron cells by Wilson Pak Kin Lou.



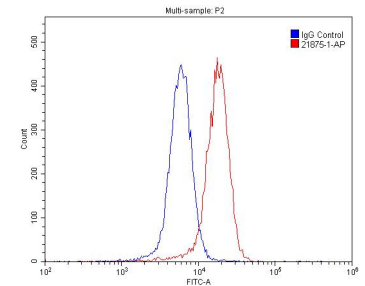
Immunohistochemical analysis of paraffin-embedded mouse brain tissue slide using 21875-1-AP (EphA4 antibody) at dilution of 1:2000 (under 10x lens). Heat mediated antigen retrieval with Tris-EDTA buffer (pH 9.0).



Immunohistochemical analysis of paraffin-embedded mouse brain tissue slide using 21875-1-AP (EphA4 antibody) at dilution of 1:2000 (under 40x lens). Heat mediated antigen retrieval with Tris-EDTA buffer (pH 9.0).



IP Result of anti-EphA4 (IP:21875-1-AP, 4ug; Detection:21875-1-AP 1:1000) with mouse brain tissue lysate 4000ug.



1×10^6 SH-SY5Y cells were stained with 0.2ug EphA4 antibody (21875-1-AP, red) and control antibody (blue). Fixed with 4% PFA blocked with 3% BSA (30 min). Alexa Fluor 488-conjugated AffiniPure Goat Anti-Rabbit IgG(H+L) with dilution 1:1500.