

À des fins de recherche uniquement

# Anticorps Polyclonal de lapin anti-PI3 Kinase p110 Alpha



Numéro de catalogue: 21890-1-AP

18 Publications

## Informations de base

Numéro de catalogue:

21890-1-AP

Taille:

150ul, Concentration: 240 µg/ml by Bradford method using BSA as the standard;

Hôte:

Lapin

Isotype:

IgG

Immunogen Catalog Number:

AG16586

Numéro d'acquisition GenBank:

BC113601

Identification du gène (NCBI):

5290

Nom complet:

phosphoinositide-3-kinase, catalytic, alpha polypeptide

MW calculé

1068 aa, 124 kDa

MW observés:

110 kDa

Méthode de purification:

Purification par affinité contre l'antigène

Dilutions recommandées:

WB 1:500-1:3000

IP 0.5-4.0 µg for IP and 1:200-1:1000 for WB

IHC 1:100-1:400

IF 1:50-1:500

## Applications

Applications testées:

FC, IF, IHC, IP, WB, ELISA

Demandes citées:

IHC, WB

Spécificité de l'espèce:

Humain, rat, souris

Espèces citées:

Humain, rat, souris

**Remarque-IHC: il est suggéré de démasquer l'antigène avec un tampon de TE buffer pH 9,0; (\*) A défaut, 'le démasquage de l'antigène peut être effectué avec un tampon citrate pH 6,0.**

Contrôles positifs:

WB : tissu cérébral humain, cellules Jurkat

IP : tissu cardiaque de souris,

IHC : tissu de cancer du poumon humain, tissu de cancer du sein humain

IF : cellules MCF-7,

## Informations générales

PIK3CA belongs to the PI3/PI4-kinase family. It phosphorylates PtdIns, PtdIns4P and PtdIns(4,5)P2 with a preference for PtdIns(4,5)P2. Defects in PIK3CA are associated with colorectal cancer (CRC). Defects in PIK3CA are associated with breast cancer. Defects in PIK3CA are associated with ovarian cancer. Defects in PIK3CA may underlie hepatocellular carcinoma (HCC). Defects in PIK3CA are a cause of keratosis seborrheic (KERSEB).

## Publications notables

Autrice	Pubmed ID	Journal	Application
Koichi Baba	28894280	Sci Rep	WB
Binwu Hu	28932123	Onco Targets Ther	WB
Li Jia	29030743	Dig Dis Sci	WB

## Stockage

Stockage:

Stocker à -20°C. Stable pendant un an après l'expédition.

Tampon de stockage:

PBS avec azoture de sodium à 0,02 % et glycérol à 50 % pH 7,3

L'aliquotage n'est pas nécessaire pour le stockage à -20C

\*\*\* Les 20ul contiennent 0,1% de BSA.

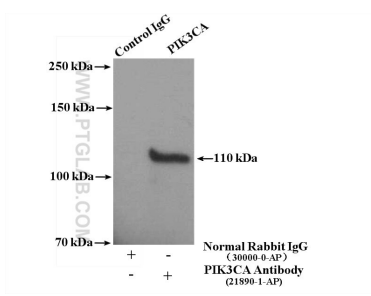
For technical support and original validation data for this product please contact:

T: 1 (888) 4PTGLAB (1-888-478-4522) (toll free in USA), or 1(312) 455-8498 (outside USA)

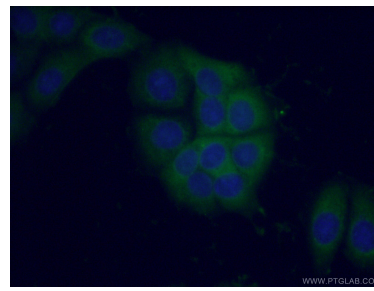
E: proteintech@ptglab.com  
W: ptglab.com

This product is exclusively available under Proteintech Group brand and is not available to purchase from any other manufacturer.

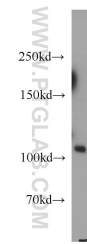
## Données de validation sélectionnées



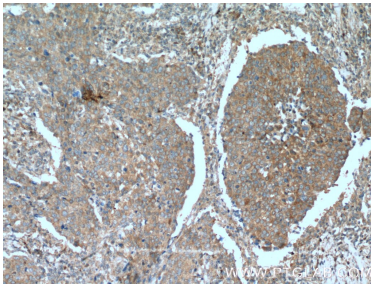
IP result of anti-PI3K p110 (alpha) (IP:21890-1-AP, 4ug; Detection:21890-1-AP 1:300) with mouse heart tissue lysate 3600 ug.



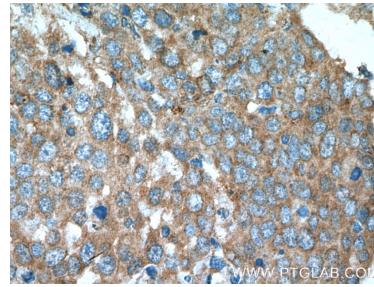
Immunofluorescent analysis of (-20°C Ethanol) fixed MCF-7 cells using 21890-1-AP (PI3K p110(alpha) antibody) at dilution of 1:50 and Alexa Fluor 488-conjugated AffiniPure Goat Anti-Rabbit IgG(H+L).



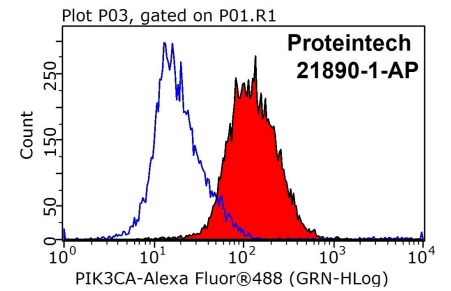
human brain tissue were subjected to SDS PAGE followed by western blot with 21890-1-AP (PI3K p110(alpha) antibody) at dilution of 1:1000 incubated at room temperature for 1.5 hours.



Immunohistochemical analysis of paraffin-embedded human lung cancer tissue slide using 21890-1-AP (PI3K p110(alpha) antibody) at dilution of 1:200 (under 10x lens). Heat mediated antigen retrieval with Tris-EDTA buffer (pH 9.0).



Immunohistochemical analysis of paraffin-embedded human lung cancer tissue slide using 21890-1-AP (PI3K p110(alpha) antibody) at dilution of 1:200 (under 40x lens). Heat mediated antigen retrieval with Tris-EDTA buffer (pH 9.0).



1X10<sup>6</sup> Jurkat cells were stained with 0.5ug PI3K p110(alpha) antibody (21890-1-AP, red) and control antibody (blue). Fixed with 90% MeOH blocked with 3% BSA (30 min). Alexa Fluor 488-conjugated AffiniPure Goat Anti-Rabbit IgG(H+L) with dilution 1:1000.