

À des fins de recherche uniquement

Anticorps Polyclonal de lapin anti-DELE1



Numéro de catalogue: 21904-1-AP

2 Publications

Informations de base

Numéro de catalogue:

21904-1-AP

Taille:

150ul, Concentration: 1000 µg/ml by Nanodrop and 360 µg/ml by Bradford method using BSA as the standard;

Hôte:

Lapin

Isotype:

IgG

Immunogen Catalog Number:

AG14615

Numéro d'acquisition GenBank:

BC007855

Identification du gène (NCBI):

9812

Nom complet:

KIAA0141

MW calculé

515 aa, 56 kDa

MW observés:

56 kDa

Méthode de purification:

Purification par affinité contre l'antigène

Dilutions recommandées:

WB 1:200-1:1000

Applications

Applications testées:

WB, ELISA

Demandes citées:

WB

Spécificité de l'espèce:

Humain, souris

Espèces citées:

souris

Contrôles positifs:

WB : tissu pulmonaire de souris,

Informations générales

DELE1, also known as KIAA0141, is a 515 amino acid protein, which localizes in Mitochondrion and is detected in liver, skeletal muscle, kidney, pancreas, spleen, thyroid, testis, ovary, small intestine and colon. DELE1 is essential for the induction of death receptor-mediated apoptosis through the regulation of caspase activation. Mitochondrial malfunction needs to be relayed to the cytosol, where an integrated stress response is triggered by the phosphorylation of eukaryotic translation initiation factor 2α (eIF2α) in mammalian cells. eIF2α phosphorylation is mediated by the four eIF2α kinases GCN2, HRI, PERK and PKR, which are activated by diverse types of cellular stress. OMA1, a mitochondrial stress-activated protease; and DELE1, a little-characterized protein that we found was associated with the inner mitochondrial membrane. Mitochondrial stress stimulates OMA1-dependent cleavage of DELE1 and leads to the accumulation of DELE1 in the cytosol, where it interacts with HRI and activates the eIF2α kinase activity of HRI. In addition, DELE1 is required for ATF4 translation downstream of eIF2α phosphorylation.

Publications notables

Autrice	Pubmed ID	Journal	Application
Jiahui Tang	36290724	Antioxidants (Basel)	WB
Xiaoyan Guo	32132707	Nature	WB

Stockage

Stockage:

Stocker à -20°C. Stable pendant un an après l'expédition.

Tampon de stockage:

PBS avec azoture de sodium à 0,02 % et glycérol à 50 % pH 7,3

L'aliquotage n'est pas nécessaire pour le stockage à -20°C

*** Les 20ul contiennent 0,1% de BSA.

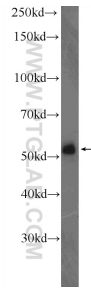
For technical support and original validation data for this product please contact:

T: 1 (888) 4PTGLAB (1-888-478-4522) (toll free in USA), or 1(312) 455-8498 (outside USA)

E: proteintech@ptglab.com
W: ptglab.com

This product is exclusively available under Proteintech Group brand and is not available to purchase from any other manufacturer.

Données de validation sélectionnées



mouse lung tissue were subjected to SDS PAGE followed by western blot with 21904-1-AP (KIAA0141 Antibody) at dilution of 1:300 incubated at room temperature for 1.5 hours.