

À des fins de recherche uniquement

Anticorps Polyclonal de lapin anti-ONECUT2



Numéro de catalogue: 21916-1-AP

Phare

10 Publications

Informations de base

Numéro de catalogue:

21916-1-AP

Taille:

150ul, Concentration: 600 µg/ml by Nanodrop;

Hôte:

Lapin

Isotype:

IgG

Immunogen Catalog Number:

AG16162

Numéro d'acquisition GenBank:

BC108925

Identification du gène (NCBI):

9480

Nom complet:

one cut homeobox 2

MW calculé

504 aa, 54 kDa

MW observés:

54-60 kDa

Méthode de purification:

Purification par affinité contre l'antigène

Dilutions recommandées:

WB 1:1000-1:4000

IP 0.5-4.0 ug for IP and 1:200-1:1000 for WB

Applications

Applications testées:

IP, WB, ELISA

Demandes citées:

Cell treatment, ChIP, IHC, WB

Spécificité de l'espèce:

Humain, souris

Espèces citées:

Humain, rat, souris

Contrôles positifs:

WB : cellules HeLa, cellules A549, cellules HEK-293, cellules HepG2, cellules Jurkat, tissu cutané de souris

IP : cellules HEK-293,

Informations générales

ONECUT2, also named as One cut domain family member 2 or Hepatocyte nuclear factor 6-beta, is a 504 amino acid protein, which contains one CUT DNA-binding domain and one homeobox DNA-binding domain. ONECUT2 belongs to the CUT homeobox family and activates the transcription of a number of liver genes such as HNF3B. ONECUT2 is required for liver differentiation and metabolism. ONECUT2 and ONECUT3 play redundant roles with ONECUT1 in pancreas development.

Publications notables

Autrice	Pubmed ID	Journal	Application
Yangfei Yi	36178080	Orthop Surg	WB
Danfei Liu	34839358	Cell Death Dis	WB, ChIP
Mirja Rotinen	30478421	Nat Med	WB

Stockage

Stockage:

Stocker à -20°C. Stable pendant un an après l'expédition.

Tampon de stockage:

PBS avec azoture de sodium à 0,02 % et glycérol à 50 % pH 7,3

L'aliquotage n'est pas nécessaire pour le stockage à -20C

*** Les 20ul contiennent 0,1% de BSA.

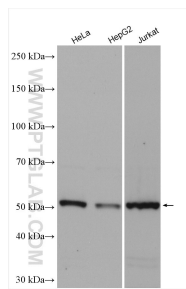
For technical support and original validation data for this product please contact:

T: 1 (888) 4PTGLAB (1-888-478-4522) (toll free in USA), or 1(312) 455-8498 (outside USA)

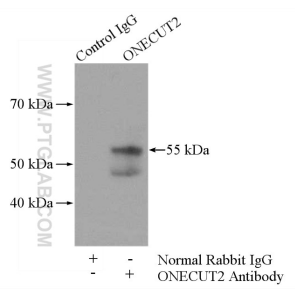
E: proteintech@ptglab.com
W: ptglab.com

This product is exclusively available under Proteintech Group brand and is not available to purchase from any other manufacturer.

Données de validation sélectionnées



Various lysates were subjected to SDS PAGE followed by western blot with 21916-1-AP (ONECUT2 antibody) at dilution of 1:2000 incubated at room temperature for 1.5 hours.



IP Result of anti-ONECUT2 (IP:21916-1-AP, 4ug; Detection:21916-1-AP 1:300) with HEK-293 cells lysate 3200ug.