

À des fins de recherche uniquement

Anticorps Polyclonal de lapin anti-SP1



Numéro de catalogue: 21962-1-AP

Phare

81 Publications

Informations de base

Numéro de catalogue:

21962-1-AP

Taille:

150ul, Concentration: 700 µg/ml by Nanodrop;

Hôte:

Lapin

Isotype:

IgG

Immunogen Catalog Number:

AG16720

Numéro d'acquisition GenBank:

BC062539

Identification du gène (NCBI):

6667

Nom complet:

Sp1 transcription factor

MW calculé

785 aa, 81 kDa

MW observés:

95-106 kDa

Méthode de purification:

Purification par affinité contre l'antigène

Dilutions recommandées:

WB 1:2000-1:16000

IP 0.5-4.0 µg for IP and 1:500-1:1000 for WB

IHC 1:50-1:500

IF 1:20-1:200

Applications

Applications testées:

IF, IHC, IP, WB, ELISA

Demandes citées:

ChIP, CoIP, IF, IHC, IP, WB

Spécificité de l'espèce:

Humain, rat, singe, souris

Espèces citées:

Humain, porc, rat, singe, souris

Contrôles positifs:

WB: cellules Jurkat, cellules A431, cellules HEK-293, cellules HeLa, cellules K-562

IP: cellules A431,

IHC: tissu de cancer du poumon humain, tissu de cancer de l'estomac humain, tissu de côlon humain

IF: cellules HeLa,

Remarque-IHC: il est suggéré de démasquer l'antigène avec un tampon de TE buffer pH 9,0; (*) À défaut, le démasquage de l'antigène peut être effectué avec un tampon citrate pH 6,0.

Informations générales

The transcription factor Sp1 is a C2H2 zinc-finger protein that is involved in the regulation of a wide variety of genes, including housekeeping genes and tumor-developing genes. It is associated with tumor development, growth, and metastasis [PMID: 16209919]. It regulates the expression of a large number of genes involved in a variety of processes such as cell growth, apoptosis, differentiation and immune responses. Besides, it has a role in modulating the cellular response to DNA damage, recruiting SMARCA4/BRG1 on the c-FOS promoter, regulation of FE65 gene expression [PMID:11371615,16332679]. SP1 is detected with MW 95-105 kDa and 65 kDa in this paper (PMID: 10618488).

Publications notables

Autrice	Pubmed ID	Journal	Application
Yongchun Yu	36183674	Transl Oncol	WB, ChIP
Faisal Aziz	26427350	Toxicol In Vitro	WB, IHC
Peng Duan	34794910	Sci Total Environ	WB, CoIP

Stockage

Stockage:

Stocker à -20°C. Stable pendant un an après l'expédition.

Tampon de stockage:

PBS avec azoture de sodium à 0,02 % et glycérol à 50 % pH 7,3

L'aliquotage n'est pas nécessaire pour le stockage à -20C

*** Les 20ul contiennent 0,1% de BSA.

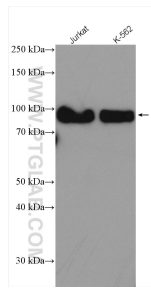
For technical support and original validation data for this product please contact:

T: 1 (888) 4PTGLAB (1-888-478-4522) (toll free in USA), or 1(312) 455-8498 (outside USA)

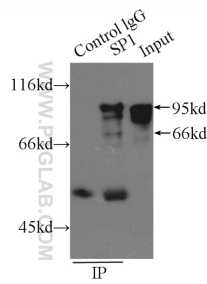
E: proteintech@ptglab.com
W: ptglab.com

This product is exclusively available under Proteintech Group brand and is not available to purchase from any other manufacturer.

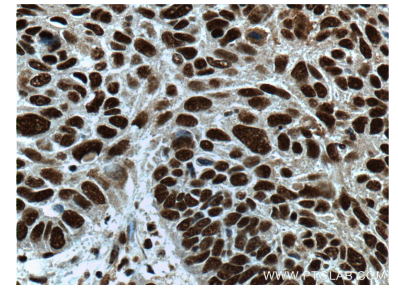
Données de validation sélectionnées



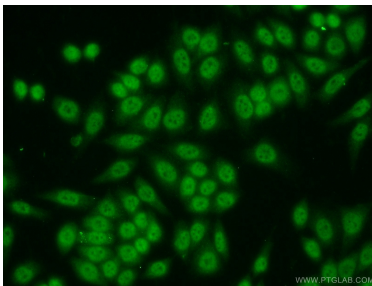
Various lysates were subjected to SDS PAGE followed by western blot with 21962-1-AP (SP1 antibody) at dilution of 1:8000 incubated at room temperature for 1.5 hours.



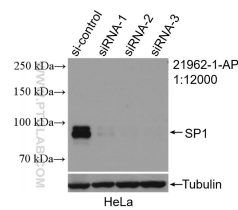
IP Result of anti-SP1 (IP:21962-1-AP, 6ug; Detection:21962-1-AP 1:500) with A431 cells lysate 2500ug.



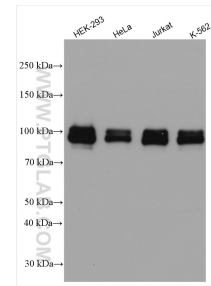
Immunohistochemical analysis of paraffin-embedded human lung cancer tissue slide using 21962-1-AP (SP1 Antibody) at dilution of 1:200 (under 40x lens).



Immunofluorescent analysis of HeLa cells using 21962-1-AP (SP1 antibody) at dilution of 1:50 and Alexa Fluor 488-conjugated AffiniPure Goat Anti-Rabbit IgG(H+L).



WB result of SP1 antibody (21962-1-AP; 1:12000; incubated at room temperature for 1.5 hours) with sh-Control and sh-SP1 transfected HeLa cells.



Various lysates were subjected to SDS PAGE followed by western blot with 21962-1-AP (SP1 antibody) at dilution of 1:8000 incubated at room temperature for 1.5 hours.