

À des fins de recherche uniquement

# Anticorps Polyclonal de lapin anti-GFRA2



Numéro de catalogue: 21973-1-AP

2 Publications

## Informations de base

<b>Numéro de catalogue:</b> 21973-1-AP	<b>Numéro d'acquisition GenBank:</b> BC041688	<b>Méthode de purification:</b> Purification par affinité contre l'antigène
<b>Taille:</b> 150ul , Concentration: 650 µg/ml by Nanodrop and 393 µg/ml by Bradford method using BSA as the standard;	<b>Identification du gène (NCBI):</b> 2675	<b>Dilutions recommandées:</b> WB 1:500-1:2000 IHC 1:20-1:200
<b>Hôte:</b> Lapin	<b>Nom complet:</b> GDNF family receptor alpha 2	
<b>Isotype:</b> IgG	<b>MW calculé</b> 464 aa, 52 kDa	
<b>Immunogen Catalog Number:</b> AG16893	<b>MW observés:</b> 34-40 kDa, 50-55 kDa	

## Applications

<b>Applications testées:</b> IHC, WB, ELISA	<b>Contrôles positifs:</b> WB : cellules HepG2, multi-cellules/tissus IHC : tissu hépatique humain,
<b>Demandes citées:</b> IHC, WB	
<b>Spécificité de l'espèce:</b> Humain, souris	
<b>Espèces citées:</b> Humain, rat	

**Remarque-IHC: il est suggéré de démasquer l'antigène avec un tampon de TE buffer pH 9,0; (\*) A défaut, 'le démasquage de l'antigène peut être 'effectué avec un tampon citrate pH 6,0.**

## Informations générales

GFRA2, also named as GDNFRB, RETL2 and TRNR2, belongs to the GDNFR family. It is a receptor for neurturin. GFRA2 mediates the NRTN-induced autophosphorylation and activation of the RET receptor. It is a potent survival factor for central dopaminergic neurons, motor neurons, and several other populations of neurons in the central and peripheral nervous systems. The GDNF signal is mediated by a complex of the receptor tyrosine kinase RET and a glycosylphosphatidylinositol (GPI)-linked protein, GDNFRA. GFRA2 has three isoforms with MW 34-36 kDa, 39-41 kDa and 50-55 kDa. This antibody recognizes all the three isoforms.

## Publications notables

Autrice	Pubmed ID	Journal	Application
Guo-Qing Wang	31210367	Biotechnol Appl Biochem	WB
Jiangning Gu	27400681	Cancer Lett	IHC

## Stockage

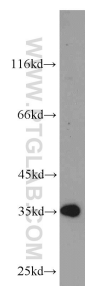
**Stockage:**  
Stocker à -20°C. Stable pendant un an après l'expédition.  
**Tampon de stockage:**  
PBS avec azoture de sodium à 0,02 % et glycérol à 50 % pH 7,3  
L'aliquotage n'est pas nécessaire pour le stockage à -20C

\*\*\* Les 20ul contiennent 0,1% de BSA.

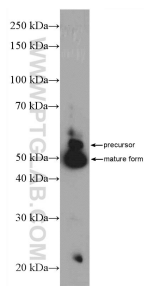
For technical support and original validation data for this product please contact:  
T: 1 (888) 4PTGLAB (1-888-478-4522) (toll free in USA), or 1(312) 455-8498 (outside USA)  
E: proteintech@ptglab.com  
W: ptglab.com

This product is exclusively available under Proteintech Group brand and is not available to purchase from any other manufacturer.

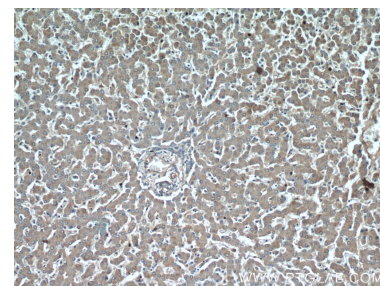
## Données de validation sélectionnées



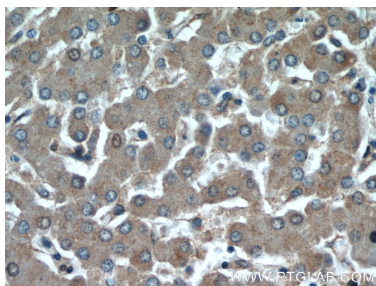
HepG2 cells were subjected to SDS PAGE followed by western blot with 21973-1-AP (GFRA2 antibody) at dilution of 1:1000 incubated at room temperature for 1.5 hours.



mouse brain tissue were subjected to SDS PAGE followed by western blot with 21973-1-AP (GFRA2 Antibody) at dilution of 1:600 incubated at room temperature for 1.5 hours.



Immunohistochemical analysis of paraffin-embedded human liver using 21973-1-AP (GFRA2 antibody) at dilution of 1:50 (under 10x lens).



Immunohistochemical analysis of paraffin-embedded human liver using 21973-1-AP (GFRA2 antibody) at dilution of 1:50 (under 40x lens).