

À des fins de recherche uniquement

Anticorps Polyclonal de lapin anti-ROM1



Numéro de catalogue: 21984-1-AP

8 Publications

Informations de base

Numéro de catalogue:

21984-1-AP

Taille:

150ul, Concentration: 300 µg/ml by Nanodrop and 220 µg/ml by Bradford method using BSA as the standard;

Hôte:

Lapin

Isotype:

IgG

Immunogen Catalog Number:

AG17049

Numéro d'acquisition GenBank:

BC008100

Identification du gène (NCBI):

6094

Nom complet:

retinal outer segment membrane protein 1

MW calculé

351 aa, 37 kDa

MW observés:

37-45 kDa

Méthode de purification:

Purification par affinité contre l'antigène

Dilutions recommandées:

WB 1:500-1:3000

IF 1:20-1:200

Applications

Applications testées:

IF, WB, ELISA

Demandes citées:

IF, IHC, WB

Spécificité de l'espèce:

Humain, rat, souris

Espèces citées:

Humain, souris

Contrôles positifs:

WB : tissu oculaire de souris, cellules HeLa, tissu oculaire de rat

IF : cellules HeLa,

Informations générales

ROM1 (also known as TSPAN23) is a transmembrane protein present in photoreceptor outer segment disc membranes. ROM1 belongs to the tetraspanin superfamily, which are characterized by the presence of four conserved transmembrane regions. Tetraspanins have been involved in diverse processes such as cell activation and proliferation, adhesion and motility, differentiation, and cancer. ROM1 is required for rod photoreceptor viability and the regulation of disk morphogenesis (PMID: 10802659). It may function as an adhesion molecule involved in stabilization and compaction of outer segment disks.

Publications notables

Autrice	Pubmed ID	Journal	Application
Poppy Datta	31694913	J Biol Chem	WB, IF
Poppy Datta	33961633	PLoS One	WB, IHC
Poppy Datta	26216965	Proc Natl Acad Sci U S A	WB, IF

Stockage

Stockage:

Stocker à -20°C. Stable pendant un an après l'expédition.

Tampon de stockage:

PBS avec azoture de sodium à 0,02 % et glycérol à 50 % pH 7,3

L'aliquotage n'est pas nécessaire pour le stockage à -20C

*** Les 20ul contiennent 0,1% de BSA.

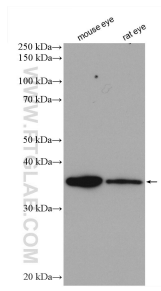
For technical support and original validation data for this product please contact:

T: 1 (888) 4PTGLAB (1-888-478-4522) (toll free in USA), or 1(312) 455-8498 (outside USA)

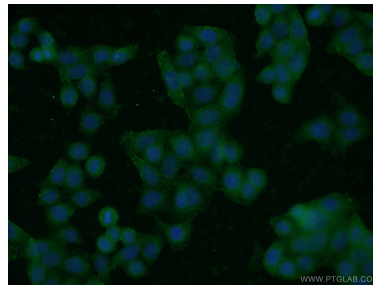
E: proteintech@ptglab.com
W: ptglab.com

This product is exclusively available under Proteintech Group brand and is not available to purchase from any other manufacturer.

Données de validation sélectionnées



Various lysates were subjected to SDS PAGE followed by western blot with 21984-1-AP (ROM1 antibody) at dilution of 1:1500 incubated at room temperature for 1.5 hours.



Immunofluorescent analysis of HeLa cells using 21984-1-AP (ROM1 antibody) at dilution of 1:50 and Alexa Fluor 488-conjugated AffiniPure Goat Anti-Rabbit IgG(H+L).