

À des fins de recherche uniquement

# Anticorps Polyclonal de lapin anti-Annexin A1



Numéro de catalogue: 21990-1-AP

Phare

27 Publications

## Informations de base

Numéro de catalogue:

21990-1-AP

Taille:

150ul, Concentration: 600 µg/ml by Nanodrop;

Hôte:

Lapin

Isotype:

IgG

Immunogen Catalog Number:

AG17273

Numéro d'acquisition GenBank:

BC001275

Identification du gène (NCBI):

301

Nom complet:

annexin A1

MW calculé

346 aa, 39 kDa

MW observés:

37 kDa

Méthode de purification:

Purification par affinité contre l'antigène

Dilutions recommandées:

WB 1:5000-1:50000

IP 0.5-4.0 µg for IP and 1:1000-1:4000 for WB

IHC 1:50-1:500

IF 1:200-1:800

## Applications

Applications testées:

FC, IF, IHC, IP, WB, ELISA

Demandes citées:

IF, IHC, IP, WB

Spécificité de l'espèce:

Humain, rat, souris

Espèces citées:

bovin, Humain, rat, souris

**Remarque-IHC: il est suggéré de démasquer l'antigène avec un tampon de TE buffer pH 9,0; (\*) À défaut, le démasquage de l'antigène peut être effectué avec un tampon citrate pH 6,0.**

Contrôles positifs:

WB : cellules A431, cellules A549, cellules C6, cellules HeLa, cellules HepG2, cellules K-562, cellules MCF-7, cellules MDA-MB-453s, cellules NIH/3T3, cellules U-937, multi-cellules

IP : cellules HeLa,

IHC : tissu œsophagien humain, tissu de tumeur ovarienne humain, tissu d'intestin grêle humain, tissu pulmonaire humain, tissu rénal humain

IF : cellules A549, cellules A431

## Informations générales

ANXA1, also named as ANX1, LPC1 and p35, belongs to the annexin family. It is a member of the annexin family of Ca<sup>2+</sup>-binding and phospholipidbinding proteins, and it is particularly abundant in various populations of peripheral blood leukocytes. ANXA1 regulates phospholipase A2 activity. It seems to bind from two to four calcium ions with high affinity. ANXA1 is a pleiotrophic protein produced by many cell types including peripheral blood leukocytes.

## Publications notables

Autrice	Pubmed ID	Journal	Application
Chuiming Jia	30292410	Biochem Biophys Res Commun	WB,IHC
Manhui Zhu	34595678	Inflammation	WB
Lin Yuan	34781202	Biochem Biophys Res Commun	WB

## Stockage

Stockage:

Stocker à -20°C. Stable pendant un an après l'expédition.

Tampon de stockage:

PBS avec azoture de sodium à 0,02 % et glycérol à 50 % pH 7,3

L'aliquotage n'est pas nécessaire pour le stockage à -20C

\*\*\* Les 20ul contiennent 0,1% de BSA.

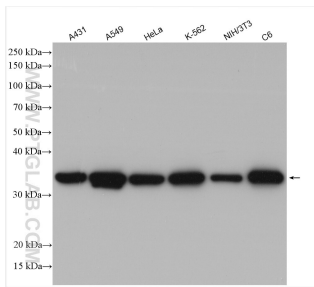
For technical support and original validation data for this product please contact:

T: 1 (888) 4PTGLAB (1-888-478-4522) (toll free in USA), or 1(312) 455-8498 (outside USA)

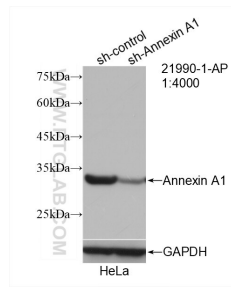
E: proteintech@ptglab.com  
W: ptglab.com

This product is exclusively available under Proteintech Group brand and is not available to purchase from any other manufacturer.

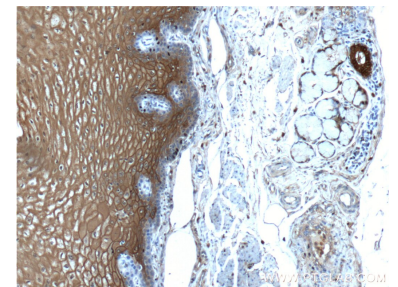
## Données de validation sélectionnées



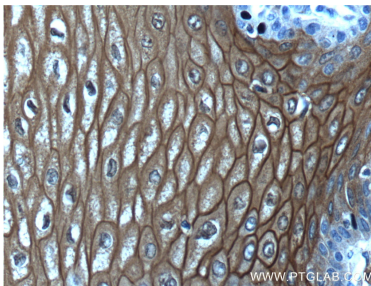
Various lysates were subjected to SDS PAGE followed by western blot with 21990-1-AP (Annexin A1 antibody) at dilution of 1:25000 incubated at room temperature for 1.5 hours.



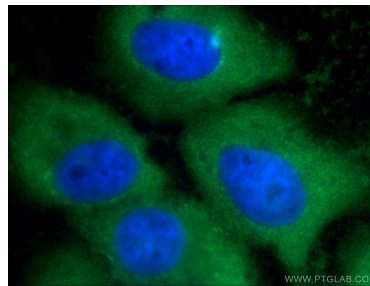
WB result of Annexin A1 antibody (21990-1-AP; 1:4000; incubated at room temperature for 1.5 hours) with sh-Control and sh-Annexin A1 transfected HeLa cells.



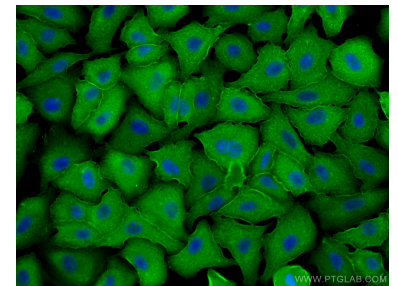
Immunohistochemical analysis of paraffin-embedded human oesophagus tissue slide using 21990-1-AP (Annexin A1 antibody at dilution of 1:200 (under 10x lens).



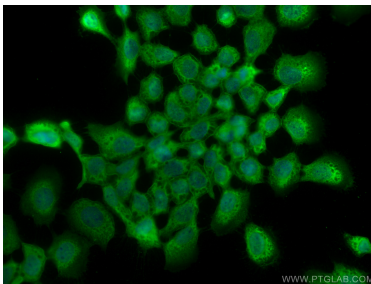
Immunohistochemical analysis of paraffin-embedded human oesophagus tissue slide using 21990-1-AP (Annexin A1 antibody at dilution of 1:200 (under 40x lens).



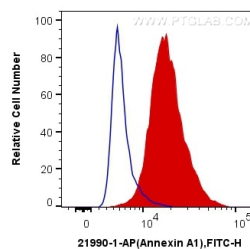
Immunofluorescent analysis of A431 cells using 21990-1-AP (Annexin A1 antibody) at dilution of 1:100 and Alexa Fluor 488-conjugated AffiniPure Goat Anti-Rabbit IgG(H+L).



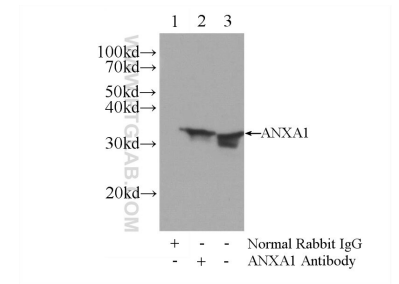
Immunofluorescent analysis of (-20°C Methanol) fixed A549 cells using Annexin A1 antibody (21990-1-AP) at dilution of 1:400 and CoraLite@488-Conjugated AffiniPure Goat Anti-Rabbit IgG(H+L).



Immunofluorescent analysis of (-20°C Methanol) fixed A431 cells using Annexin A1 antibody (21990-1-AP) at dilution of 1:400 and CoraLite@488-Conjugated AffiniPure Goat Anti-Rabbit IgG(H+L).



$1 \times 10^6$  NIH/3T3 cells were intracellularly stained with 0.2 ug Anti-Human Annexin A1 (21990-1-AP) and CoraLite@488-Conjugated AffiniPure Goat Anti-Rabbit IgG(H+L) at dilution 1:1000 (red), or 0.2 ug Control Antibody. Cells were fixed with 4% PFA and permeabilized with Flow Cytometry Perm Buffer (PF00011-C).



IP Result of anti-Annexin A1 (IP:21990-1-AP, 3ug; Detection:21990-1-AP 1:2000) with HeLa cells lysate 2400ug.