

À des fins de recherche uniquement

Anticorps Polyclonal de lapin anti- PKC Alpha



Numéro de catalogue: 21991-1-AP

Phare

38 Publications

Informations de base

Numéro de catalogue:

21991-1-AP

Taille:

150ul, Concentration: 600 µg/ml by Nanodrop;

Hôte:

Lapin

Isotype:

IgG

Immunogen Catalog Number:

AG17275

Numéro d'acquisition GenBank:

AK055431

Identification du gène (NCBI):

5578

Nom complet:

protein kinase C, alpha

MW calculé

77 kDa

MW observés:

77 kDa

Méthode de purification:

Purification par affinité contre l'antigène

Dilutions recommandées:

WB 1:500-1:2000

IP 0.5-4.0 ug for IP and 1:500-1:2000 for WB

IHC 1:20-1:200

IF 1:50-1:500

Applications

Applications testées:

FC, IF, IHC, IP, WB, ELISA

Demandes citées:

IF, IHC, WB

Spécificité de l'espèce:

Humain, rat, souris

Espèces citées:

Humain, porc, rat, singe, souris

Remarque-IHC: il est suggéré de démasquer l'antigène avec un tampon de TE buffer pH 9,0; (*) À défaut, le démasquage de l'antigène peut être effectué avec un tampon citrate pH 6,0.

Contrôles positifs:

WB : cellules Jurkat, cellules HEK-293, cellules HeLa, cellules NIH/3T3, plaquettes de sang périphérique humain, tissu rénal de rat

IP : cellules NIH/3T3,

IHC : tissu de cancer de la thyroïde humaine, tissu cérébral de souris

IF : cellules HeLa, cellules NIH/3T3

Informations générales

Protein kinase C (PKC) is a family of serine- and threonine-specific protein kinases that can be activated by calcium and the second messenger diacylglycerol. PKC family members phosphorylate a wide variety of protein targets and are known to be involved in diverse cellular signaling pathways. PKC family members also serve as major receptors for phorbol esters, a class of tumor promoters. Each member of the PKC family has a specific expression profile and is believed to play a distinct role in cells. PRKCA is one of the PKC family members. This kinase has been reported to play roles in many different cellular processes, such as cell adhesion, cell transformation, cell cycle checkpoint, and cell volume control. Knockout studies in mice suggest that this kinase may be a fundamental regulator of cardiac contractility and Ca(2+) handling in myocytes.

Publications notables

Autrice	Pubmed ID	Journal	Application
Lianhong Yin	29033837	Front Pharmacol	WB
Chunming Gu	36109490	Oncogenesis	WB
Honghong Jiang	31612005	Oncol Lett	IHC

Stockage

Stockage:

Stocker à -20°C. Stable pendant un an après l'expédition.

Tampon de stockage:

PBS avec azoture de sodium à 0,02 % et glycérol à 50 % pH 7,3

L'aliquotage n'est pas nécessaire pour le stockage à -20C

*** Les 20ul contiennent 0,1% de BSA.

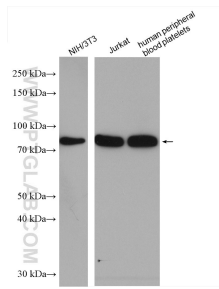
For technical support and original validation data for this product please contact:

T: 1 (888) 4PTGLAB (1-888-478-4522) (toll free in USA), or 1(312) 455-8498 (outside USA)

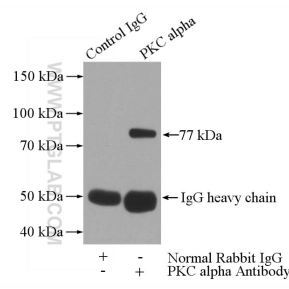
E: proteintech@ptglab.com
W: ptglab.com

This product is exclusively available under Proteintech Group brand and is not available to purchase from any other manufacturer.

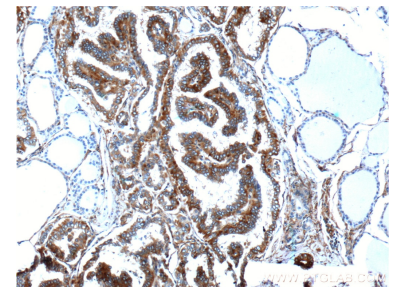
Données de validation sélectionnées



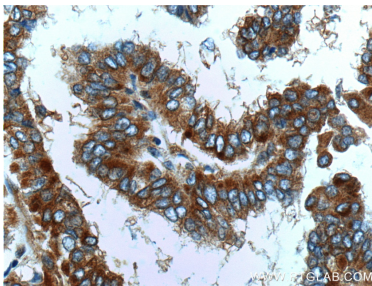
Various lysates were subjected to SDS PAGE followed by western blot with 21991-1-AP (PKC alpha antibody) at dilution of 1:1000 incubated at room temperature for 1.5 hours.



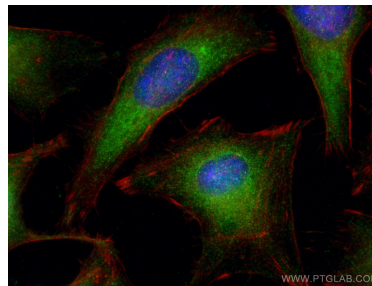
IP Result of anti-PKC alpha (IP:21991-1-AP, 4ug; Detection:21991-1-AP 1:1000) with NIH/3T3 cells lysate 1600ug.



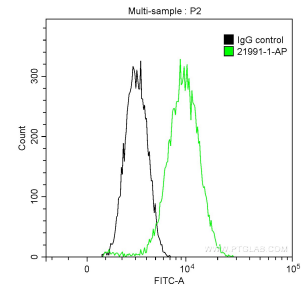
Immunohistochemical analysis of paraffin-embedded human thyroid cancer tissue slide using 21991-1-AP (PKC alpha antibody at dilution of 1:200 (under 10x lens)).



Immunohistochemical analysis of paraffin-embedded human thyroid cancer tissue slide using 21991-1-AP (PKC alpha antibody at dilution of 1:200 (under 40x lens)).



Immunofluorescent analysis of (-20°C Ethanol) fixed HeLa cells using PKC Alpha antibody (21991-1-AP) at dilution of 1:200 and CoraLite@488-Conjugated AffiniPure Goat Anti-Rabbit IgG(H+L), CL594-Phalloidin (red).



1X10⁶ HeLa cells were intracellularly stained with 0.2 ug Anti-Human PKC Alpha (21991-1-AP) and CoraLite@488-Conjugated AffiniPure Goat Anti-Rabbit IgG(H+L) at dilution 1:1000 (green), and 0.2 ug Control Antibody. Cells were fixed with 90% MeOH.