

À des fins de recherche uniquement

Anticorps Polyclonal de lapin anti-Integrin Alpha 3



Numéro de catalogue: 21992-1-AP

Phare

2 Publications

Informations de base

Numéro de catalogue:

21992-1-AP

Taille:

150ul, Concentration: 400 µg/ml by Nanodrop and 280 µg/ml by Bradford method using BSA as the standard;

Hôte:

Lapin

Isotype:

IgG

Immunogen Catalog Number:

AG17293

Numéro d'acquisition GenBank:

BC150190

Identification du gène (NCBI):

3675

Nom complet:

integrin, alpha 3 (antigen CD49C, alpha 3 subunit of VLA-3 receptor)

MW calculé

1066 aa, 119 kDa

MW observés:

120 kDa

Méthode de purification:

Purification par affinité contre l'antigène

Dilutions recommandées:

WB 1:500-1:1000

IP 0.5-4.0 ug for IP and 1:500-1:1000 for WB

IHC 1:50-1:500

IF 1:20-1:200

Applications

Applications testées:

FC, IF, IHC, IP, WB, ELISA

Demandes citées:

IF, WB

Spécificité de l'espèce:

Humain, souris

Espèces citées:

Humain, souris

Remarque-IHC: il est suggéré de démasquer l'antigène avec un tampon de TE buffer pH 9,0; (*) A défaut, 'le démasquage de l'antigène peut être 'effectué avec un tampon citrate pH 6,0.

Contrôles positifs:

WB : cellules PC-3, cellules A549

IP : cellules PC-3,

IHC : tissu de côlon de souris,

IF : cellules A549,

Informations générales

ITGA3, also named as MSK18, CD49c, GAPB3 and FRP-2, belongs to the integrin alpha chain family. It is a receptor for fibronectin, laminin, collagen, epiligrin, thrombospondin and CSPG4. ITGA3 may mediate with LGALS3 the stimulation by CSPG4 of endothelial cells migration. ITGA3 is highly concentrated in epithelial cells where it strongly adheres to Laminin-5 and Laminin-5 induced rapid adhesion can be blocked by antibodies against the alpha-3 integrin subunit. It can be cleaved into heavy chain(840aa) and light chain(176aa). This antibody can recognize the heavy chain.

Publications notables

Autrice	Pubmed ID	Journal	Application
Eunnyung Bae	35879332	Nat Commun	WB,IF
Qiqiao Du	32117712	Front Oncol	WB

Stockage

Stockage:

Stocker à -20°C. Stable pendant un an après l'expédition.

Tampon de stockage:

PBS avec azoture de sodium à 0,02 % et glycérol à 50 % pH 7,3

L'aliquotage n'est pas nécessaire pour le stockage à -20C

*** Les 20ul contiennent 0,1% de BSA.

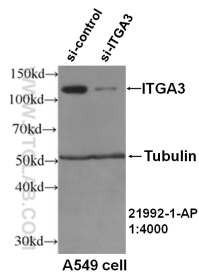
For technical support and original validation data for this product please contact:

T: 1 (888) 4PTGLAB (1-888-478-4522) (toll free in USA), or 1(312) 455-8498 (outside USA)

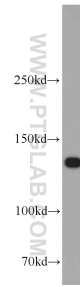
E: proteintech@ptglab.com
W: ptglab.com

This product is exclusively available under Proteintech Group brand and is not available to purchase from any other manufacturer.

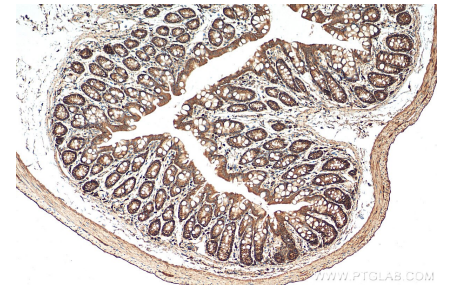
Données de validation sélectionnées



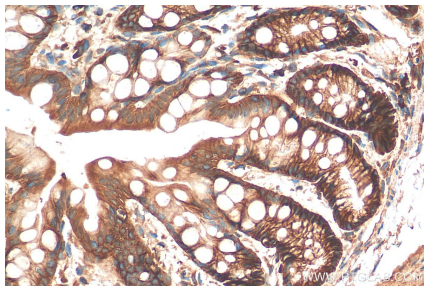
WB result of ITGA3 antibody (21992-1-AP, 1:4000) with si-control and si-ITGA3 transfected A549 cells.



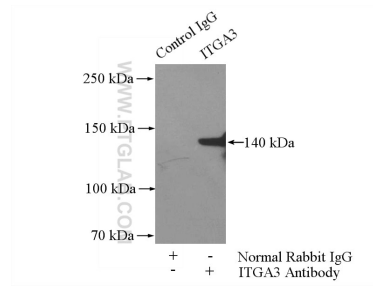
PC-3 cells were subjected to SDS PAGE followed by western blot with 21992-1-AP (ITGA3 antibody) at dilution of 1:500 incubated at room temperature for 1.5 hours.



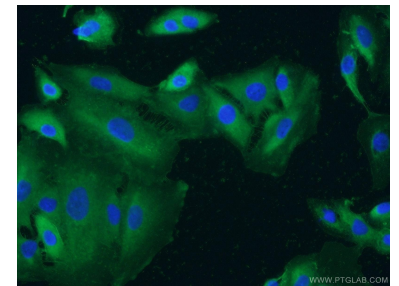
Immunohistochemical analysis of paraffin-embedded mouse colon tissue slide using 21992-1-AP (Integrin Alpha 3 antibody) at dilution of 1:200 (under 10x lens). Heat mediated antigen retrieval with Tris-EDTA buffer (pH 9.0).



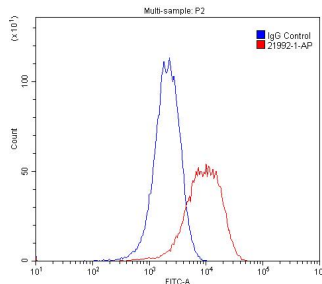
Immunohistochemical analysis of paraffin-embedded mouse colon tissue slide using 21992-1-AP (Integrin Alpha 3 antibody) at dilution of 1:200 (under 40x lens). Heat mediated antigen retrieval with Tris-EDTA buffer (pH 9.0).



IP Result of anti-Integrin alpha-3 (IP:21992-1-AP, 4ug; Detection:21992-1-AP 1:500) with PC-3 cells lysate 1200ug.



Immunofluorescent analysis of A549 cells using 21992-1-AP (Integrin alpha-3 antibody) at dilution of 1:50 and Alexa Fluor 488-conjugated AffiniPure Goat Anti-Rabbit IgG(H+L).



1X10⁶ PC-3 cells were stained with 0.2ug Integrin alpha-3 antibody (21992-1-AP, red) and control antibody (blue). Fixed with 4% PFA blocked with 3% BSA (30 min). Alexa Fluor 488-conjugated AffiniPure Goat Anti-Rabbit IgG(H+L) with dilution 1:1500.