

À des fins de recherche uniquement

Anticorps Polyclonal de lapin anti-TBP



Numéro de catalogue: 22006-1-AP

60 Publications

Informations de base

Numéro de catalogue:

22006-1-AP

Taille:

150ul, Concentration: 450 µg/ml by Nanodrop;

Hôte:

Lapin

Isotype:

IgG

Immunogen Catalog Number:

AG12383

Numéro d'acquisition GenBank:

BC110341

Identification du gène (NCBI):

6908

Nom complet:

TATA box binding protein

MW calculé

338 aa, 38 kDa

MW observés:

mouse/rat 33-36 kDa and human 37-43kDa

Méthode de purification:

Purification par affinité contre l'antigène

Dilutions recommandées:

WB 1:500-1:3000

IP 0.5-4.0 µg for IP and 1:500-1:1000 for WB

IHC 1:50-1:500

Applications

Applications testées:

IHC, IP, WB, ELISA

Demandes citées:

IF, IHC, WB

Spécificité de l'espèce:

Humain, souris

Espèces citées:

Humain, porc, rat, singe, souris

Contrôles positifs:

WB : cellules COLO 320,

IP : cellules COLO 320,

IHC : tissu de cancer du sein humain,

Remarque-IHC: il est suggéré de démasquer l'antigène avec un tampon de TE buffer pH 9,0; (*) À défaut, le démasquage de l'antigène peut être effectué avec un tampon citrate pH 6,0.

Informations générales

The TATA binding protein (TBP) is a transcription factor that binds specifically to a DNA sequence TATA box. This DNA sequence is found about 25-30 base pairs upstream of the transcription start site in some eukaryotic gene promoters. TBP, along with a variety of TBP-associated factors, make up the TFIID, a general transcription factor that in turn makes up part of the RNA polymerase II preinitiation complex. As one of the few proteins in the preinitiation complex that binds DNA in a sequence-specific manner, it helps position RNA polymerase II over the transcription start site of the gene. However, it is estimated that only 10-20% of human promoters have TATA boxes. Therefore, TBP is probably not the only protein involved in positioning RNA polymerase II. This antibody recognize human TBP with MW 40 kDa and mouse/rat Tbp with MW 34 kDa.

Publications notables

Autrice	Pubmed ID	Journal	Application
Qi Xiao	28944825	Mol Med Rep	WB
Qiu Zhong	36132230	Oxid Med Cell Longev	WB
Chang Wang	33013689	Front Endocrinol (Lausanne)	WB

Stockage

Stockage:

Stocker à -20°C. Stable pendant un an après l'expédition.

Tampon de stockage:

PBS avec azoture de sodium à 0,02 % et glycérol à 50 % pH 7,3

L'aliquotage n'est pas nécessaire pour le stockage à -20C

*** Les 20ul contiennent 0,1% de BSA.

For technical support and original validation data for this product please contact:

T: 1 (888) 4PTGLAB (1-888-478-4522) (toll free in USA), or 1(312) 455-8498 (outside USA)

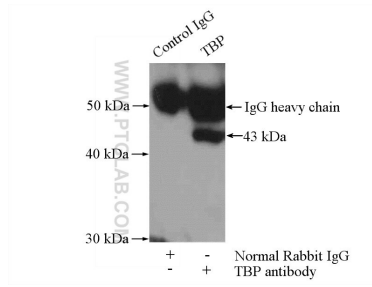
E: proteintech@ptglab.com
W: ptglab.com

This product is exclusively available under Proteintech Group brand and is not available to purchase from any other manufacturer.

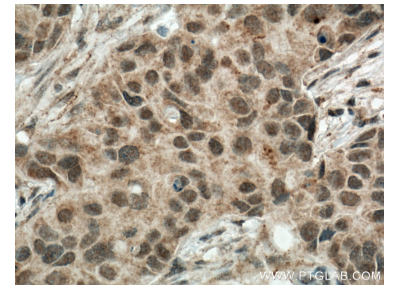
Données de validation sélectionnées



COLO 320 cells were subjected to SDS PAGE followed by western blot with 22006-1-AP (TBP antibody) at dilution of 1:1000 incubated at room temperature for 1.5 hours.



IP Result of anti-TBP (IP:22006-1-AP, 4ug; Detection:22006-1-AP 1:500) with COLO 320 cells lysate 400ug.



Immunohistochemical analysis of paraffin-embedded human breast cancer tissue slide using 22006-1-AP (TBP Antibody) at dilution of 1:200 (under 40x lens). Heat mediated antigen retrieved with Sodium Citrate buffer (pH 6.0).