

À des fins de recherche uniquement

# Anticorps Polyclonal de lapin anti-PHF20



Numéro de catalogue: 22010-1-AP

1 Publications

## Informations de base

Numéro de catalogue:

22010-1-AP

Numéro d'acquisition GenBank:

BC150178

Méthode de purification:

Purification par affinité contre l'antigène

Taille:

150ul, Concentration: 800 µg/ml by Nanodrop and 273 µg/ml by Bradford method using BSA as the standard;

Identification du gène (NCBI):

51230

Dilutions recommandées:

WB 1:500-1:2000

IF 1:50-1:500

150ul, Concentration: 800 µg/ml by Nanodrop and 273 µg/ml by Bradford method using BSA as the standard;

Nom complet:

PHD finger protein 20

Hôte:

Lapin

MW calculé

1012 aa, 115 kDa

Isotype:

IgG

MW observés:

130 kDa

Immunogen Catalog Number:

AG15686

## Applications

Applications testées:

IF, WB, ELISA

Contrôles positifs:

WB : cellules HeLa, cellules Jurkat, tissu testiculaire de souris

Demandes citées:

WB

IF : cellules HeLa,

Spécificité de l'espèce:

Humain, souris

Espèces citées:

Humain

## Informations générales

PHD finger protein 20 (PHF20), also known as NZF, TZIP, GLEA2 or HCA58, is a 1,012 amino acid protein that localizes to the nucleus and contains one PHD-type zinc finger, one C2H2-type zinc finger and one A/T hook DNA-binding domain. PHF20 contains a tudor domain, which facilitates binding to di-methylated histone H4 Lys20. PHF20 is expressed in a variety of tissues, including liver, heart, lung, pancreas, spleen, testis and placenta. PHF20 is thought to function as a transcription factor, possibly playing a role in the development of cancers, including glioblastoma, lung cancer, colon cancer and ovarian cancer. PHF20 exists as three alternatively spliced isoforms (150kd, 130kd and 120kd) which are encoded by a gene that maps to human chromosome 20 (22072714).

## Publications notables

Autrice	Pubmed ID	Journal	Application
Quan Jin	35039981	Biochem Genet	WB

## Stockage

Stockage:

Stocker à -20°C. Stable pendant un an après l'expédition.

Tampon de stockage:

PBS avec azoture de sodium à 0,02 % et glycérol à 50 % pH 7,3

L'aliquotage n'est pas nécessaire pour le stockage à -20°C

\*\*\* Les 20ul contiennent 0,1% de BSA.

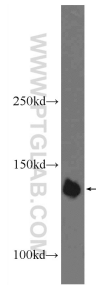
For technical support and original validation data for this product please contact:

T: 1 (888) 4PTGLAB (1-888-478-4522) (toll free in USA), or 1(312) 455-8498 (outside USA)

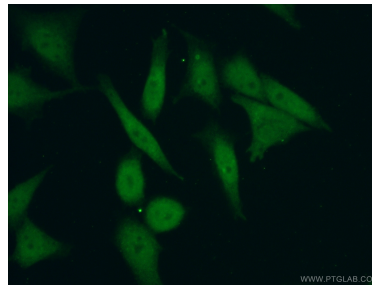
E: proteintech@ptglab.com  
W: ptglab.com

This product is exclusively available under Proteintech Group brand and is not available to purchase from any other manufacturer.

## Données de validation sélectionnées



HeLa cells were subjected to SDS PAGE followed by western blot with 22010-1-AP (PHF20 Antibody) at dilution of 1:1000 incubated at room temperature for 1.5 hours.



Immunofluorescent analysis of (10% Formaldehyde) fixed HeLa cells using 22010-1-AP (PHF20 antibody) at dilution of 1:50 and Alexa Fluor 488-conjugated AffiniPure Goat Anti-Rabbit IgG(H+L).