

À des fins de recherche uniquement

# Anticorps Polyclonal de lapin anti-ARPC5L



Numéro de catalogue: 22025-1-AP

1 Publications

## Informations de base

Numéro de catalogue:

22025-1-AP

Taille:

150ul, Concentration: 600 µg/ml by Nanodrop;

Hôte:

Lapin

Isotype:

IgG

Immunogen Catalog Number:

AG16881

Numéro d'acquisition GenBank:

BC000798

Identification du gène (NCBI):

81873

Nom complet:

actin related protein 2/3 complex, subunit 5-like

MW calculé

17 kDa

MW observés:

17-20 kDa

Méthode de purification:

Purification par affinité contre l'antigène

Dilutions recommandées:

WB 1:1000-1:4000

IP 0.5-4.0 ug for IP and 1:500-1:2000 for WB

IHC 1:20-1:200

IF 1:10-1:100

## Applications

Applications testées:

FC, IF, IHC, IP, WB, ELISA

Demandes citées:

IF, WB

Spécificité de l'espèce:

Humain, rat, souris

Espèces citées:

Humain

**Remarque-IHC: il est suggéré de démasquer l'antigène avec un tampon de TE buffer pH 9,0; (\*) À défaut, le démasquage de l'antigène peut être effectué avec un tampon citrate pH 6,0.**

Contrôles positifs:

WB : tissu cérébral de souris, cellules NIH/3T3, tissu cérébral de rat, tissu cérébral humain, tissu pulmonaire de souris

IP : tissu cérébral de souris,

IHC : tissu placentaire humain, tissu de cervelet humain

IF : cellules MCF-7,

## Informations générales

ARPC5L, also known as ARC16-2, belongs to the ARPC5 family. ARPC5L is involved in Arp2/3 complex-mediated actin nucleation and together with an activating nucleation-promoting factor (NPF) mediates the formation of branched actin networks. ARPC5L-containing Arp2/3 complexes are required for the peripheral positioning of nuclei in myofibers (PMID: 28892082). The molecular mass of ARPC5L is 17-20 kDa.

## Publications notables

Autrice

Jason W. Lui

Pubmed ID

34468072

Journal

Pigment Cell Melanoma Res

Application

WB,IF

## Stockage

Stockage:

Stocker à -20°C. Stable pendant un an après l'expédition.

Tampon de stockage:

PBS avec azote de sodium à 0,02 % et glycérol à 50 % pH 7,3

L'aliquotage n'est pas nécessaire pour le stockage à -20C

\*\*\* Les 20ul contiennent 0,1% de BSA.

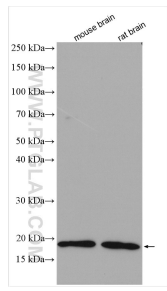
For technical support and original validation data for this product please contact:

T: 1 (888) 4PTGLAB (1-888-478-4522) (toll free in USA), or 1(312) 455-8498 (outside USA)

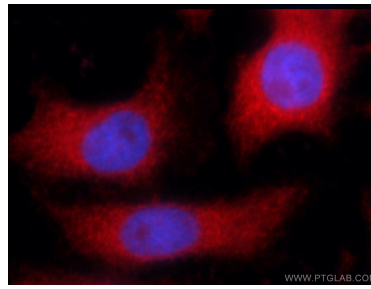
E: [proteintech@ptglab.com](mailto:proteintech@ptglab.com)  
W: [ptglab.com](http://ptglab.com)

This product is exclusively available under Proteintech Group brand and is not available to purchase from any other manufacturer.

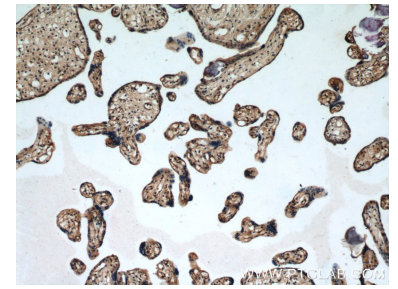
## Données de validation sélectionnées



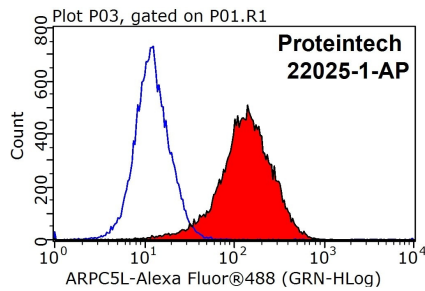
Various lysates were subjected to SDS PAGE followed by western blot with 22025-1-AP (ARPC5L antibody) at dilution of 1:2000 incubated at room temperature for 1.5 hours.



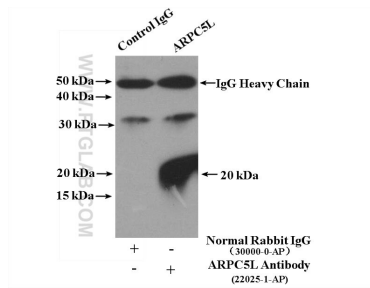
Immunofluorescent analysis of MCF-7 cells using 22025-1-AP (ARPC5L antibody) at dilution of 1:25 and Rhodamine-Goat anti-Rabbit IgG.



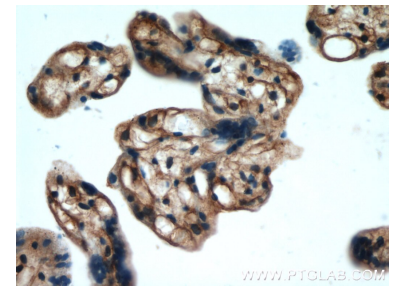
Immunohistochemical analysis of paraffin-embedded human placenta using 22025-1-AP (ARPC5L antibody) at dilution of 1:50 (under 10x lens).



1X10<sup>6</sup> MCF-7 cells were stained with 0.2ug ARPC5L antibody (22025-1-AP, red) and control antibody (blue). Fixed with 90% MeOH blocked with 3% BSA (30 min). Alexa Fluor 488-conjugated AffiniPure Goat Anti-Rabbit IgG(H+L) with dilution 1:1000.



IP Result of anti-ARPC5L (IP:22025-1-AP, 4ug; Detection:22025-1-AP 1:1000) with mouse brain tissue lysate 4000ug.



Immunohistochemical analysis of paraffin-embedded human placenta using 22025-1-AP (ARPC5L antibody) at dilution of 1:50 (under 40x lens).