

À des fins de recherche uniquement

Anticorps Polyclonal de lapin anti-SARA



Numéro de catalogue: 22033-1-AP

Phare

3 Publications

Informations de base

Numéro de catalogue:

22033-1-AP

Taille:

150ul, Concentration: 450 µg/ml by Nanodrop;

Hôte:

Lapin

Isotype:

IgG

Immunogen Catalog Number:

AG16929

Numéro d'acquisition GenBank:

BC032680

Identification du gène (NCBI):

9372

Nom complet:

zinc finger, FYVE domain containing 9

MW calculé

1425 aa, 156 kDa

MW observés:

156 kDa

Méthode de purification:

Purification par affinité contre l'antigène

Dilutions recommandées:

WB 1:500-1:2000

IP 0.5-4.0 µg for IP and 1:500-1:2000 for WB

IHC 1:20-1:200

IF 1:50-1:500

Applications

Applications testées:

IF, IHC, IP, WB, ELISA

Demandes citées:

IF, WB

Spécificité de l'espèce:

Humain, rat, souris

Espèces citées:

Humain, souris

Contrôles positifs:

WB : cellules HEK-293, cellules HeLa, cellules MCF-7, tissu cérébral de souris, tissu cérébral humain

IP : tissu cérébral de souris,

IHC : tissu rénal humain,

IF : tissu cérébral de souris, tissu rénal de souris

Remarque-IHC: il est suggéré de démasquer l'antigène avec un tampon de TE buffer pH 9,0; (*) À défaut, le démasquage de l'antigène peut être effectué avec un tampon citrate pH 6,0.

Informations générales

ZFYVE9, also known as SARA (Smad anchor for receptor activation), is a double zinc finger (FYVE domain) protein that interacts directly with SMAD2 and SMAD3, and is involved in Alzheimer's disease. SARA functions to recruit SMAD2/SMAD3 to intracellular membranes and to the TGF-beta receptor. SARA plays a significant role in TGF-mediated signaling by regulating the subcellular location of SMAD2 and SMAD3 and modulating the transcriptional activity of the SMAD3/SMAD4 complex. SARA is possibly associated with TGF-beta receptor internalization.

Publications notables

Autrice	Pubmed ID	Journal	Application
Changgui Shi	36321807	J Bone Miner Res	WB,IF
Deepankar Gahloth	28602823	Structure	WB
Zheng-Zhou Lu	37224259	Sci Adv	WB,IF

Stockage

Stockage:

Stocker à -20°C. Stable pendant un an après l'expédition.

Tampon de stockage:

PBS avec azoture de sodium à 0,02 % et glycérol à 50 % pH 7,3

L'aliquotage n'est pas nécessaire pour le stockage à -20C

*** Les 20ul contiennent 0,1% de BSA.

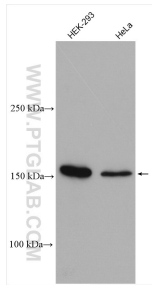
For technical support and original validation data for this product please contact:

T: 1 (888) 4PTGLAB (1-888-478-4522) (toll free in USA), or 1(312) 455-8498 (outside USA)

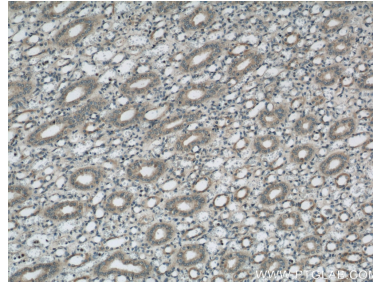
E: proteintech@ptglab.com
W: ptglab.com

This product is exclusively available under Proteintech Group brand and is not available to purchase from any other manufacturer.

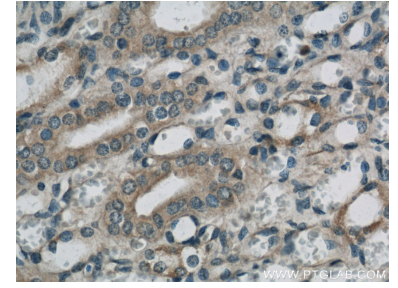
Données de validation sélectionnées



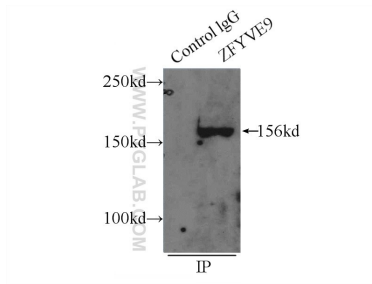
Various lysates were subjected to SDS PAGE followed by western blot with 22033-1-AP (SARA antibody) at dilution of 1:1000 incubated at room temperature for 1.5 hours.



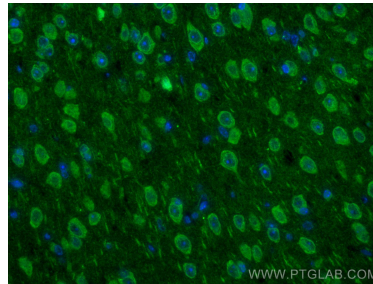
Immunohistochemical analysis of paraffin-embedded human kidney using 22033-1-AP (SARA antibody) at dilution of 1:50 (under 10x lens).



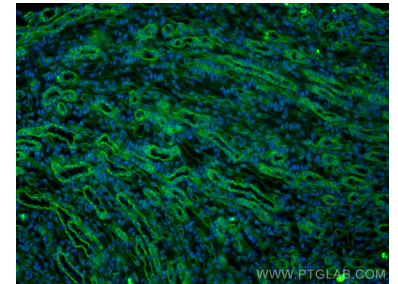
Immunohistochemical analysis of paraffin-embedded human kidney using 22033-1-AP (SARA antibody) at dilution of 1:50 (under 40x lens).



IP Result of anti-SARA (IP:22033-1-AP, 5ug; Detection:22033-1-AP 1:1000) with mouse brain tissue lysate 5000ug.



Immunofluorescent analysis of (4% PFA) fixed mouse brain tissue using SARA antibody (22033-1-AP) at dilution of 1:200 and CoraLite®488-Conjugated AffiniPure Goat Anti-Rabbit IgG(H+L).



Immunofluorescent analysis of (4% PFA) fixed mouse kidney tissue using SARA antibody (22033-1-AP) at dilution of 1:200 and CoraLite®488-Conjugated AffiniPure Goat Anti-Rabbit IgG(H+L).