

À des fins de recherche uniquement

# Anticorps Polyclonal de lapin anti-PDE6B



Numéro de catalogue: 22063-1-AP

7 Publications

## Informations de base

Numéro de catalogue:

22063-1-AP

Taille:

150ul, Concentration: 750 µg/ml by Nanodrop and 420 µg/ml by Bradford method using BSA as the standard;

Hôte:

Lapin

Isotype:

IgG

Immunogen Catalog Number:

AG17139

Numéro d'acquisition GenBank:

BC000249

Identification du gène (NCBI):

5158

Nom complet:

phosphodiesterase 6B, cGMP-specific, rod, beta

MW calculé

854 aa, 98 kDa

MW observés:

98 kDa

Méthode de purification:

Purification par affinité contre l'antigène

Dilutions recommandées:

WB 1:500-1:2000

IP 0.5-4.0 ug for IP and 1:500-1:2000 for WB

IF 1:50-1:500

## Applications

Applications testées:

IF, IP, WB, ELISA

Demandes citées:

IF, IHC, WB

Spécificité de l'espèce:

Humain, rat, souris

Espèces citées:

Humain, poisson-zèbre, souris

Contrôles positifs:

WB : tissu oculaire de souris, cellules A549, tissu oculaire de rat

IP : cellules Y79,

IF : tissu oculaire de souris,

## Informations générales

PDE6 is a cGMP-specific PDE family and presents multicomponent enzyme complexes. The rod PDE6 enzyme is comprised of two catalytic subunits (PDE6A and PDE6B) and it is expressed in human lungs (PMID:20979602). PDE6B(Rod cGMP-specific 3',5'-cyclic phosphodiesterase subunit beta) is also named as PDEB and belongs to the cyclic nucleotide phosphodiesterase family. PDE6B also has a C-terminal CAAX motif for posttranslational processing involving lipidation, proteolysis, and carboxymethylation (PMID:8394243). Defects in PDE6B are the cause of retinitis pigmentosa type 40 (RP40)(PMID:22334370) and congenital stationary night blindness autosomal dominant type 2 (CSNBAD2) (PMID:8075643).

## Publications notables

Autrice	Pubmed ID	Journal	Application
Carla Sanjurjo-Soriano	36114559	Stem Cell Res Ther	WB
Poppy Datta	31694913	J Biol Chem	WB,IF
Poppy Datta	33961633	PLoS One	WB, IHC

## Stockage

Stockage:

Stocker à -20°C. Stable pendant un an après l'expédition.

Tampon de stockage:

PBS avec azoture de sodium à 0,02 % et glycérol à 50 % pH 7,3

L'aliquotage n'est pas nécessaire pour le stockage à -20C

\*\*\* Les 20ul contiennent 0,1% de BSA.

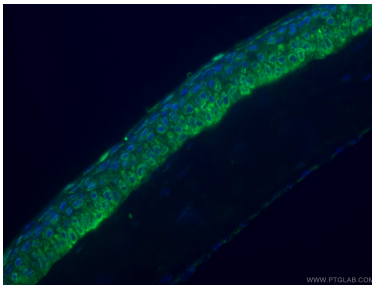
For technical support and original validation data for this product please contact:

T: 1 (888) 4PTGLAB (1-888-478-4522) (toll free in USA), or 1(312) 455-8498 (outside USA)

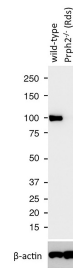
E: proteintech@ptglab.com  
W: ptglab.com

This product is exclusively available under Proteintech Group brand and is not available to purchase from any other manufacturer.

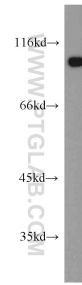
## Données de validation sélectionnées



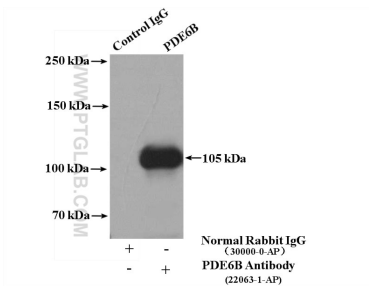
Immunofluorescent analysis of (4% PFA) fixed mouse eye tissue using PDE6B antibody (22063-1-AP) at dilution of 1:100 and CoraLite®488-Conjugated AffiniPure Goat Anti-Rabbit IgG(H+L).



WB results of PDE6B antibody (22063-1-AP) with WT mouse Eye and Prph2 (Rds) mutant mouse Eye (Negative control). Courtesy of Seongjin Seo, PhD, University of Iowa College of Medicine.



mouse eye tissue were subjected to SDS PAGE followed by western blot with 22063-1-AP (PDE6B antibody) at dilution of 1:1000 incubated at room temperature for 1.5 hours.



IP Result of anti-PDE6B (IP:22063-1-AP, 4ug; Detection:22063-1-AP 1:1000) with Y79 cells lysate 2000ug.