

À des fins de recherche uniquement

Anticorps Polyclonal de lapin anti-IMPDPH1



Numéro de catalogue: 22092-1-AP

Phare

11 Publications

Informations de base

Numéro de catalogue:

22092-1-AP

Taille:

150ul, Concentration: 550 µg/ml by Nanodrop;

Hôte:

Lapin

Isotype:

IgG

Immunogen Catalog Number:

AG17297

Numéro d'acquisition GenBank:

BC033622

Identification du gène (NCBI):

3614

Nom complet:

IMP (inosine monophosphate) dehydrogenase 1

MW calculé

563 aa, 60 kDa

MW observés:

53-60 kDa

Méthode de purification:

Purification par affinité contre l'antigène

Dilutions recommandées:

WB 1:1000-1:6000

IP 0.5-4.0 µg for IP and 1:1000-1:4000 for WB

IHC 1:20-1:200

IF 1:20-1:200

Applications

Applications testées:

IF, IHC, IP, WB, ELISA

Demandes citées:

IF, IHC, IP, WB

Spécificité de l'espèce:

Humain, rat, souris

Espèces citées:

Humain, souris

Remarque-IHC: il est suggéré de démasquer l'antigène avec un tampon de TE buffer pH 9,0; (*) À défaut, le démasquage de l'antigène peut être effectué avec un tampon citrate pH 6,0.

Contrôles positifs:

WB : cellules HeLa, cellules A431, cellules K-562, cellules Raji, tissu splénique de rat, tissu splénique de souris

IP : cellules HeLa,

IHC : tissu de tumeur ovarienne humain, tissu d'amygdalite humain

IF : cellules HeLa,

Informations générales

IMPDPH1 (Inosine-5'-monophosphate dehydrogenase 1) is also named as IMPDP1, IMP dehydrogenase 1 and belongs to the IMPDPH/GMPR family. It catalyzes the rate limiting step of de novo guanine synthesis and an important target for the development of drugs with both chemotherapeutic and immunosuppressive activity. It may also have a role in the development of malignancy and the growth progression of some tumors. This protein has some isoforms produced by alternative splicing with the molecular mass of 53-65 kDa. This antibody may have cross reaction with IMPDPH2 due to their high homology.

Publications notables

Autrice	Pubmed ID	Journal	Application
Narges Ahangari	34498062	J Neuropathol Exp Neurol	IF
Jake W Noble	27798680	PLoS One	IF
Eunus S Ali	32485148	Mol Cell	WB

Stockage

Stockage:

Stocker à -20°C. Stable pendant un an après l'expédition.

Tampon de stockage:

PBS avec azoture de sodium à 0,02 % et glycérol à 50 % pH 7,3

L'aliquotage n'est pas nécessaire pour le stockage à -20C

*** Les 20ul contiennent 0,1% de BSA.

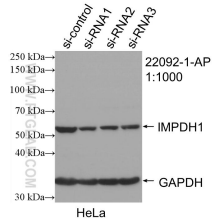
For technical support and original validation data for this product please contact:

T: 1 (888) 4PTGLAB (1-888-478-4522) (toll free in USA), or 1(312) 455-8498 (outside USA)

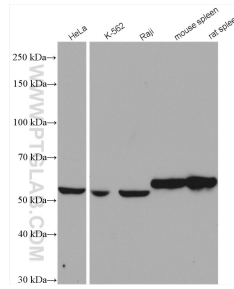
E: proteintech@ptglab.com
W: ptglab.com

This product is exclusively available under Proteintech Group brand and is not available to purchase from any other manufacturer.

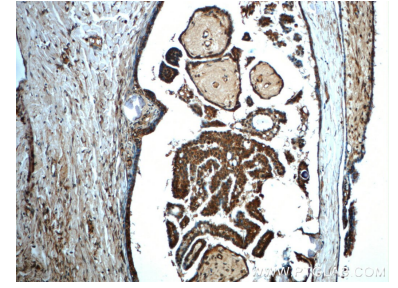
Données de validation sélectionnées



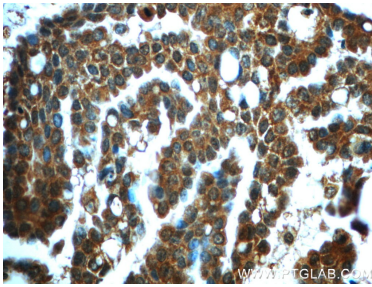
WB result of IMPDH1 antibody (22092-1-AP; 1:1000; incubated at room temperature for 1.5 hours) with sh-Control and sh-IMPDH1 transfected HeLa cells.



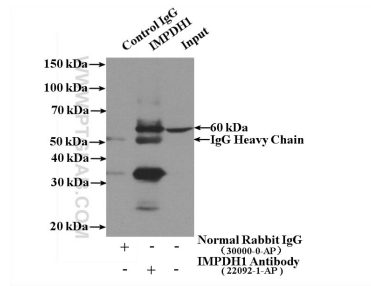
Various lysates were subjected to SDS PAGE followed by western blot with 22092-1-AP (IMPDH1 antibody) at dilution of 1:3000 incubated at room temperature for 1.5 hours.



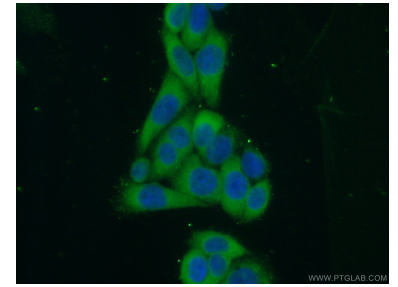
Immunohistochemical analysis of paraffin-embedded human ovary tumor slide using 22092-1-AP (IMPDH1 Antibody) at dilution of 1:50.



Immunohistochemical analysis of paraffin-embedded human ovary tumor slide using 22092-1-AP (IMPDH1 Antibody) at dilution of 1:50.



IP Result of anti-IMPDPH1 (IP:22092-1-AP, 4ug; Detection:22092-1-AP 1:2000) with HeLa cells lysate 3200ug.



Immunofluorescent analysis of (10% Formaldehyde) fixed HeLa cells using 22092-1-AP (IMPDH1 antibody) at dilution of 1:50 and Alexa Fluor 488-conjugated AffiniPure Goat Anti-Rabbit IgG(H+L).