

À des fins de recherche uniquement

Anticorps Polyclonal de lapin anti-CDX2



Numéro de catalogue: 22101-1-AP

Informations de base

Numéro de catalogue: 22101-1-AP	Numéro d'acquisition GenBank: BC014461	Méthode de purification: Purification par affinité contre l'antigène
Taille: 150ul , Concentration: 450 µg/ml by Nanodrop;	Identification du gène (NCBI): 1045	Dilutions recommandées: WB 1:500-1:2000
Hôte: Lapin	Nom complet: caudal type homeobox 2	
Isotype: IgG	MW calculé: 313 aa, 34 kDa	
Immunogen Catalog Number: AG17310	MW observés: 33-40 kDa	

Applications

Applications testées: WB, ELISA	Contrôles positifs: WB : cellules COLO 320, tissu cérébral de souris
Spécificité de l'espèce: Humain, souris	

Informations générales

CDX2, also named as Homeobox protein CDX-2, is a 313 amino acid protein, which contains one homeobox DNA-binding domain and belongs to the Caudal homeobox family. CDX2 localizes in the nucleus and is involved in the transcriptional regulation of multiple genes expression in the intestinal epithelium. The relative expression of CDX1 to CDX2 protein may be important in the anterior to posterior patterning of the intestinal epithelium and in defining patterns of proliferation and differentiation along the crypt-villus axis. Both Cdx1 and Cdx2 genes must be expressed to reduce tumorigenic potential, to increase sensitivity to apoptosis, and to reduce cell migration, suggesting that the two genes control the normal phenotype by independent pathways.

Stockage

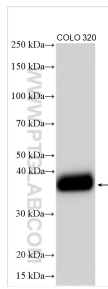
Stockage:
Stocker à -20°C. Stable pendant un an après l'expédition.
Tampon de stockage:
PBS avec azoture de sodium à 0,02 % et glycérol à 50 % pH 7,3
L'aliquotage n'est pas nécessaire pour le stockage à -20C

***** Les 20ul contiennent 0,1% de BSA.**

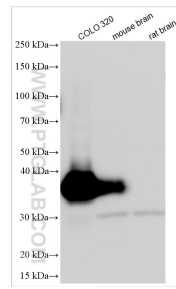
For technical support and original validation data for this product please contact:
T: 1 (888) 4PTGLAB (1-888-478-4522) (toll free in USA), or 1(312) 455-8498 (outside USA)
E: proteintech@ptglab.com
W: ptglab.com

This product is exclusively available under Proteintech Group brand and is not available to purchase from any other manufacturer.

Données de validation sélectionnées



Various lysates were subjected to SDS PAGE followed by western blot with 22101-1-AP (CDX2 antibody) at dilution of 1:1000 incubated at room temperature for 1.5 hours.



Various lysates were subjected to SDS PAGE followed by western blot with 22101-1-AP (CDX2 antibody) at dilution of 1:500 incubated at room temperature for 1.5 hours.