

À des fins de recherche uniquement

Anticorps Polyclonal de lapin anti-RBM22



Numéro de catalogue: 22103-1-AP

Informations de base

Numéro de catalogue: 22103-1-AP	Numéro d'acquisition GenBank: BC003402	Méthode de purification: Purification par affinité contre l'antigène
Taille: 150ul , Concentration: 1000 µg/ml by Nanodrop and 647 µg/ml by Bradford method using BSA as the standard;	Identification du gène (NCBI): 55696	Dilutions recommandées: WB 1:500-1:2000
Hôte: Lapin	Nom complet: RNA binding motif protein 22	
Isotype: IgG	MW calculé 420 aa, 47 kDa	
Immunogen Catalog Number: AG17315	MW observés: 47-50 kDa	

Applications

Applications testées: WB, ELISA	Contrôles positifs: WB : cellules Raji, cellules NIH/3T3
Spécificité de l'espèce: Humain, rat, souris	

Informations générales

RBM22 is mainly involved in pre-mRNA splicing, playing the essential role of maintaining the conformation of the catalytic core of the spliceosome and acting as a bridge between the catalytic core and other essential protein components of the spliceosome. RBM22 is also involved in gene regulation, and is able to bind DNA, acting as a bona fide transcription factor on a large number of target genes. Due to its wide scope in the regulation of gene expression, RBM22 has been associated with several pathologies and, notably, with the aggressiveness of cancer cells and with the phenotype of a myelodysplastic syndrome. (PMID: 35158909)

Stockage

Stockage:
Stocker à -20°C. Stable pendant un an après l'expédition.
Tampon de stockage:
PBS avec azoture de sodium à 0,02 % et glycérol à 50 % pH 7,3
L'aliquotage n'est pas nécessaire pour le stockage à -20C

*** Les 20ul contiennent 0,1% de BSA.

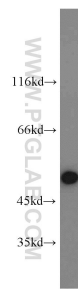
For technical support and original validation data for this product please contact:

T: 1 (888) 4PTGLAB (1-888-478-4522) (toll free in USA), or 1(312) 455-8498 (outside USA)

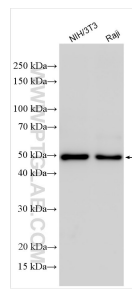
E: proteintech@ptglab.com
W: ptglab.com

This product is exclusively available under Proteintech Group brand and is not available to purchase from any other manufacturer.

Données de validation sélectionnées



Raji cells were subjected to SDS PAGE followed by western blot with 22103-1-AP (RBM22 antibody) at dilution of 1:1000 incubated at room temperature for 1.5 hours.



Various lysates were subjected to SDS PAGE followed by western blot with 22103-1-AP (RBM22 antibody) at dilution of 1:5000 incubated at room temperature for 1.5 hours.