

À des fins de recherche uniquement

Anticorps Polyclonal de lapin anti-ALDH1A1-specific



Numéro de catalogue: 22109-1-AP

Phare

7 Publications

Informations de base

Numéro de catalogue:
22109-1-AP

Taille:
150ul, Concentration: 500 µg/ml by Nanodrop and 313 µg/ml by Bradford method using BSA as the standard;

Hôte:
Lapin

Isotype:
IgG

Immunogen Catalog Number:
AG17358

Numéro d'acquisition GenBank:
BC001505

Identification du gène (NCBI):
216

Nom complet:
aldehyde dehydrogenase 1 family, member A1

MW calculé:
501 aa, 55 kDa

MW observés:
55 kDa

Méthode de purification:
Purification par affinité contre l'antigène

Dilutions recommandées:
WB 1:500-1:2000
IHC 1:20-1:200
IF 1:50-1:500

Applications

Applications testées:
FC, IF, IHC, WB, ELISA

Demandes citées:
IF, IP, WB

Spécificité de l'espèce:
Humain, rat, souris

Espèces citées:
Humain, souris

Remarque-IHC: il est suggéré de démasquer l'antigène avec un tampon de TE buffer pH 9,0; (*) A défaut, le démasquage de l'antigène peut être effectué avec un tampon citrate pH 6,0.

Contrôles positifs:

WB : tissu hépatique humain, cellules K-562, tissu de glande surrénale humaine, tissu hépatique de souris

IHC : tissu hépatique humain, tissu de cirrhose hépatique humaine

IF : cellules A549,

Informations générales

ALDH1A1 (Aldehyde dehydrogenase family 1 member A1), also named as ALDC, ALDH1 and PUMB1, belongs to the aldehyde dehydrogenase family. The ALDH1A1 gene encodes a liver cytosolic isoform of acetaldehyde dehydrogenase, an enzyme involved in the major pathway of alcohol metabolism after alcohol dehydrogenase. ALDH1A1 plays a critical role in protection against oxidative stress-induced cytotoxicity in lens epithelial cells (PMID:19296407). And it is important for multiple biological activities including drug resistance, cell differentiation, and oxidative stress response (PMID:19025616). As a novel cancer stem cell marker, ALDH1A1 can be used for tumors whose corresponding normal tissues express ALDH1 in relatively restricted or limited levels such as breast, lung, ovarian or colon cancer (PMID: 20422001). This antibody can also recognize some other membranes of the aldehyde dehydrogenase family. This antibody is specific to ALDH1A1.

Publications notables

Autrice	Pubmed ID	Journal	Application
Dandan Liu	33367934	Int J Oncol	WB
L Yang	28895409	Neoplasma	WB
Junlong Zhuang	28839463	Theranostics	WB

Stockage

Stockage:

Stocker à -20°C. Stable pendant un an après l'expédition.

Tampon de stockage:

PBS avec azoture de sodium à 0,02 % et glycérol à 50 % pH 7,3

L'aliquotage n'est pas nécessaire pour le stockage à -20C

*** Les 20ul contiennent 0,1% de BSA.

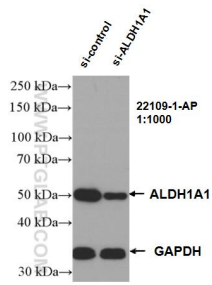
For technical support and original validation data for this product please contact:

T: 1 (888) 4PTGLAB (1-888-478-4522) (toll free in USA), or 1(312) 455-8498 (outside USA)

E: proteintech@ptglab.com
W: ptglab.com

This product is exclusively available under Proteintech Group brand and is not available to purchase from any other manufacturer.

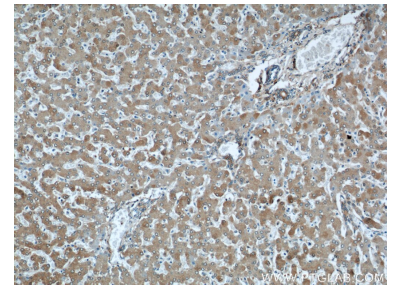
Données de validation sélectionnées



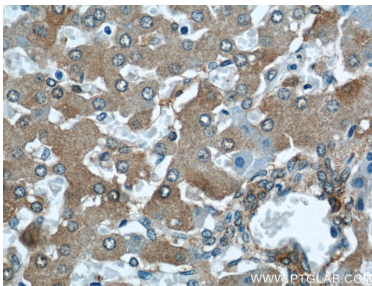
WB result of ALDH1A1 antibody (22109-1-AP; 1:1000; incubated at room temperature for 1.5 hours) with sh-Control and sh-ALDH1A1 transfected K-562 cells.



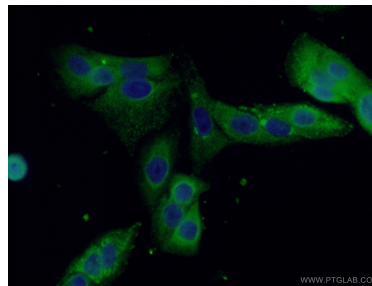
human liver tissue were subjected to SDS PAGE followed by western blot with 22109-1-AP (ALDH1A1 antibody) at dilution of 1:1000 incubated at room temperature for 1.5 hours.



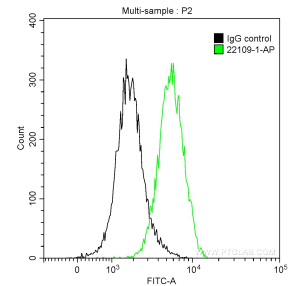
Immunohistochemical analysis of paraffin-embedded human liver using 22109-1-AP (ALDH1A1 antibody) at dilution of 1:50 (under 10x lens).



Immunohistochemical analysis of paraffin-embedded human liver using 22109-1-AP (ALDH1A1 antibody) at dilution of 1:50 (under 40x lens).



Immunofluorescent analysis of (-20°C Ethanol) fixed A549 cells using 22109-1-AP (ALDH1A1 antibody) at dilution of 1:50 and Alexa Fluor 488-conjugated AffiniPure Goat Anti-Rabbit IgG(H+L).



1×10^6 HeLa cells were intracellularly stained with 0.2 μ g Anti-Human ALDH1A1-specific (22109-1-AP) and CoraLite@488-Conjugated AffiniPure Goat Anti-Rabbit IgG(H+L) at dilution 1:1000 (green), and 0.2 μ g Control Antibody. Cells were fixed with 90% MeOH.