

À des fins de recherche uniquement

Anticorps Polyclonal de lapin anti-RCC1



Numéro de catalogue: 22142-1-AP

6 Publications

Informations de base

Numéro de catalogue:
22142-1-AP

Taille:
150ul, Concentration: 500 µg/ml by Nanodrop and 380 µg/ml by Bradford method using BSA as the standard;

Hôte:
Lapin

Isotype:
IgG

Immunogen Catalog Number:
AG17569

Numéro d'acquisition GenBank:
BC010067

Identification du gène (NCBI):

1104
Nom complet:
regulator of chromosome condensation 1

MW calculé
421 aa, 45 kDa

MW observés:
45-50 kDa

Méthode de purification:
Purification par affinité contre l'antigène

Dilutions recommandées:
WB 1:1000-1:4000
IP 0.5-4.0 ug for IP and 1:500-1:2000 for WB
IHC 1:20-1:200
IF 1:50-1:500

Applications

Applications testées:
IF, IHC, IP, WB, ELISA

Demandes citées:
IF, IHC, WB

Spécificité de l'espèce:
Humain, rat, singe, souris

Espèces citées:
Humain, souris

Remarque-IHC: il est suggéré de démasquer l'antigène avec un tampon de TE buffer pH 9,0; (*) A défaut, 'le démasquage de l'antigène peut être effectué avec un tampon citrate pH 6,0.

Contrôles positifs:

WB : cellules A431, cellules HEK-293, cellules NIH/3T3

IP : cellules HEK-293,

IHC : tissu testiculaire humain, tissu d'intestin grêle humain

IF : tissu cérébral de souris, cellules A431

Informations générales

CHC1, also named as RCC1, promotes the exchange of ran-bound gdp by gtp. It is involved in the regulation of onset of chromosome condensation in the S-phase. Phosphorylation of RCC1 on serines located in or near its nuclear localization signal activates RCC1 to generate RanGTP on mitotic chromosomes, which is required for spindle assembly and chromosome segregation. This antibody is a rabbit polyclonal antibody raised against residues near the C terminus of human RCC1.

Publications notables

| Autrice | Pubmed ID | Journal | Application |
|----------------------|-----------|----------------|-------------|
| Yudong Song | 30241030 | Biomaterials | WB |
| Diana Vargas-Hurtado | 31495584 | Curr Biol | IF |
| Lijun Qiao | 29789527 | Cell Death Dis | IHC |

Stockage

Stockage:

Stocker à -20°C. Stable pendant un an après l'expédition.

Tampon de stockage:

PBS avec azoture de sodium à 0,02 % et glycérol à 50 % pH 7,3

L'aliquotage n'est pas nécessaire pour le stockage à -20C

*** Les 20ul contiennent 0,1% de BSA.

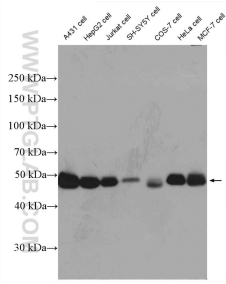
For technical support and original validation data for this product please contact:

T: 1 (888) 4PTGLAB (1-888-478-4522) (toll free in USA), or 1(312) 455-8498 (outside USA)

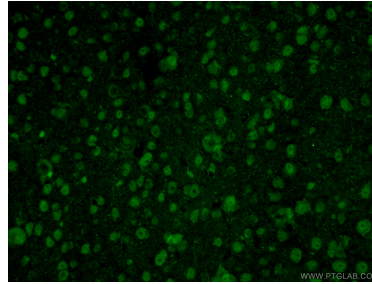
E: proteintech@ptglab.com
W: ptglab.com

This product is exclusively available under Proteintech Group brand and is not available to purchase from any other manufacturer.

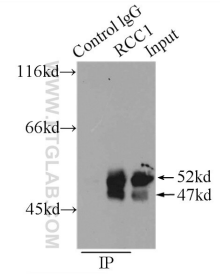
Données de validation sélectionnées



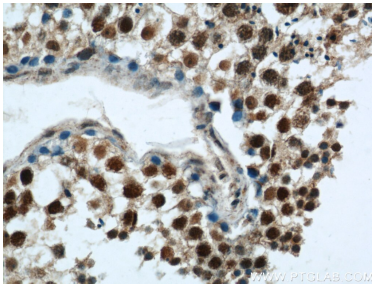
A431 cells were subjected to SDS PAGE followed by western blot with 22142-1-AP (RCC1 antibody) at dilution of 1:2000 incubated at room temperature for 1.5 hours.



Immunofluorescent analysis of (4% PFA) fixed mouse brain tissue using 22142-1-AP (RCC1 antibody) at dilution of 1:50 and Alexa Fluor 488-Conjugated AffiniPure Goat Anti-Rabbit IgG(H+L).



IP Result of anti-RCC1 (IP:22142-1-AP, 3ug; Detection:22142-1-AP 1:1000) with HEK-293 cells lysate 1000ug.



Immunohistochemical analysis of paraffin-embedded human testis using 22142-1-AP (RCC1 antibody) at dilution of 1:50 (under 40x lens).