

À des fins de recherche uniquement

# Anticorps Polyclonal de lapin anti-PYCR1



Numéro de catalogue: 22150-1-AP

Phare

1 Publications

## Informations de base

Numéro de catalogue:  
22150-1-AP

Taille:  
150ul , Concentration: 400 µg/ml by Nanodrop and 327 µg/ml by Bradford method using BSA as the standard;

Hôte:  
Lapin

Isotype:  
IgG

Immunogen Catalog Number:  
AG17745

Numéro d'acquisition GenBank:  
BC022244

Identification du gène (NCBI):  
5831

Nom complet:  
pyrroline-5-carboxylate reductase 1

MW calculé  
319 aa, 33 kDa

MW observés:  
33 kDa

Méthode de purification:  
Purification par affinité contre l'antigène

Dilutions recommandées:  
WB 1:500-1:2000  
IP 0.5-4.0 ug for IP and 1:500-1:2000 for WB  
IF 1:50-1:500

## Applications

Applications testées:  
IF, IP, WB, ELISA

Demandes citées:  
WB

Spécificité de l'espèce:  
Humain, rat, souris

Espèces citées:  
Humain

Contrôles positifs:

WB : cellules HeLa, cellules COLO 320

IP : cellules HeLa,

IF : cellules HeLa,

## Informations générales

PYCR1, also named as P5CR1, belongs to the pyrroline-5-carboxylate reductase family. It is a housekeeping enzyme that catalyzes the last step in proline biosynthesis. PYCR1 can utilize both NAD and NADP, but has higher affinity for NAD. It is involved in the cellular response to oxidative stress. Mutation in PYCR1 will cause ARCL type II (ARCL2B). Some mutation will cause DeBary syndrome (DBS) which is characterized by progeroid features, ophthalmological abnormalities, intrauterine growth retardation, and cutis laxa. The MW of PYCR1 is about 33-35kd. This antibody may have cross reaction to PYCR2 due to the high homology.

## Publications notables

Autrice	Pubmed ID	Journal	Application
Emily J Kay	35760868	Nat Metab	WB

## Stockage

Stockage:

Stocker à -20°C. Stable pendant un an après l'expédition.

Tampon de stockage:

PBS avec azoture de sodium à 0,02 % et glycérol à 50 % pH 7,3

L'aliquotage n'est pas nécessaire pour le stockage à -20C

\*\*\* Les 20ul contiennent 0,1% de BSA.

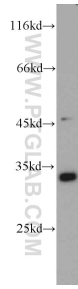
For technical support and original validation data for this product please contact:

T: 1 (888) 4PTGLAB (1-888-478-4522) (toll free in USA), or 1(312) 455-8498 (outside USA)

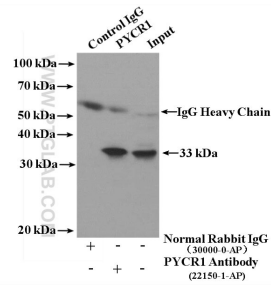
E: proteintech@ptglab.com  
W: ptglab.com

This product is exclusively available under Proteintech Group brand and is not available to purchase from any other manufacturer.

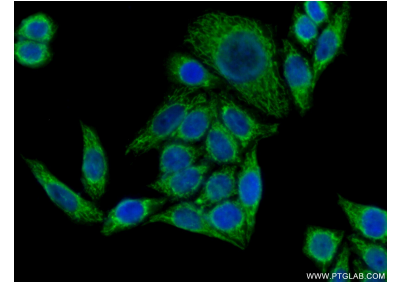
## Données de validation sélectionnées



HeLa cells were subjected to SDS PAGE followed by western blot with 22150-1-AP (PYCR1 antibody) at dilution of 1:1000 incubated at room temperature for 1.5 hours.



IP Result of anti-PYCR1 (IP:22150-1-AP, 4ug; Detection:22150-1-AP 1:1000) with HeLa cells lysate 3200ug.



Immunofluorescent analysis of (10% Formaldehyde) fixed HeLa cells using 22150-1-AP (PYCR1 antibody) at dilution of 1:50 and Alexa Fluor 488-conjugated AffiniPure Goat Anti-Rabbit IgG(H+L).