

À des fins de recherche uniquement

# Anticorps Polyclonal de lapin anti-IQGAP1



Numéro de catalogue: 22167-1-AP

Phare

10 Publications

## Informations de base

Numéro de catalogue:  
22167-1-AP

Taille:  
150ul, Concentration: 500 µg/ml by Nanodrop and 360 µg/ml by Bradford method using BSA as the standard;

Hôte:  
Lapin

Isotype:  
IgG

Immunogen Catalog Number:  
AG17821

Numéro d'acquisition GenBank:  
BC151834

Identification du gène (NCBI):  
8826

Nom complet:  
IQ motif containing GTPase activating protein 1

MW calculé:  
189 kDa

MW observés:  
190-195 kDa

Méthode de purification:  
Purification par affinité contre l'antigène

Dilutions recommandées:  
WB 1:2000-1:10000  
IP 0.5-4.0 ug for IP and 1:500-1:2000 for WB  
IHC 1:50-1:500  
IF 1:200-1:800

## Applications

Applications testées:  
FC, IF, IHC, IP, WB, ELISA

Demandes citées:  
IF, IHC, IP, WB

Spécificité de l'espèce:  
Humain, souris

Espèces citées:  
Humain, souris

**Remarque-IHC: il est suggéré de démasquer l'antigène avec un tampon de TE buffer pH 9,0; (\*) A défaut, 'le démasquage de l'antigène peut être effectué avec un tampon citrate pH 6,0.**

Contrôles positifs:

WB : cellules A549, cellules HEK-293, cellules HeLa, cellules HepG2, cellules NIH/3T3, cellules SGC-7901

IP : cellules HeLa,

IHC : tissu de cancer du sein humain, tissu de cancer du côlon humain, tissu de cancer du foie humain

IF : cellules HeLa, cellules A549

## Informations générales

IQGAP1 is a member of a family of scaffolding proteins that interact with signaling and structural molecules. It localizes to sites of cell-cell contact in epithelial cells and regulates distinct cellular processes including cell adhesion, cell migration, extracellular signals through interacting with numerous protein. Multiple studies have shown that IQGAP1 is up-regulated in many human malignancies, such as lung cancer, ovarian cancer, colon cancer, breast cancer, melanoma and HCC. And IQGAP1 plays a critical role in cancer cell invasion.

## Publications notables

Autrice	Pubmed ID	Journal	Application
Emilie Renaud	36217175	Mol Cancer	WB
Yunfeng Hu	36209218	Cell Death Dis	WB
Qingqing Dai	36320006	BMC Cancer	IHC

## Stockage

Stockage:

Stocker à -20°C. Stable pendant un an après l'expédition.

Tampon de stockage:

PBS avec azoture de sodium à 0,02 % et glycérol à 50 % pH 7,3

L'aliquotage n'est pas nécessaire pour le stockage à -20C

\*\*\* Les 20ul contiennent 0,1% de BSA.

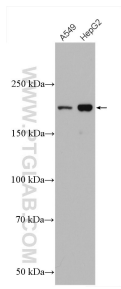
For technical support and original validation data for this product please contact:

T: 1 (888) 4PTGLAB (1-888-478-4522) (toll free in USA), or 1(312) 455-8498 (outside USA)

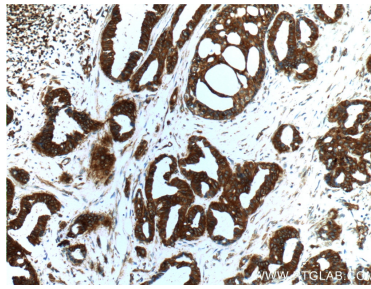
E: [proteintech@ptglab.com](mailto:proteintech@ptglab.com)  
W: [ptglab.com](http://ptglab.com)

This product is exclusively available under Proteintech Group brand and is not available to purchase from any other manufacturer.

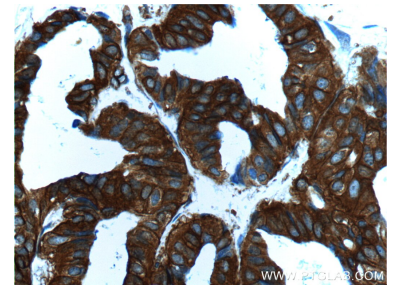
## Données de validation sélectionnées



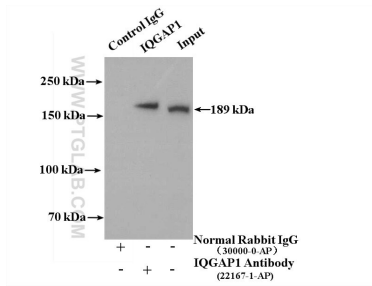
Various lysates were subjected to SDS PAGE followed by western blot with 22167-1-AP (IQGAP1 antibody) at dilution of 1:5000 incubated at room temperature for 1.5 hours.



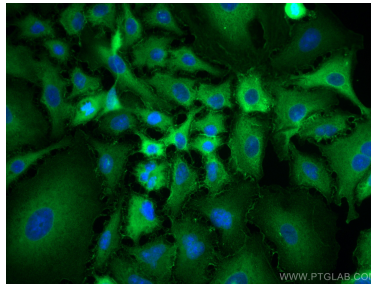
Immunohistochemical analysis of paraffin-embedded human breast cancer tissue slide using 22167-1-AP (IQGAP1 Antibody) at dilution of 1:200 (under 10x lens).



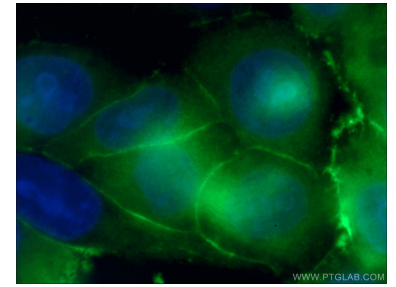
Immunohistochemical analysis of paraffin-embedded human breast cancer tissue slide using 22167-1-AP (IQGAP1 Antibody) at dilution of 1:200 (under 40x lens).



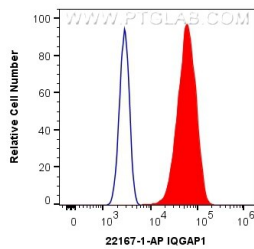
IP result of anti-IQGAP1 (IP:22167-1-AP, 4ug; Detection:22167-1-AP 1:1000) with HeLa cells lysate 2800 ug.



Immunofluorescent analysis of (-20°C Methanol) fixed A549 cells using IQGAP1 antibody (22167-1-AP) at dilution of 1:400 and CoraLite®488-Conjugated AffiniPure Goat Anti-Rabbit IgG(H+L).



Immunofluorescent analysis of (-20°C Ethanol) fixed HeLa cells using 22167-1-AP (IQGAP1 antibody) at dilution of 1:400 and Alexa Fluor 488-conjugated AffiniPure Goat Anti-Rabbit IgG(H+L).



$1 \times 10^6$  HeLa cells were intracellularly stained with 0.4 ug Anti-Human IQGAP1 (22167-1-AP) and CoraLite®488-Conjugated AffiniPure Goat Anti-Rabbit IgG(H+L) at dilution 1:1000 (red), or 0.4 ug Isotype Control. Cells were fixed with 4% PFA and permeabilized with Flow Cytometry Perm Buffer (PF00011-C).