

À des fins de recherche uniquement

Anticorps Polyclonal de lapin anti-CPT1B-specific



Numéro de catalogue: 22170-1-AP

Phare

38 Publications

Informations de base

Numéro de catalogue:

22170-1-AP

Taille:

150ul, Concentration: 500 µg/ml by Nanodrop;

Hôte:

Lapin

Isotype:

IgG

Immunogen Catalog Number:

AG17840

Numéro d'acquisition GenBank:

BC131570

Identification du gène (NCBI):

1375

Nom complet:

carnitine palmitoyltransferase 1B (muscle)

MW calculé

567 aa, 64 kDa

MW observés:

75-85 kDa

Méthode de purification:

Purification par affinité contre l'antigène

Dilutions recommandées:

WB 1:2000-1:10000

IP 0.5-4.0 µg for IP and 1:500-1:1000 for WB

IHC 1:50-1:500

IF 1:50-1:500

Applications

Applications testées:

IF, IHC, IP, WB, ELISA

Demandes citées:

IF, IHC, IP, WB

Spécificité de l'espèce:

Humain, rat, souris

Espèces citées:

Humain, poisson-zèbre, rat, souris, Brebis

Remarque-IHC: il est suggéré de démasquer l'antigène avec un tampon de TE buffer pH 9,0; (*) À défaut, le démasquage de l'antigène peut être effectué avec un tampon citrate pH 6,0.

Contrôles positifs:

WB : tissu cardiaque de souris, tissu cardiaque de rat, tissu de muscle squelettique de rat, tissu de muscle squelettique de souris

IP : tissu cardiaque de souris, tissu de muscle squelettique de souris

IHC : tissu cardiaque de souris,

IF : tissu cardiaque de souris,

Informations générales

Carnitine palmitoyltransferases (CPTs) mediate the transport of long chain fatty acyl groups into the mitochondrial matrix to undergo β -oxidation. Type I CPT resides in the outer mitochondrial membrane. Mammalian tissues express three isoforms: CPT1A (liver), CPT1B (muscle and heart), and CPT1C (brain). Several isoforms of CPT1B exist due to the alternative splicing, with predicted MW of 88/84/79/66 kDa.

Publications notables

Autrice	Pubmed ID	Journal	Application
Kevin Gibbs	32997738	J Gerontol A Biol Sci Med Sci	WB
Myeong-Hwa Song	34571434	Biomaterials	WB
Weiwei Gui	33115498	Cell Commun Signal	WB

Stockage

Stockage:

Stocker à -20°C. Stable pendant un an après l'expédition.

Tampon de stockage:

PBS avec azoture de sodium à 0,02 % et glycérol à 50 % pH 7,3

L'aliquotage n'est pas nécessaire pour le stockage à -20C

*** Les 20ul contiennent 0,1% de BSA.

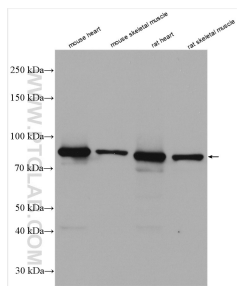
For technical support and original validation data for this product please contact:

T: 1 (888) 4PTGLAB (1-888-478-4522) (toll free in USA), or 1(312) 455-8498 (outside USA)

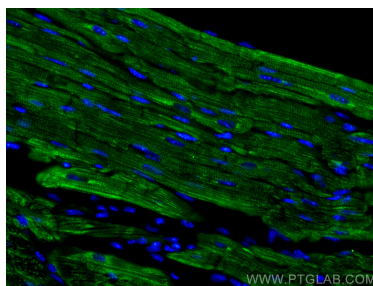
E: proteintech@ptglab.com
W: ptglab.com

This product is exclusively available under Proteintech Group brand and is not available to purchase from any other manufacturer.

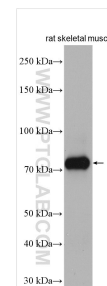
Données de validation sélectionnées



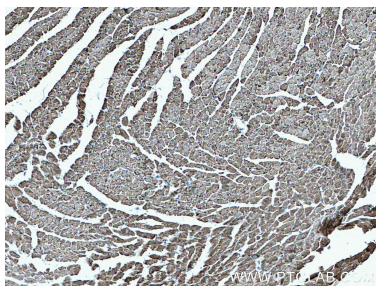
Various lysates were subjected to SDS PAGE followed by western blot with 22170-1-AP (CPT1B-specific antibody) at dilution of 1:5000 incubated at room temperature for 1.5 hours.



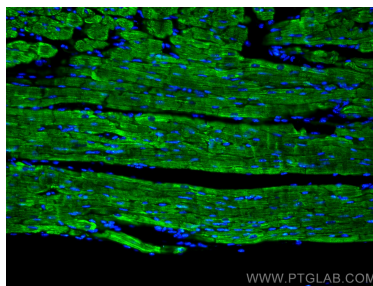
Immunofluorescent analysis of (4% PFA) fixed mouse heart tissue using CPT1B-specific antibody (22170-1-AP) at dilution of 1:200 and CoraLite®488-Conjugated AffiniPure Goat Anti-Rabbit IgG(H+L).



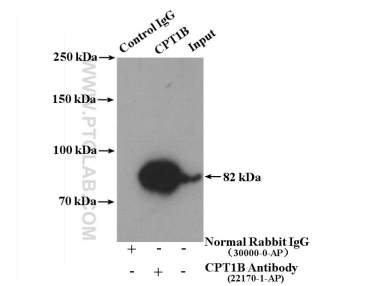
Rat skeletal muscle tissue were subjected to SDS PAGE followed by western blot with 22170-1-AP (CPT1B-specific antibody) at dilution of 1:4000 incubated at room temperature for 1.5 hours.



Immunohistochemical analysis of paraffin-embedded mouse heart tissue slide using 22170-1-AP (CPT1B-specific antibody) at dilution of 1:200 (under 10x lens. Heat mediated antigen retrieval with Tris-EDTA buffer (pH 9.0).



Immunofluorescent analysis of (4% PFA) fixed mouse heart tissue using CPT1B-specific antibody (22170-1-AP) at dilution of 1:200 and CoraLite®488-Conjugated AffiniPure Goat Anti-Rabbit IgG(H+L).



IP result of anti-CPT1B-specific (IP:22170-1-AP, 4ug; Detection:22170-1-AP 1:600) with mouse heart tissue lysate 3600 ug.