

À des fins de recherche uniquement

Anticorps Polyclonal de lapin anti-FOXP3



Numéro de catalogue: 22173-1-AP

Phare

2 Publications

Informations de base

Numéro de catalogue:
22173-1-AP

Taille:
150ul, Concentration: 300 µg/ml by Nanodrop and 200 µg/ml by Bradford method using BSA as the standard;

Hôte:
Lapin

Isotype:
IgG

Immunogen Catalog Number:
AG17827

Numéro d'acquisition GenBank:
BC113401

Identification du gène (NCBI):
50943

Nom complet:
forkhead box P3

MW calculé
431 aa, 47 kDa

MW observés:
47-50 kDa

Méthode de purification:
Purification par affinité contre l'antigène

Dilutions recommandées:
WB 1:500-1:1000

Applications

Applications testées:
WB, ELISA

Demandes citées:
IHC, WB

Spécificité de l'espèce:
Humain, souris

Espèces citées:
Humain, souris

Contrôles positifs:

WB : cellules HEK-293, HEK-293

Informations générales

FOXP3, also named as IPEX, JM2 and Scurfin, is a transcription factor. FOXP3 plays a critical role in the control of immune response. Defects in FOXP3 are the cause of immunodeficiency polyendocrinopathy, enteropathy, X-linked syndrome (IPEX) which also known as X-linked autoimmunity-immunodeficiency syndrome. This antibody is a rabbit polyclonal antibody raised against a peptide mapping within human FOXP3.

Publications notables

Autrice	Pubmed ID	Journal	Application
Shuai Peng	33376516	Exp Ther Med	WB
Qiong Wang	35921211	Oral Dis	IHC

Stockage

Stockage:

Stocker à -20°C. Stable pendant un an après l'expédition.

Tampon de stockage:

PBS avec azoture de sodium à 0,02 % et glycérol à 50 % pH 7,3

L'aliquotage n'est pas nécessaire pour le stockage à -20C

*** Les 20ul contiennent 0,1% de BSA.

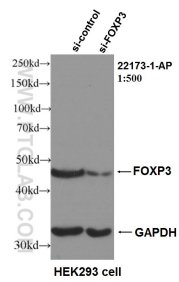
For technical support and original validation data for this product please contact:

T: 1 (888) 4PTGLAB (1-888-478-4522) (toll free in USA), or 1(312) 455-8498 (outside USA)

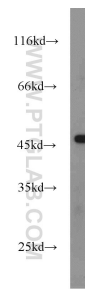
E: proteintech@ptglab.com
W: ptglab.com

This product is exclusively available under Proteintech Group brand and is not available to purchase from any other manufacturer.

Données de validation sélectionnées



WB result of FOXP3 antibody (22173-1-AP, 1:500) with si-Control and si-FOXP3 transfected HEK293 cells.



HEK-293 cells were subjected to SDS PAGE followed by western blot with 22173-1-AP (FOXP3 antibody) at dilution of 1:1000 incubated at room temperature for 1.5 hours.