

À des fins de recherche uniquement

Anticorps Polyclonal de lapin anti-ERC1



Numéro de catalogue: 22211-1-AP

Phare

4 Publications

Informations de base

Numéro de catalogue: 22211-1-AP	Numéro d'acquisition GenBank: BC132782	Méthode de purification: Purification par affinité contre l'antigène
Taille: 150ul, Concentration: 600 µg/ml by Nanodrop and 467 µg/ml by Bradford method using BSA as the standard;	Identification du gène (NCBI): 23085	Dilutions recommandées: WB 1:500-1:2000 IF 1:20-1:200
Hôte: Lapin	Nom complet: ELKS/RAB6-interacting/CAST family member 1	
Isotype: IgG	MW calculé: 1116 aa, 128 kDa	
Immunogen Catalog Number: AG17536	MW observés: 124-135 kDa	

Applications

Applications testées: IF, WB, ELISA	Contrôles positifs: WB : cellules HeLa, cellules COLO 320, cellules Jurkat, tissu testiculaire humain IF : cellules MCF-7,
Demandes citées: CoIP, IF, WB	
Spécificité de l'espèce: Humain	
Espèces citées: Humain, rat	

Informations générales

ERC is an acronym based on previous separate namings of members of this protein family, ELKS, Rab6IP2 and CAST (PMID: 12391317). They are known to bind RIMs, the active zone proteins that regulate neurotransmitter release. ERC1 (ELKS) is an essential regulatory subunit of the IKK complex and likely functions by recruiting IκBα to the complex (PMID: 15218148). Multiple isoforms of ERC1 mRNA are generated by alternative splicing (PMID: 12203787). There are two known splice variants of ERC1 protein that differ at their C termini, ERC1a and ERC1b. ERC1a is ubiquitously expressed, whereas ERC1b is brain-specific (PMID: 12391317; 12923177).

Publications notables

Autrice	Pubmed ID	Journal	Application
Qingyang Liu	29044157	Sci Rep	WB
Lou Fourriere	31142554	J Cell Biol	IF
Ivar Noordstra	35006275	J Cell Sci	WB, CoIP

Stockage

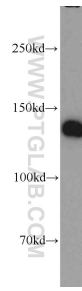
Stockage:
Stocker à -20°C. Stable pendant un an après l'expédition.
Tampon de stockage:
PBS avec azoture de sodium à 0,02 % et glycérol à 50 % pH 7,3
L'aliquotage n'est pas nécessaire pour le stockage à -20C

*** Les 20ul contiennent 0,1% de BSA.

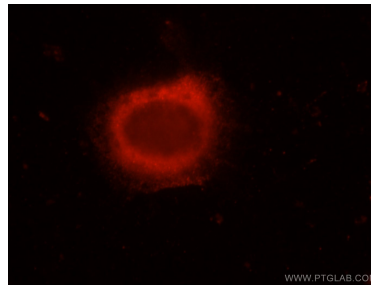
For technical support and original validation data for this product please contact:
T: 1 (888) 4PTGLAB (1-888-478-4522) (toll free in USA), or 1(312) 455-8498 (outside USA)
E: proteintech@ptglab.com
W: ptglab.com

This product is exclusively available under Proteintech Group brand and is not available to purchase from any other manufacturer.

Données de validation sélectionnées



HeLa cells were subjected to SDS PAGE followed by western blot with 22211-1-AP (ERC1 antibody) at dilution of 1:1000 incubated at room temperature for 1.5 hours.



Immunofluorescent analysis of MCF-7 cells, using ERC1 antibody 22211-1-AP at 1:50 dilution and Rhodamine-labeled goat anti-rabbit IgG (red).