

À des fins de recherche uniquement

Anticorps Polyclonal de lapin anti-Cytokeratin 14



Numéro de catalogue: 22221-1-AP

1 Publications

Informations de base

Numéro de catalogue:

22221-1-AP

Taille:

150ul, Concentration: 300 µg/ml by Nanodrop and 233 µg/ml by Bradford method using BSA as the standard;

Hôte:

Lapin

Isotype:

IgG

Immunogen Catalog Number:

AG17559

Numéro d'acquisition GenBank:

BC002690

Identification du gène (NCBI):

3861

Nom complet:

keratin 14

MW calculé

472 aa, 52 kDa

MW observés:

52 kDa

Méthode de purification:

Purification par affinité contre l'antigène

Dilutions recommandées:

WB 1:500-1:2000

IP 0.5-4.0 ug for IP and 1:500-1:2000 for WB

IHC 1:50-1:500

IF 1:50-1:500

Applications

Applications testées:

FC, IF, IHC, IP, WB, ELISA

Demandes citées:

WB

Spécificité de l'espèce:

Humain, souris

Espèces citées:

Humain, Hamster

Remarque-IHC: il est suggéré de démasquer l'antigène avec un tampon de TE buffer pH 9,0; (*) A défaut, 'le démasquage de l'antigène peut être 'effectué avec un tampon citrate pH 6,0.

Contrôles positifs:

WB : tissu cutané de souris,

IP : tissu cutané de souris,

IHC : tissu cutané humain, tissu de cancer du col de l'utérus humain, tissu de cancer du poumon humain, tissu de cancer du sein humain

IF : cellules HepG2,

Informations générales

Keratins are a large family of proteins that form the intermediate filament cytoskeleton of epithelial cells, which are classified into two major sequence types. Type I keratins are a group of acidic intermediate filament proteins, including K9-K23, and the hair keratins Ha1-Ha8. Type II keratins are the basic or neutral counterparts to the acidic type I keratins, including K1-K8, and the hair keratins, Hb1-Hb6. Keratin 14 is a type I cytokeratin. It is usually found as a heterotetramer with keratin 5. Keratins K14 and K5 have long been considered to be biochemical markers of the stratified squamous epithelia, including epidermis. This antibody is specifically against KRT14.

Publications notables

Autrice	Pubmed ID	Journal	Application
S Vijayalingam	24874842	Cancer Gene Ther	WB

Stockage

Stockage:

Stocker à -20°C. Stable pendant un an après l'expédition.

Tampon de stockage:

PBS avec azoture de sodium à 0,02 % et glycérol à 50 % pH 7,3

L'aliquotage n'est pas nécessaire pour le stockage à -20C

*** Les 20ul contiennent 0,1% de BSA.

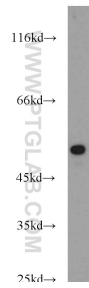
For technical support and original validation data for this product please contact:

T: 1 (888) 4PTGLAB (1-888-478-4522) (toll free in USA), or 1(312) 455-8498 (outside USA)

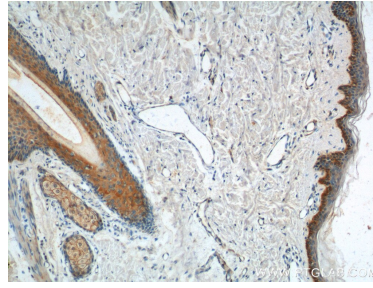
E: proteintech@ptglab.com
W: ptglab.com

This product is exclusively available under Proteintech Group brand and is not available to purchase from any other manufacturer.

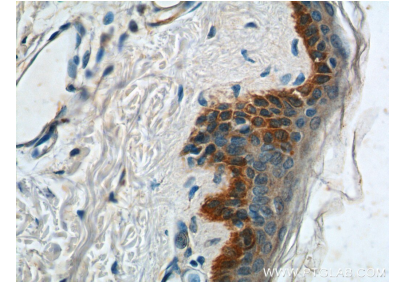
Données de validation sélectionnées



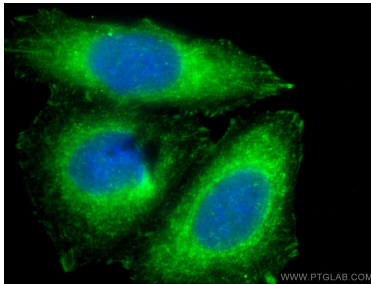
mouse skin tissue were subjected to SDS PAGE followed by western blot with 22221-1-AP (Cytokeratin 14 antibody) at dilution of 1:1000 incubated at room temperature for 1.5 hours.



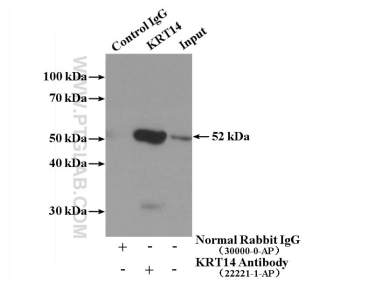
Immunohistochemical analysis of paraffin-embedded human skin tissue slide using 22221-1-AP (Cytokeratin 14 antibody at dilution of 1:200 (under 10x lens).



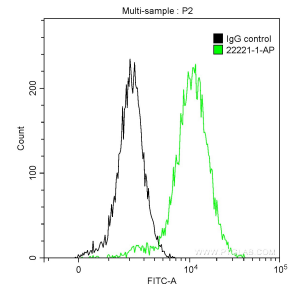
Immunohistochemical analysis of paraffin-embedded human skin tissue slide using 22221-1-AP (Cytokeratin 14 antibody at dilution of 1:200 (under 40x lens).



Immunofluorescent analysis of (-20°C Ethanol) fixed HepG2 cells using 22221-1-AP (Cytokeratin 14 antibody) at dilution of 1:50 and Alexa Fluor 488-conjugated AffiniPure Goat Anti-Rabbit IgG(H+L).



IP Result of anti-Cytokeratin 14 (IP:22221-1-AP, 4ug; Detection:22221-1-AP 1:1000) with mouse skin tissue lysate 3200ug.



1x10⁶ A431 cells were intracellularly stained with 0.2 ug Anti-Human Cytokeratin 14 (22221-1-AP) and CoraLite®488-Conjugated AffiniPure Goat Anti-Rabbit IgG(H+L) at dilution 1:1000 (green), and 0.2 ug Control Antibody. Cells were fixed with 90% MeOH.