

À des fins de recherche uniquement

Anticorps Polyclonal de lapin anti-CEP164



Numéro de catalogue: 22227-1-AP

46 Publications

Informations de base

Numéro de catalogue:

22227-1-AP

Taille:

150ul, Concentration: 900 µg/ml by Nanodrop and 293 µg/ml by Bradford method using BSA as the standard;

Hôte:

Lapin

Isotype:

IgG

Immunogen Catalog Number:

AG17570

Numéro d'acquisition GenBank:

BC000602

Identification du gène (NCBI):

22897

Nom complet:

centrosomal protein 164kDa

MW calculé

1460 aa, 164 kDa

MW observés:

164 kDa

Méthode de purification:

Purification par affinité contre l'antigène

Dilutions recommandées:

WB 1:200-1:1000

IP 0.5-4.0 ug for IP and 1:500-1:1000 for WB

IHC 1:20-1:200

IF 1:200-1:800

Applications

Applications testées:

IF, IHC, IP, WB, ELISA

Demandes citées:

IF, IHC, WB

Spécificité de l'espèce:

canin, Humain

Espèces citées:

Humain, souris

Contrôles positifs:

WB : cellules HEK-293,

IP : cellules RPE1,

IHC : tissu de côlon humain, tissu de cancer du col de l'utérus humain

IF : cellules HeLa, cellules A549, cellules MDCK, cellules PC-3

Remarque-IHC: il est suggéré de démasquer l'antigène avec un tampon de TE buffer pH 9.0; (*) A défaut, le démasquage de l'antigène peut être effectué avec un tampon citrate pH 6.0.

Informations générales

CEP164, also named as KIAA1052 or NPHP15, is a 1460 amino acid protein, which contains 1 WW domain. CEP164 localizes in the microtubule organizing center and is expressed in several cell lines. CEP164 plays a role in microtubule organization and/or maintenance for the formation of primary cilia, a microtubule-based structure that protrudes from the surface of epithelial cells. CEP164 plays a critical role in G2/M checkpoint and nuclear divisions. The expression of CEP164 is normally limited to the mother centriole, and CEP164 can be used as a useful marker for mother centriole.

Publications notables

Autrice	Pubmed ID	Journal	Application
Ana Martin-Hurtado	31554934	Sci Rep	IF
Marine H Laporte	36125182	EMBO J	IF
Louise A Stephen	26386247	Elife	IF

Stockage

Stockage:

Stocker à -20°C. Stable pendant un an après l'expédition.

Tampon de stockage:

PBS avec azotate de sodium à 0,02 % et glycérol à 50 % pH 7,3

L'aliquotage n'est pas nécessaire pour le stockage à -20C

***** Les 20ul contiennent 0,1% de BSA**

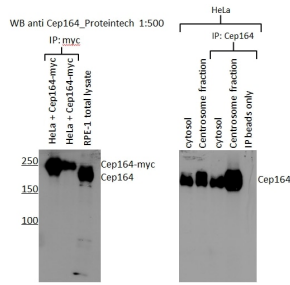
For technical support and original validation data for this product please contact:

T: 1 (888) 4PTGLAB (1-888-478-4522) (toll free in USA), or 1(312) 455-8498 (outside USA)

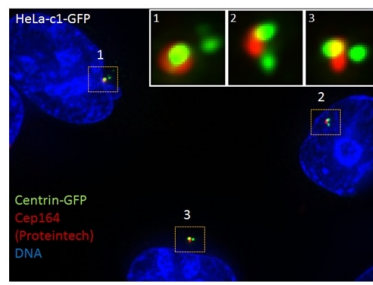
E: proteintech@ptglab.com
W: ptglab.com

This product is exclusively available under Proteintech Group brand and is not available to purchase from any other manufacturer.

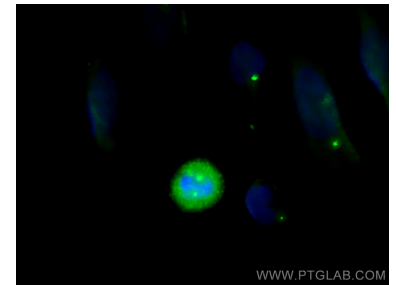
Données de validation sélectionnées



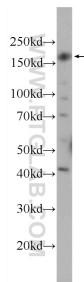
WB results of CEP164 (22227-1-AP, 1:500) with RPE1 cells by Laboratory of Protein Dynamics and Signaling; Center for Cancer Research, National Cancer Institute.



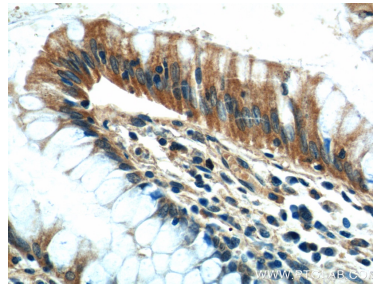
IF results of CEP164 (22227-1-AP, 1:1000) with HeLa cells (1.5% formaldehyde, 10 min RT) by Laboratory of Protein Dynamics and Signaling; Center for Cancer Research, National Cancer Institute.



Immunofluorescent analysis of (-20°C Methanol) fixed HeLa cells using CEP164 antibody (22227-1-AP) at dilution of 1:400 and CoraLite@488-Conjugated AffiniPure Goat Anti-Rabbit IgG(H+L).



HEK-293 cells were subjected to SDS PAGE followed by western blot with 22227-1-AP (CEP164 Antibody) at dilution of 1:300 incubated at room temperature for 1.5 hours.



Immunohistochemical analysis of paraffin-embedded human colon tissue slide using 22227-1-AP (CEP164 Antibody) at dilution of 1:50 (under 40x lens).