

À des fins de recherche uniquement

Anticorps Polyclonal de lapin anti-TLR6



Numéro de catalogue: 22240-1-AP

Phare

8 Publications

Informations de base

Numéro de catalogue:
22240-1-AP

Taille:
150ul, Concentration: 600 µg/ml by
Nanodrop;

Hôte:
Lapin

Isotype:
IgG

Immunogen Catalog Number:
AG17686

Numéro d'acquisition GenBank:
BC111755

Identification du gène (NCBI):
10333

Nom complet:
toll-like receptor 6

MW calculé
480 aa, 56 kDa

MW observés:
95-110 kDa

Méthode de purification:
Purification par affinité contre
l'antigène

Dilutions recommandées:
WB 1:500-1:2000

Applications

Applications testées:
WB, ELISA

Demandes citées:
WB

Spécificité de l'espèce:
Humain, souris

Espèces citées:
Humain, souris

Contrôles positifs:

WB : cellules RAW 264.7, cellules HT-1080, cellules
Jurkat, tissu cérébral humain, tissu de thymus de
souris

Informations générales

TLR6, also known as CD286, belongs to the Toll-like receptor (TLR) family which are important in the innate immune response to pathogens. TLRs are highly conserved from Drosophila to human and share structural and functional similarities. TLR6 can form a heterodimer with TLR2. TLR6 and TLR2 both are recruited to the macrophage phagosome, where they recognize peptidoglycan, a Gram-positive pathogen component (PMID: 11095740). TLR6 interacts with CD36, following CD36 stimulation by oxLDL or amyloid-beta 42, and forms a heterodimer with TLR4. The trimeric complex is internalized and triggers inflammatory response.

Publications notables

Autrice	Pubmed ID	Journal	Application
Xianyang Wang	36174413	Eur J Med Chem	
Xiaoyu Xie	34649530	BMC Med	WB
Cong Li	31885603	Stem Cells Int	WB

Stockage

Stockage:

Stocker à -20°C. Stable pendant un an après l'expédition.

Tampon de stockage:

PBS avec azoture de sodium à 0,02 % et glycérol à 50 % pH 7,3

L'aliquotage n'est pas nécessaire pour le stockage à -20C

*** Les 20ul contiennent 0,1% de BSA.

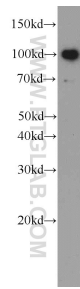
For technical support and original validation data for this product please contact:

T: 1 (888) 4PTGLAB (1-888-478-4522) (toll free
in USA), or 1(312) 455-8498 (outside USA)

E: proteintech@ptglab.com
W: ptglab.com

This product is exclusively available under Proteintech Group brand and is not available to purchase from any other manufacturer.

Données de validation sélectionnées



RAW 264.7 cells were subjected to SDS PAGE followed by western blot with 22240-1-AP (TLR6 antibody) at dilution of 1:1000 incubated at room temperature for 1.5 hours.