

À des fins de recherche uniquement

Anticorps Polyclonal de lapin anti-REST



Numéro de catalogue: 22242-1-AP

Phare

16 Publications

Informations de base

Numéro de catalogue:
22242-1-AP

Taille:
150ul, Concentration: 1000 µg/ml by Nanodrop and 400 µg/ml by Bradford method using BSA as the standard;

Hôte:
Lapin

Isotype:
IgG

Immunogen Catalog Number:
AG17707

Numéro d'acquisition GenBank:
BC132859

Identification du gène (NCBI):

Nom complet:
RE1-silencing transcription factor

MW calculé
1097 aa, 122 kDa

MW observés:
200 kDa

Méthode de purification:
Purification par affinité contre l'antigène

Dilutions recommandées:
WB 1:500-1:3000
IP 0.5-4.0 ug for IP and 1:500-1:2000 for WB
IHC 1:400-1:1600

Applications

Applications testées:
IHC, IP, WB, ELISA

Demandes citées:
CoIP, IF, IHC, WB

Spécificité de l'espèce:
Humain, rat

Espèces citées:
Humain, rat, souris, Hamster

Remarque-IHC: il est suggéré de démasquer l'antigène avec un tampon de TE buffer pH 9,0; (*) À défaut, 'le démasquage de l'antigène peut être 'effectué avec un tampon citrate pH 6,0.

Contrôles positifs:

WB : cellules Raji, cellules HEK-293

IP : cellules HeLa,

IHC : tissu de cancer du sein humain,

Informations générales

REST also named as NRSF or X2 box repressor is a 1097 amino acid protein, which contains 9 C2H2-type zinc fingers. REST as transcriptional repressor binds neuron-restrictive silencer element (NRSE) and represses neuronal gene transcription in non-neuronal cells. Repressor element 1 (RE1) silencing transcription factor (REST), is widely expressed during embryogenesis, and plays a strategic role in terminal neuronal differentiation. The molecular weight of REST is 121 kDa, but REST was detected 200kDa by western blot in our result, which is similar to the one article (PMID: 16764822).

Publications notables

Autrice	Pubmed ID	Journal	Application
Hiroyuki Obata	36185767	Exp Ther Med	IF
Haiwei Zhang	36125121	Elife	IF
Qingzhe Wu	34597132	Sci Adv	

Stockage

Stockage:

Stocker à -20°C. Stable pendant un an après l'expédition.

Tampon de stockage:

PBS avec azoture de sodium à 0,02 % et glycérol à 50 % pH 7,3

L'aliquotage n'est pas nécessaire pour le stockage à -20C

*** Les 20ul contiennent 0,1% de BSA.

For technical support and original validation data for this product please contact:

T: 1 (888) 4PTGLAB (1-888-478-4522) (toll free in USA), or 1(312) 455-8498 (outside USA)

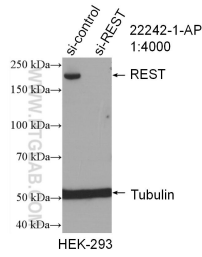
E: proteintech@ptglab.com
W: ptglab.com

This product is exclusively available under Proteintech Group brand and is not available to purchase from any other manufacturer.

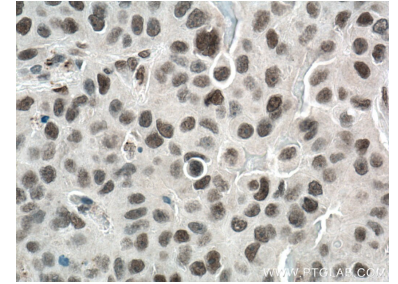
Données de validation sélectionnées



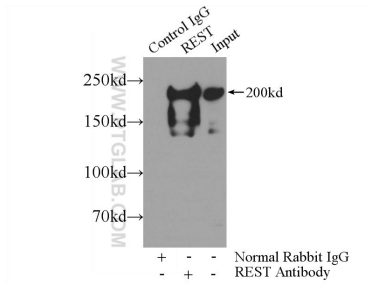
Raji cells were subjected to SDS PAGE followed by western blot with 22242-1-AP (REST antibody) at dilution of 1:1500 incubated at room temperature for 1.5 hours.



WB result of REST antibody (22242-1-AP; 1:4000; incubated at room temperature for 1.5 hours) with sh-Control and sh-REST transfected HEK-293 cells.



Immunohistochemical analysis of paraffin-embedded human breast cancer tissue slide using 22242-1-AP (REST antibody) at dilution of 1:800 (under 40x lens. Heat mediated antigen retrieval with Tris-EDTA buffer (pH 9.0).



IP Result of anti-REST (IP:22242-1-AP, 5ug; Detection:22242-1-AP 1:1000) with HeLa cells lysate 2720ug.