

À des fins de recherche uniquement

# Anticorps Polyclonal de lapin anti-MST1



Numéro de catalogue: 22245-1-AP

Phare

22 Publications

## Informations de base

Numéro de catalogue:  
22245-1-AP

Taille:  
150ul, Concentration: 1000 µg/ml by Nanodrop and 560 µg/ml by Bradford method using BSA as the standard;

Hôte:  
Lapin

Isotype:  
IgG

Immunogen Catalog Number:  
AG17738

Numéro d'acquisition GenBank:  
BC093768

Identification du gène (NCBI):  
6789

Nom complet:  
serine/threonine kinase 4

MW calculé:  
487 aa, 56 kDa

MW observés:  
56 kDa

Méthode de purification:  
Purification par affinité contre l'antigène

Dilutions recommandées:  
WB 1:1000-1:6000  
IP 0.5-4.0 ug for IP and 1:500-1:2000 for WB  
IHC 1:50-1:500  
IF 1:20-1:200

## Applications

Applications testées:  
IF, IHC, IP, WB, ELISA

Demandes citées:  
IF, IHC, IP, WB

Spécificité de l'espèce:  
Humain, rat, souris

Espèces citées:  
Humain, rat, souris

**Remarque-IHC: il est suggéré de démasquer l'antigène avec un tampon de TE buffer pH 9,0; (\*) A défaut, 'le démasquage de l'antigène peut être effectué avec un tampon citrate pH 6,0.**

Contrôles positifs:

WB : cellules HeLa, cellules C2C12, cellules HepG2, cellules Jurkat, cellules Ramos, tissu hépatique de rat, tissu splénique de rat, tissu splénique de souris

IP : cellules HeLa,

IHC : tissu de cancer de la prostate humain,

IF : cellules HepG2,

## Informations générales

Mammalian STE20-like serine-threonine kinase MST1, encoded by the STK4 gene, is a multifunctional protein. MST1 and its closest paralogs MST2 (encoded by the STK3 gene), MST3, and MST4 are members of the Class II Germinal Center Family of Protein Kinases. STK3/4 and LATS1/2 (large tumor suppressor 1 and 2) are core kinase components of the Hippo tumor suppressor pathway in mammals. In the conventional Hippo pathway, the STK3/4 and LATS1/2 signaling cascade phosphorylates and inactivates the transcriptional coactivator YAP1 (yes associated protein 1) and its close paralog WWTR1. YAP1 and WWTR1 do not have DNA binding domains and they exert their biological outputs, such as cell proliferation and survival, by interacting with the TEAD1-4 transcription factors. Lines of evidence have indicated that dysregulation or loss of STK4/Hippo signaling is linked to developmental disorders and carcinogenesis with poor prognosis. STK4 is a stress-induced kinase and it can be activated in response to cell-death inducers. Autophosphorylation of STK4 at Thr183 (Thr180 in STK3) in the activation loop is a key activation mechanism for STK4/3 because phosphorylation of Thr183/180 causes the cleavage of STK4 by caspases under apoptotic conditions. The caspase-cleavage results in a more active STK4 protein (STK4-N, an amino-terminally truncated STK4), which localizes into the nucleus and induces apoptosis through histone modifications and chromatin condensations.

## Publications notables

Autrice	Pubmed ID	Journal	Application
Ting-Ting Zhang	28893403	Tissue Cell	WB,IHC
Qingxu Liu	34678143	Cell	IF,WB
Wenjiao Li	30315205	Cell Death Differ	WB

## Stockage

Stockage:

Stocker à -20°C. Stable pendant un an après l'expédition.

Tampon de stockage:

PBS avec azoture de sodium à 0,02 % et glycérol à 50 % pH 7,3

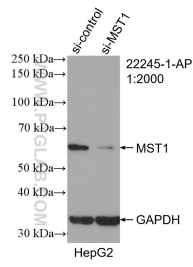
L'aliquotage n'est pas nécessaire pour le stockage à -20C

\*\*\* Les 20ul contiennent 0,1% de BSA.

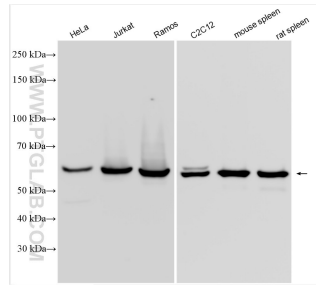
For technical support and original validation data for this product please contact:  
T: 1 (888) 4PTGLAB (1-888-478-4522) (toll free in USA), or 1(312) 455-8498 (outside USA)  
E: proteintech@ptglab.com  
W: ptglab.com

This product is exclusively available under Proteintech Group brand and is not available to purchase from any other manufacturer.

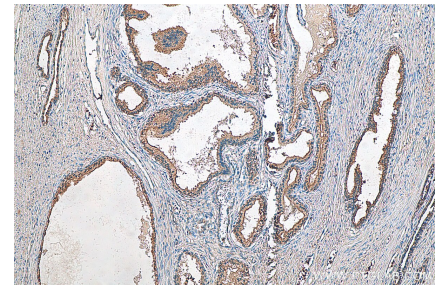
## Données de validation sélectionnées



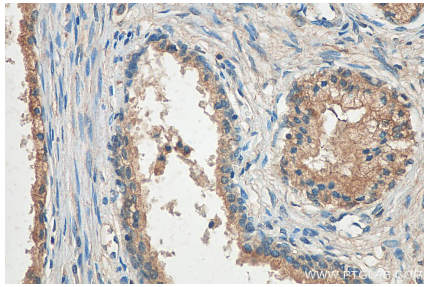
WB result of MST1 antibody (22245-1-AP; 1:2000; incubated at room temperature for 1.5 hours) with sh-Control and sh-MST1 transfected HepG2 cells.



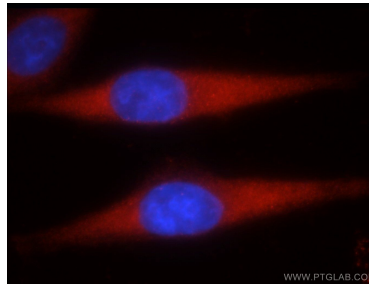
Various lysates were subjected to SDS PAGE followed by western blot with 22245-1-AP (MST1 antibody) at dilution of 1:3000 incubated at room temperature for 1.5 hours.



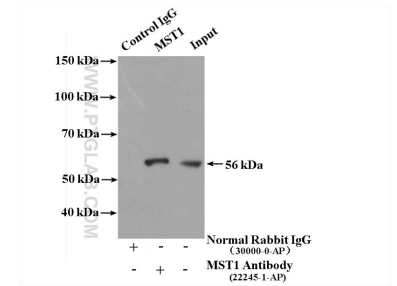
Immunohistochemical analysis of paraffin-embedded human prostate cancer tissue slide using 22245-1-AP (MST1 antibody) at dilution of 1:200 (under 10x lens). Heat mediated antigen retrieval with Tris-EDTA buffer (pH 9.0).



Immunohistochemical analysis of paraffin-embedded human prostate cancer tissue slide using 22245-1-AP (MST1 antibody) at dilution of 1:200 (under 40x lens). Heat mediated antigen retrieval with Tris-EDTA buffer (pH 9.0).



Immunofluorescent analysis of HepG2 cells using 22245-1-AP (MST1 antibody) at dilution of 1:50 and Rhodamine-labeled goat anti-rabbit IgG (red).



IP Result of anti-MST1 (IP:22245-1-AP, 4ug; Detection:22245-1-AP 1:1000) with HeLa cells lysate 2000ug.