

À des fins de recherche uniquement

Anticorps Polyclonal de lapin anti-TBP



Numéro de catalogue: 22246-1-AP

2 Publications

Informations de base

Numéro de catalogue:
22246-1-AP

Taille:
150ul, Concentration: 300 µg/ml by Nanodrop and 187 µg/ml by Bradford method using BSA as the standard;

Hôte:
Lapin

Isotype:
IgG

Immunogen Catalog Number:
AG17740

Numéro d'acquisition GenBank:
BC110341

Identification du gène (NCBI):
6908

Nom complet:
TATA box binding protein

MW calculé:
338 aa, 38 kDa

MW observés:
mouse/rat 33-36 kDa and human 37-43kDa

Méthode de purification:
Purification par affinité contre l'antigène

Dilutions recommandées:
WB 1:500-1:2000
IF 1:20-1:200

Applications

Applications testées:
IF, WB, ELISA

Demandes citées:
WB

Spécificité de l'espèce:
Humain, souris

Espèces citées:
Humain, souris

Contrôles positifs:

WB : cellules Jurkat, cellules COLO 320, cellules HeLa, cellules SKOV-3, tissu de côlon de souris

IF : cellules MCF-7,

Informations générales

TBP, TATA box-binding protein, is a DNA-binding subunit of TFIID, which is a multisubunit complex essential for the expression of most protein-encoding genes. The well-conserved C-terminal domains of 180 aa is both necessary and sufficient for interaction with DNA and for assembly of the basal transcription apparatus. The N terminus of TBP modulates the DNA-binding activity of the C terminus of the protein. Once binds to the TATA box mediated by TBP, TFIID initiate the transcription step of the pre-initiation complex (PIC), playing a role in the activation of eukaryotic genes transcribed by RNA polymerase II. This is a rabbit polyclonal antibody raised against part of N-terminal chain of human TBP, and specially recognize a ~46 kDa band.

Publications notables

Autrice	Pubmed ID	Journal	Application
Qingye Li	27748821	Mol Med Rep	WB
Hiroyuki Minemura	33713004	Breast Cancer	WB

Stockage

Stockage:

Stocker à -20°C. Stable pendant un an après l'expédition.

Tampon de stockage:

PBS avec azoture de sodium à 0,02 % et glycérol à 50 % pH 7,3

L'aliquotage n'est pas nécessaire pour le stockage à -20C

*** Les 20ul contiennent 0,1% de BSA.

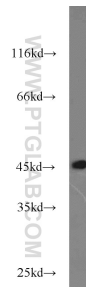
For technical support and original validation data for this product please contact:

T: 1 (888) 4PTGLAB (1-888-478-4522) (toll free in USA), or 1(312) 455-8498 (outside USA)

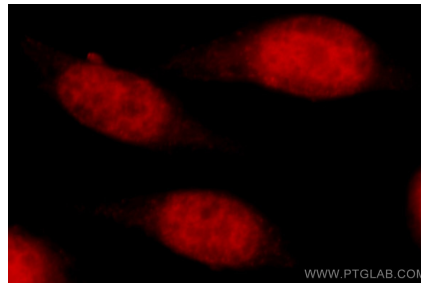
E: proteintech@ptglab.com
W: ptglab.com

This product is exclusively available under Proteintech Group brand and is not available to purchase from any other manufacturer.

Données de validation sélectionnées



Jurkat cells were subjected to SDS PAGE followed by western blot with 22246-1-AP (TBP antibody) at dilution of 1:1000 incubated at room temperature for 1.5 hours.



Immunofluorescent analysis of MCF-7 cells, using TBP antibody 22246-1-AP at 1:50 dilution and Rhodamine-labeled goat anti-rabbit IgG (red).