

À des fins de recherche uniquement

Anticorps Polyclonal de lapin anti-RBM15B



Numéro de catalogue: 22249-1-AP

Phare

8 Publications

Informations de base

Numéro de catalogue:
22249-1-AP

Taille:
150ul, Concentration: 900 µg/ml by Nanodrop and 267 µg/ml by Bradford method using BSA as the standard;

Hôte:
Lapin

Isotype:
IgG

Immunogen Catalog Number:
AG17744

Numéro d'acquisition GenBank:
BC001367

Identification du gène (NCBI):
29890
Nom complet:
RNA binding motif protein 15B

MW calculé
890 aa, 97 kDa
MW observés:
100-120 kDa, 70 kDa

Méthode de purification:
Purification par affinité contre l'antigène

Dilutions recommandées:
WB 1:500-1:3000
IP 0.5-4.0 ug for IP and 1:500-1:1000 for WB

Applications

Applications testées:
IP, WB, ELISA

Demandes citées:
IHC, RIP, WB

Spécificité de l'espèce:
Humain, rat, souris

Espèces citées:
Humain, souris

Contrôles positifs:

WB : cellules HeLa, cellules HEK-293, tissu cérébral de souris

IP : cellules HeLa,

Informations générales

RBM15B, one members of the SPEN (Split-end) family of proteins, have repressor function in several signaling pathways and may bind to RNA through interaction with spliceosome components. Present polyclonal anti-RBM15B antibody was produced by immunizing animals with C-terminus of RBM15B, which homolog with a short form of RBM15B(563aa, ~70kDa), thus this antibody can recognize full length of RBM15B(~100kDa) and splice-one(70kDa)

Publications notables

Autrice	Pubmed ID	Journal	Application
He Huang	32847866	eNeuro	WB
Elodie Villa	33756106	Mol Cell	WB
Wenqi Xu	33505026	Nature	WB

Stockage

Stockage:

Stocker à -20°C. Stable pendant un an après l'expédition.

Tampon de stockage:

PBS avec azoture de sodium à 0,02 % et glycérol à 50 % pH 7,3

L'aliquotage n'est pas nécessaire pour le stockage à -20C

*** Les 20ul contiennent 0,1% de BSA.

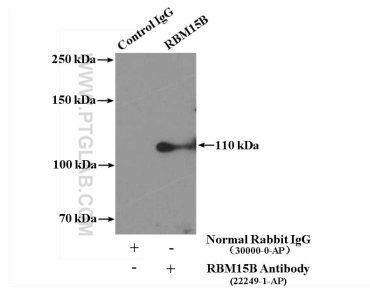
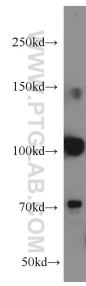
For technical support and original validation data for this product please contact:

T: 1 (888) 4PTGLAB (1-888-478-4522) (toll free in USA), or 1(312) 455-8498 (outside USA)

E: proteintech@ptglab.com
W: ptglab.com

This product is exclusively available under Proteintech Group brand and is not available to purchase from any other manufacturer.

Données de validation sélectionnées



HeLa cells were subjected to SDS PAGE followed by western blot with 22249-1-AP (RBM15B antibody) at dilution of 1:2000 incubated at room temperature for 1.5 hours.

IP Result of anti-RBM15B (IP:22249-1-AP, 4ug; Detection:22249-1-AP 1:500) with HeLa cells lysate 2500ug.