

À des fins de recherche uniquement

Anticorps Polyclonal de lapin anti-PAX8



Numéro de catalogue: 22255-1-AP

Informations de base

Numéro de catalogue:

22255-1-AP

Taille:

150ul

Hôte:

Lapin

Isotype:

IgG

Immunogen Catalog Number:

AG17759

Numéro d'acquisition GenBank:

BC001060

Identification du gène (NCBI):

7849

Nom complet:

paired box 8

MW calculé

450 aa, 48 kDa

Méthode de purification:

Purification par affinité contre l'antigène

Applications

Applications testées:

WB, ELISA

Spécificité de l'espèce:

Humain

Informations générales

PAX8 is a member of the paired box (PAX) family of transcription factors, typically containing a paired box domain and a paired-type homeodomain. It is expressed during organogenesis of the thyroid gland, kidney and Mullerian system. It is thought to regulate the expression of Wilms tumor suppressor (WT1) gene and mutations in PAX8 have been associated with Wilms tumor cells, thyroid and ovarian carcinomas. PAX8 is a useful marker in distinguishing ovarian carcinomas from mammary carcinomas (PMID: 18724243). PAX8 is expressed in a high percentage of ovarian serous, endometrioid, and clear cell carcinomas, but only rarely in primary ovarian mucinous adenocarcinomas.

PAX8 has 5 isoforms with calculated MW 31kd, 34kd, 41kd, 43kd and 48kd. And there is a 60kd band corresponding to the electrophoretic mobility of PAX8 (PMID:15650356). Proteintech's 10336-1-AP antibody has cross-reactivities with the other PAX family members.

Stockage

Stockage:

Stocker à -20°C. Stable pendant un an après l'expédition.

Tampon de stockage:

PBS avec azoture de sodium à 0,02 % et glycérol à 50 % pH 7,3

L'aliquotage n'est pas nécessaire pour le stockage à -20C

*** Les 20ul contiennent 0,1% de BSA.

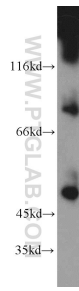
For technical support and original validation data for this product please contact:

T: 1 (888) 4PTGLAB (1-888-478-4522) (toll free in USA), or 1(312) 455-8498 (outside USA)

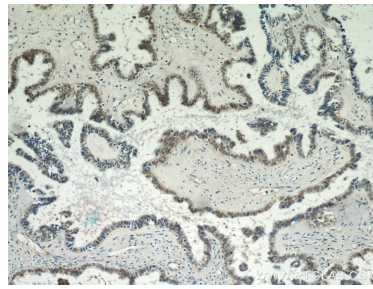
E: proteintech@ptglab.com
W: ptglab.com

This product is exclusively available under Proteintech Group brand and is not available to purchase from any other manufacturer.

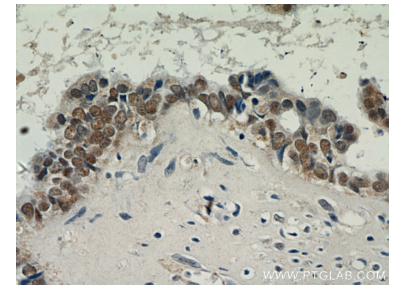
Données de validation sélectionnées



A2780 cells were subjected to SDS PAGE followed by western blot with 22255-1-AP (PAX8 antibody) at dilution of 1:1000 incubated at room temperature for 1.5 hours.



Immunohistochemical analysis of paraffin-embedded human ovary tumor using 22255-1-AP (PAX8 antibody) at dilution of 1:100 (under 10x lens).



Immunohistochemical analysis of paraffin-embedded human ovary tumor using 22255-1-AP (PAX8 antibody) at dilution of 1:100 (under 40x lens).