

À des fins de recherche uniquement

Anticorps Polyclonal de lapin anti-ASF1A-specific



Numéro de catalogue: 22259-1-AP

Phare

1 Publications

Informations de base

Numéro de catalogue:
22259-1-AP

Taille:
150ul, Concentration: 1000 µg/ml by
Nanodrop and 493 µg/ml by Bradford
method using BSA as the standard;

Hôte:
Lapin

Isotype:
IgG

Immunogen Catalog Number:
AG17764

Numéro d'acquisition GenBank:
BC010878

Identification du gène (NCBI):
25842
Nom complet:
ASF1 anti-silencing function 1
homolog A (S. cerevisiae)

MW calculé
204 aa, 23 kDa

MW observés:
20-23 kDa

Méthode de purification:
Purification par affinité contre
l'antigène

Dilutions recommandées:
WB 1:500-1:2000
IF 1:50-1:500

Applications

Applications testées:
IF, WB, ELISA

Demandes citées:
IF, WB

Spécificité de l'espèce:
Humain, rat, souris

Espèces citées:
Humain

Contrôles positifs:

WB : cellules NIH/3T3, cellules HeLa

IF : cellules NIH/3T3,

Informations générales

This gene encodes a member of the H3/H4 family of histone chaperone proteins and is similar to the anti-silencing function-1 gene in yeast. The protein is a key component of a histone donor complex that functions in nucleosome assembly. It interacts with histones H3 and H4, and functions together with a chromatin assembly factor during DNA replication and repair. This antibody is specific to the 23kd ASF1A protein.

Publications notables

Autrice	Pubmed ID	Journal	Application
Sumin Feng	35177609	Nat Commun	WB,IF

Stockage

Stockage:

Stocker à -20°C. Stable pendant un an après l'expédition.

Tampon de stockage:

PBS avec azoture de sodium à 0,02 % et glycérol à 50 % pH 7,3

L'aliquotage n'est pas nécessaire pour le stockage à -20C

*** Les 20ul contiennent 0,1% de BSA.

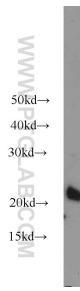
For technical support and original validation data for this product please contact:

T: 1 (888) 4PTGLAB (1-888-478-4522) (toll free
in USA), or 1(312) 455-8498 (outside USA)

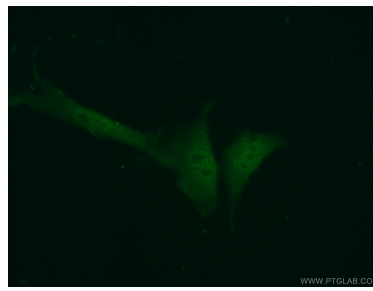
E: proteintech@ptglab.com
W: ptglab.com

This product is exclusively available under Proteintech Group brand and is not available to purchase from any other manufacturer.

Données de validation sélectionnées



NIH/3T3 cells were subjected to SDS PAGE followed by western blot with 22259-1-AP (ASF1A antibody) at dilution of 1:1000 incubated at room temperature for 1.5 hours.



Immunofluorescent analysis of (10% Formaldehyde) fixed NIH/3T3 cells using 22259-1-AP (ASF1A antibody) at dilution of 1:50 and Alexa Fluor 488-conjugated AffiniPure Goat Anti-Rabbit IgG(H+L).