

À des fins de recherche uniquement

Anticorps Polyclonal de lapin anti-CC2D2A



Numéro de catalogue: 22293-1-AP

3 Publications

Informations de base

Numéro de catalogue: 22293-1-AP	Numéro d'acquisition GenBank: NM_020785	Méthode de purification: Purification par affinité contre l'antigène
Taille: 150ul , Concentration: 1000 µg/ml by Nanodrop;	Identification du gène (NCBI): 57545	Dilutions recommandées: WB 1:1000-1:4000 IHC 1:20-1:200 IF 1:20-1:200
Hôte: Lapin	Nom complet: coiled-coil and C2 domain containing 2A	
Isotype: IgG	MW calculé: 186 kDa	
	MW observés: 190 kDa	

Applications

Applications testées:

IF, IHC, WB, ELISA

Demandes citées:

IF, WB

Spécificité de l'espèce:

Humain, rat, souris

Espèces citées:

Humain

Remarque-IHC: il est suggéré de démasquer l'antigène avec un tampon de TE buffer pH 9,0; (*) À défaut, le démasquage de l'antigène peut être effectué avec un tampon citrate pH 6,0.

Contrôles positifs:

WB : tissu cérébral de souris,

IHC : tissu de cancer du poumon humain,

IF : cellules hTERT-RPE1,

Informations générales

CC2D2A, also named as KIAA1345, may be involved in cilia formation. CC2D2A encodes a protein with similar overall structure to RPGRI1, including coiled-coil domains, a C2 domain, and an overlapping centrosomal protein-related domain. CC2D2A physically interacts with CEP290, and loss of Cc2d2a function in the zebrafish sentinel mutant results in abnormal body shape and pronephric (kidney) cysts that is strongly exacerbated by knockdown of Cep290 function. (PMID:19778711) Defects in CC2D2A are the cause of Meckel syndrome type 6 (MKS6). Defects in CC2D2A are the cause of Joubert syndrome type 9 (JBT59). The antibody is specific to CC2D2A.

Publications notables

Autrice	Pubmed ID	Journal	Application
Quynh P H Nguyen	33038334	Dev Cell	IF
Daimin Xiao	27959436	Mol Med Rep	
Sachiko Miyamoto	36970932	Ann Hum Genet	WB

Stockage

Stockage:

Stocker à -20°C. Stable pendant un an après l'expédition.

Tampon de stockage:

PBS avec azoture de sodium à 0,02 % et glycérol à 50 % pH 7,3

L'aliquotage n'est pas nécessaire pour le stockage à -20C

*** Les 20ul contiennent 0,1% de BSA.

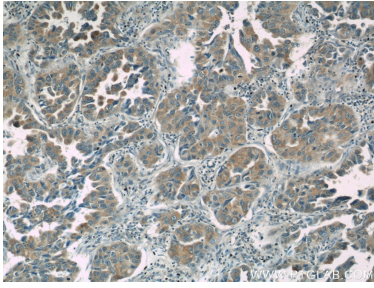
For technical support and original validation data for this product please contact:

T: 1 (888) 4PTGLAB (1-888-478-4522) (toll free in USA), or 1(312) 455-8498 (outside USA)

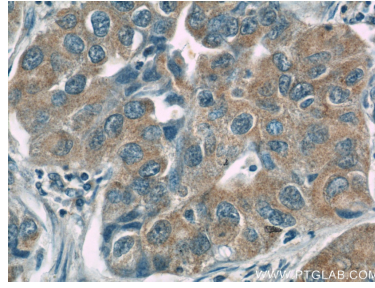
E: proteintech@ptglab.com
W: ptglab.com

This product is exclusively available under Proteintech Group brand and is not available to purchase from any other manufacturer.

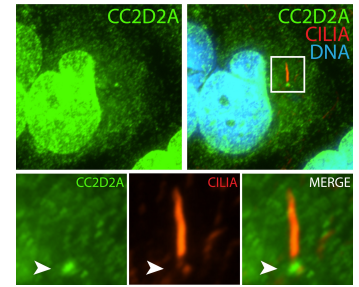
Données de validation sélectionnées



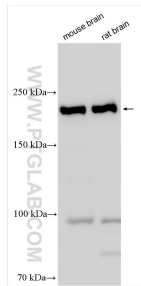
Immunohistochemical analysis of paraffin-embedded human lung cancer slide using 22293-1-AP (CC2D2A Antibody) at dilution of 1:50 (under 10x lens).



Immunohistochemical analysis of paraffin-embedded human lung cancer slide using 22293-1-AP (CC2D2A Antibody) at dilution of 1:50 (under 40x lens).



IF result (strong nucleus and the base stain) of anti-CC2D2A (22293-1-AP, 1:50) with serum-starved hTERT-RPE1 (MeOH fixed) by Dr. Moshe Kim.



Various lysates were subjected to SDS PAGE followed by western blot with 22293-1-AP (CC2D2A antibody) at dilution of 1:2000 incubated at room temperature for 1.5 hours.