

À des fins de recherche uniquement

# Anticorps Polyclonal de lapin anti-RCC1



Numéro de catalogue: 22335-1-AP

1 Publications

## Informations de base

Numéro de catalogue:

22335-1-AP

Taille:

150ul, Concentration: 600 µg/ml by Nanodrop and 267 µg/ml by Bradford method using BSA as the standard;

Hôte:

Lapin

Isotype:

IgG

Immunogen Catalog Number:

AG17809

Numéro d'acquisition GenBank:

BC010067

Identification du gène (NCBI):

1104

Nom complet:

regulator of chromosome condensation 1

MW calculé

421 aa, 45 kDa

MW observés:

45-50 kDa

Méthode de purification:

Purification par affinité contre l'antigène

Dilutions recommandées:

WB 1:1000-1:5000

IP 0.5-4.0 ug for IP and 1:500-1:3000 for WB

IHC 1:50-1:500

IF 1:20-1:200

## Applications

Applications testées:

IF, IHC, IP, WB, ELISA

Demandes citées:

IHC

Spécificité de l'espèce:

Humain, rat, souris

Espèces citées:

Humain

**Remarque-IHC: il est suggéré de démasquer l'antigène avec un tampon de TE buffer pH 9,0; (\*) A défaut, le démasquage de l'antigène peut être effectué avec un tampon citrate pH 6,0.**

Contrôles positifs:

WB : cellules SH-SY5Y, cellules HepG2, tissu de côlon de rat, tissu de côlon de souris

IP : cellules HeLa,

IHC : tissu testiculaire de souris, tissu d'intestin grêle humain, tissu testiculaire humain

IF : cellules HepG2,

## Informations générales

CHC1, also named as RCC1, promotes the exchange of ran-bound gdp by gtp. It is involved in the regulation of onset of chromosome condensation in the S-phase. Phosphorylation of RCC1 on serines located in or near its nuclear localization signal activates RCC1 to generate RanGTP on mitotic chromosomes, which is required for spindle assembly and chromosome segregation. This antibody is a rabbit polyclonal antibody raised against full length RCC1 of human origin.

## Publications notables

Autrice	Pubmed ID	Journal	Application
Yuxiang Deng	34924821	Pathol Oncol Res	IHC

## Stockage

Stockage:

Stocker à -20°C. Stable pendant un an après l'expédition.

Tampon de stockage:

PBS avec azoture de sodium à 0,02 % et glycérol à 50 % pH 7,3

L'aliquotage n'est pas nécessaire pour le stockage à -20C

\*\*\* Les 20ul contiennent 0,1% de BSA.

For technical support and original validation data for this product please contact:

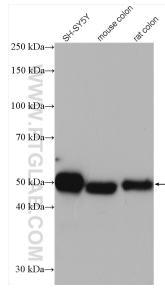
T: 1 (888) 4PTGLAB (1-888-478-4522) (toll free in USA), or 1(312) 455-8498 (outside USA)

E: [proteintech@ptglab.com](mailto:proteintech@ptglab.com)

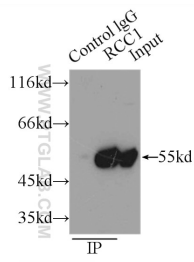
W: [ptglab.com](http://ptglab.com)

This product is exclusively available under Proteintech Group brand and is not available to purchase from any other manufacturer.

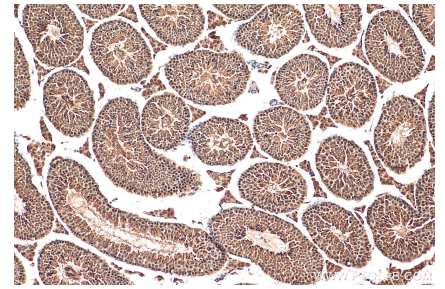
## Données de validation sélectionnées



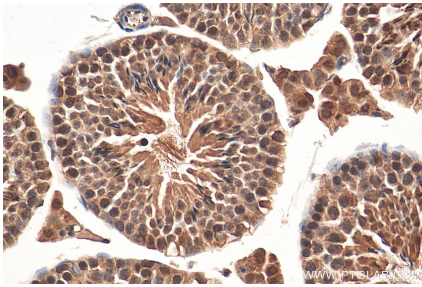
Various lysates were subjected to SDS PAGE followed by western blot with 22335-1-AP (RCC1 antibody) at dilution of 1:2500 incubated at room temperature for 1.5 hours.



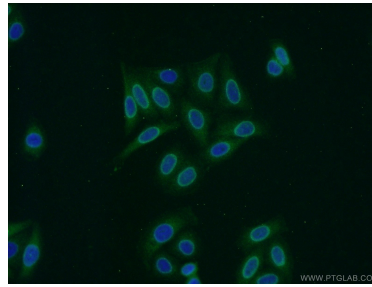
IP Result of anti-RCC1 (IP:22335-1-AP, 3ug; Detection:22335-1-AP 1:1500) with HeLa cells lysate 3000ug.



Immunohistochemical analysis of paraffin-embedded mouse testis tissue slide using 22335-1-AP (RCC1 antibody) at dilution of 1:200 (under 10x lens). Heat mediated antigen retrieval with Tris-EDTA buffer (pH 9.0).



Immunohistochemical analysis of paraffin-embedded mouse testis tissue slide using 22335-1-AP (RCC1 antibody) at dilution of 1:200 (under 40x lens). Heat mediated antigen retrieval with Tris-EDTA buffer (pH 9.0).



Immunofluorescent analysis of HepG2 cells using 22335-1-AP (RCC1 antibody) at dilution of 1:50 and Alexa Fluor 488-conjugated AffiniPure Goat Anti-Rabbit IgG(H+L).