

À des fins de recherche uniquement

Anticorps Polyclonal de lapin anti-P glycoprotein



Numéro de catalogue: 22336-1-AP

65 Publications

Informations de base

Numéro de catalogue:
22336-1-AP

Taille:
150ul, Concentration: 600 µg/ml by
Nanodrop;

Hôte:
Lapin

Isotype:
IgG

Immunogen Catalog Number:
AG17811

Numéro d'acquisition GenBank:
BC130424

Identification du gène (NCBI):
5243

Nom complet:
ATP-binding cassette, sub-family B
(MDR/TAP), member 1

MW calculé
1280 aa, 142 kDa

MW observés:
130-150 kDa

Méthode de purification:
Purification par affinité contre
l'antigène

Dilutions recommandées:
WB 1:500-1:1000
IP 0.5-4.0 ug for IP and 1:200-1:1000
for WB
IHC 1:50-1:500

Applications

Applications testées:
IHC, IP, WB, ELISA

Demandes citées:
CoIP, FC, IF, IHC, IP, WB

Spécificité de l'espèce:
Humain, souris

Espèces citées:
Humain, souris

Contrôles positifs:

WB: cellules HeLa non bouillies, cellules HepG2 non bouillies

IP: tissu placentaire humain,

IHC: tissu de cancer du foie humain, tissu rénal humain

Remarque-IHC: il est suggéré de démasquer l'antigène avec un tampon de TE buffer pH 9,0; (*) À défaut, le démasquage de l'antigène peut être effectué avec un tampon citrate pH 6,0.

Informations générales

ABCB1 (also known as P-gp/ P-glycoprotein, MDR1/multidrug-resistance 1) is a plasma membrane protein first discovered in multidrug resistant tumor cells. ABCB1 can extrude a large number of medically relevant compounds from cells and causes drug resistance. ABCB1 is expressed in a variety of human cancers as well as normal tissues including brain, and placenta. Overexpression of ABCB1 correlates with a negative prognosis in several types of cancer. For optimal WB detection with 22336-1-AP, we recommend to avoid boiling the sample after lysis.

Publications notables

Autrice	Pubmed ID	Journal	Application
Kaili Liu	33007707	Transl Oncol	WB,IF,IHC
Dongya Chai	32963175	Biol Pharm Bull	WB
Y Q Jiang	27706681	Genet Mol Res	WB

Stockage

Stockage:

Stocker à -20°C. Stable pendant un an après l'expédition.

Tampon de stockage:

PBS avec azotate de sodium à 0,02 % et glycérol à 50 % pH 7,3

L'aliquotage n'est pas nécessaire pour le stockage à -20C

*** Les 20ul contiennent 0,1% de BSA.

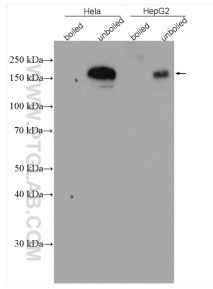
For technical support and original validation data for this product please contact:

T: 1 (888) 4PTGLAB (1-888-478-4522) (toll free in USA), or 1(312) 455-8498 (outside USA)

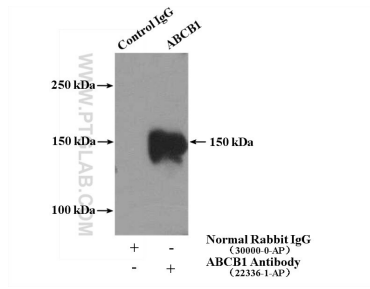
E: proteintech@ptglab.com
W: ptglab.com

This product is exclusively available under Proteintech Group brand and is not available to purchase from any other manufacturer.

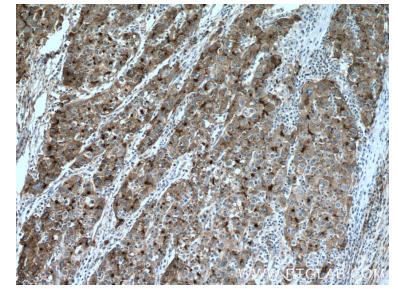
Données de validation sélectionnées



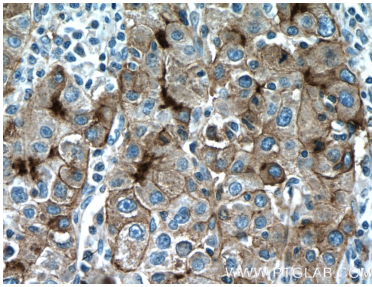
Various lysates were subjected to SDS PAGE followed by western blot with 22336-1-AP (P glycoprotein antibody) at dilution of 1:500 incubated at room temperature for 1.5 hours.



IP Result of anti-P glycoprotein (IP:22336-1-AP, 4ug; Detection:22336-1-AP 1:300) with human placenta tissue lysate 4000ug.



Immunohistochemical analysis of paraffin-embedded human liver cancer tissue slide using 22336-1-AP (P glycoprotein antibody at dilution of 1:500 (under 10x lens). Heat mediated antigen retrieval with Tris-EDTA buffer (pH 9.0).



Immunohistochemical analysis of paraffin-embedded human liver cancer tissue slide using 22336-1-AP (P glycoprotein antibody at dilution of 1:500 (under 40x lens). Heat mediated antigen retrieval with Tris-EDTA buffer (pH 9.0).