

À des fins de recherche uniquement

Anticorps Polyclonal de lapin anti-TCF4



Numéro de catalogue: 22337-1-AP

Phare

43 Publications

Informations de base

Numéro de catalogue: 22337-1-AP	Numéro d'acquisition GenBank: BC125084	Méthode de purification: Purifié par affinité contre l'antigène
Taille: 150ul, Concentration: 600 µg/ml by Nanodrop;	Identification du gène (NCBI): 6925	Dilutions recommandées: WB 1:5000-1:50000 IP 0.5-4.0 ug for IP and 1:500-1:1000 for WB
Hôte: Lapin	Nom complet: transcription factor 4	IHC 1:50-1:500 IF 1:50-1:500
Isotype: IgG	MW calculé: 671 aa, 72 kDa	
Immunogen Catalog Number: AG17813	MW observés: 72 kDa	

Applications

Applications testées:

IF, IHC, IP, WB, ELISA

Demandes citées:

ChIP, CoIP, IF, IHC, IP, WB

Spécificité de l'espèce:

Humain

Espèces citées:

Drosophile, Humain

Remarque-IHC: il est suggéré de démasquer l'antigène avec un tampon de TE buffer pH 9.0; (*) A défaut, le démasquage de l'antigène peut être effectué avec un tampon citrate pH 6,0.

Contrôles positifs:

WB : cellules Caco-2, cellules K-562

IP : tissu pulmonaire de souris,

IHC : tissu testiculaire humain, tissu cérébral de souris

IF : tissu de muscle squelettique de souris,

Informations générales

Transcription factor 4 (TCF4), also known as SEF2, ITF2, E2-2, and ME2, binds to the immunoglobulin enhancer Mu-E5/KE5-motif. Involved in the initiation of neuronal differentiation. Activates transcription by binding to the E box (5'-CANNTG-3'). Binds to the E-box present in the somatostatin receptor 2 initiator element (SSTR2-1NR) to activate transcription. By similarity. Human TCF4 mRNA expression is particularly high in the brain. Usage of numerous 5' exons of the human TCF4 gene potentially yields in TCF4 protein isoforms with 18 different N-termini. In addition, the diversity of isoforms is increased by alternative splicing of several internal exons. Some isoforms contain a bipartite nuclear localization signal and are exclusively nuclear, whereas distribution of other isoforms relies on heterodimerization partners. Preferentially binds to either 5'-ACANNTGT-3' or 5'-CCANNTGG-3'. TCF4 has several splicing isoforms that are expressed differentially in tissues and during cancer progression (15547706, 12796377). The scope of molecular weight of several isoforms is about 60-90 kDa (21789225).

Publications notables

Autrice	Pubmed ID	Journal	Application
Qiuzhen Wang	36232509	Int J Mol Sci	WB
Yi-Fan Tan	36127329	Cell Death Discov	CoIP, WB
Han Xiao	31572009	Cancer Manag Res	WB

Stockage

Stockage:

Stocker à -20°C. Stable pendant un an après l'expédition.

Tampon de stockage:

PBS avec azoture de sodium à 0,02 % et glycérol à 50 % pH 7,3

L'aliquotage n'est pas nécessaire pour le stockage à -20°C

***** Les 20ul contiennent 0,1% de BSA**

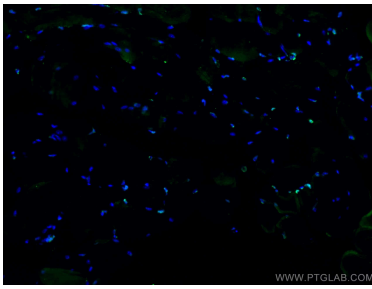
For technical support and original validation data for this product please contact:

T: 1 (888) 4PTGLAB (1-888-478-4522) (toll free in USA), or 1(312) 455-8498 (outside USA)

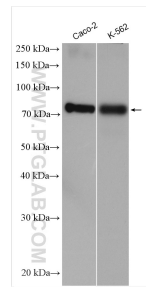
E: proteintech@ptglab.com
W: ptglab.com

This product is exclusively available under Proteintech Group brand and is not available to purchase from any other manufacturer.

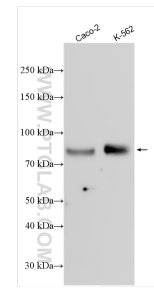
Données de validation sélectionnées



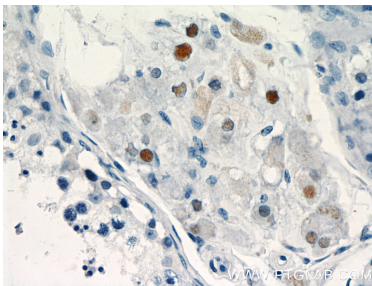
Immunofluorescent analysis of (4% PFA) fixed mouse skeletal muscle tissue using 22337-1-AP (TCF4 antibody) at dilution of 1:200 and CoraLite488-Conjugated AffiniPure Goat Anti-Rabbit IgG(H+L).



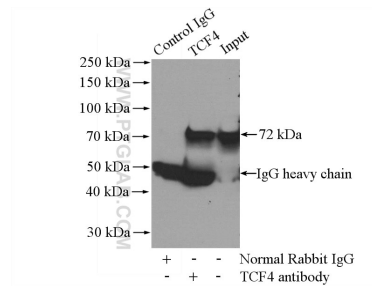
Various lysates were subjected to SDS PAGE followed by western blot with 22337-1-AP (TCF4 antibody) at dilution of 1:8000 incubated at room temperature for 1.5 hours.



Various lysates were subjected to SDS PAGE followed by western blot with 22337-1-AP (TCF4 antibody) at dilution of 1:20000 incubated at room temperature for 1.5 hours.



Immunohistochemical analysis of paraffin-embedded human testis slide using 22337-1-AP (TCF4 Antibody) at dilution of 1:200.



IP Result of anti-TCF4 (IP:22337-1-AP, 4ug; Detection:22337-1-AP 1:500) with mouse lung tissue lysate 4000ug.