

À des fins de recherche uniquement

Anticorps Polyclonal de lapin anti-BTG2



Numéro de catalogue: 22339-1-AP

Phare

6 Publications

Informations de base

Numéro de catalogue:
22339-1-AP

Taille:
150ul, Concentration: 350 µg/ml by Nanodrop and 260 µg/ml by Bradford method using BSA as the standard;

Hôte:
Lapin

Isotype:
IgG

Immunogen Catalog Number:
AG17819

Numéro d'acquisition GenBank:
BC105949

Identification du gène (NCBI):
7832

Nom complet:
BTG family, member 2

MW calculé
158 aa, 17 kDa

Méthode de purification:
Purification par affinité contre l'antigène

Dilutions recommandées:
IHC 1:50-1:500
IF 1:200-1:800

Applications

Applications testées:
FC, IF, IHC, ELISA

Demandes citées:
IHC, WB

Spécificité de l'espèce:
Humain, souris

Espèces citées:
Humain, souris

Remarque-IHC: il est suggéré de démasquer l'antigène avec un tampon de TE buffer pH 9,0; (*) A défaut, 'le démasquage de l'antigène peut être effectué avec un tampon citrate pH 6,0.

Contrôles positifs:

IHC : tissu d'intestin grêle humain, tissu rénal humain

IF : cellules Neuro-2a,

Informations générales

Protein BTG2, the anti-proliferative human homolog of murine Pc3/Tis21, belongs to the BTG/Tob family. This family has structurally related proteins that appear to have anti-proliferative properties. It has been demonstrated that BTG2 is p53-inducible and is involved in cell cycle control and cellular response to DNA damage (PMID: 8944033). As a transcriptional co-regulator, BTG2 has been shown to interact with CAF1 and POP2, and works as a co-activator of ERα-mediated transcription via a CCR4-like complex (PMID: 18974182).

Publications notables

Autrice	Pubmed ID	Journal	Application
Shi Li	31885582	J Oncol	WB
Chen-Song Huang	29098552	Dig Dis Sci	IHC
Aitao Nai	35372503	Front Mol Biosci	WB

Stockage

Stockage:

Stocker à -20°C. Stable pendant un an après l'expédition.

Tampon de stockage:

PBS avec azoture de sodium à 0,02 % et glycérol à 50 % pH 7,3

L'aliquotage n'est pas nécessaire pour le stockage à -20C

*** Les 20ul contiennent 0,1% de BSA.

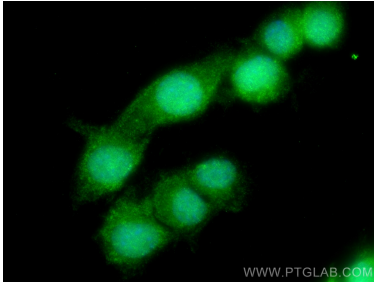
For technical support and original validation data for this product please contact:

T: 1 (888) 4PTGLAB (1-888-478-4522) (toll free in USA), or 1(312) 455-8498 (outside USA)

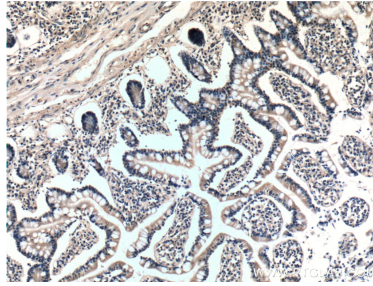
E: proteintech@ptglab.com
W: ptglab.com

This product is exclusively available under Proteintech Group brand and is not available to purchase from any other manufacturer.

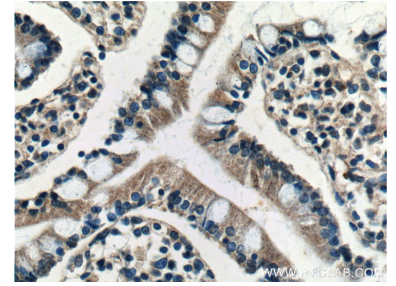
Données de validation sélectionnées



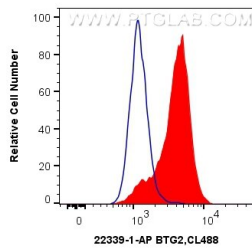
Immunofluorescent analysis of (4% PFA) fixed Neuro-2a cells using BTG2 antibody (22339-1-AP) at dilution of 1:400 and CoraLite®488-Conjugated AffiniPure Goat Anti-Rabbit IgG(H+L).



Immunohistochemical analysis of paraffin-embedded human small intestine tissue slide using 22339-1-AP (BTG2 Antibody) at dilution of 1:200 (under 10x lens).



Immunohistochemical analysis of paraffin-embedded human small intestine tissue slide using 22339-1-AP (BTG2 Antibody) at dilution of 1:200 (under 40x lens).



1X10⁶ SH-SY5Y cells were intracellularly stained with 0.4 ug Anti-Human BTG2 (22339-1-AP) and CoraLite®488-Conjugated AffiniPure Goat Anti-Rabbit IgG(H+L) at dilution 1:1000 (red), or 0.4 ug Control Antibody. Cells were fixed with 4% PFA and permeabilized with Flow Cytometry Perm Buffer (PF00011-C).