

À des fins de recherche uniquement

Anticorps Polyclonal de lapin anti-BRCA1



Numéro de catalogue: 22362-1-AP

Phare

28 Publications

Informations de base

Numéro de catalogue:
22362-1-AP

Taille:
150ul, Concentration: 600 µg/ml by
Nanodrop;

Hôte:
Lapin

Isotype:
IgG

Immunogen Catalog Number:
AG17946

Numéro d'acquisition GenBank:
BC115037

Identification du gène (NCBI):
672

Nom complet:
breast cancer 1, early onset

MW calculé:
1863 aa, 208 kDa

MW observés:
300 kDa

Méthode de purification:
Purification par affinité contre
l'antigène

Dilutions recommandées:
WB 1:1000-1:4000
IHC 1:500-1:2000

Applications

Applications testées:
IHC, WB, ELISA

Demandes citées:
ChIP, IF, IHC, IP, WB

Spécificité de l'espèce:
Humain

Espèces citées:
Humain, souris

Contrôles positifs:

WB : cellules MCF-7,

IHC : tissu de tumeur ovarienne humain, tissu de cancer du poumon humain, tissu de cancer du sein humain

Remarque-IHC: il est suggéré de démasquer l'antigène avec un tampon de TE buffer pH 9,0; (*) À défaut, le démasquage de l'antigène peut être effectué avec un tampon citrate pH 6,0.

Informations générales

BRCA1, also named as RNF53, plays a central role in DNA repair by facilitating cellular response to DNA repair. It is required for appropriate cell cycle arrests after ionizing irradiation in both the S-phase and the G2 phase of the cell cycle. The BRCA1-BARD1 heterodimer coordinates a diverse range of cellular pathways such as DNA damage repair, ubiquitination and transcriptional regulation to maintain genomic stability. BRCA1 acts by mediating ubiquitin E3 ligase activity that is required for its tumor suppressor function. It is involved in transcriptional regulation of P21 in response to DNA damage. BRCA1 is required for FANCD2 targeting to sites of DNA damage. It may function as a transcriptional regulator. BRCA1 inhibits lipid synthesis by binding to inactive phosphorylated ACACA and preventing its dephosphorylation. The antibody is specific to BRCA1. BRCA1 appears to produce multiple splice variants. BRCA1 is a nuclear protein with a molecular mass of 220 kDa. The present study describes the isolation and expression of two cDNAs of BRCA1, including a splice variant designated BRCA1D672-4095. BRCA1D672-4095 is generated by exclusion of exon 11 by in-frame splicing and produces a 97 kDa protein. In contrast to BRCA1, BRCA1D672-4095 localizes to the cytoplasm.

Publications notables

Autrice	Pubmed ID	Journal	Application
X Bian	28945226	Oncogene	WB,IHC
Limei Ji	34455779	J Med Chem	WB
Jingyuan Sun	33087136	J Exp Clin Cancer Res	WB

Stockage

Stockage:

Stocker à -20°C. Stable pendant un an après l'expédition.

Tampon de stockage:

PBS avec azoture de sodium à 0,02 % et glycérol à 50 % pH 7,3

L'aliquotage n'est pas nécessaire pour le stockage à -20C

*** Les 20ul contiennent 0,1% de BSA.

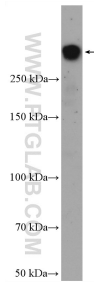
For technical support and original validation data for this product please contact:

T: 1 (888) 4PTGLAB (1-888-478-4522) (toll free in USA), or 1(312) 455-8498 (outside USA)

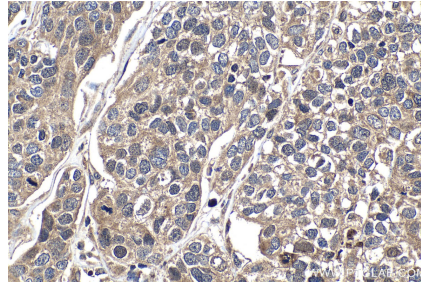
E: proteintech@ptglab.com
W: ptglab.com

This product is exclusively available under Proteintech Group brand and is not available to purchase from any other manufacturer.

Données de validation sélectionnées



MCF-7 cells were subjected to SDS PAGE followed by western blot with 22362-1-AP (BRCA1 antibody) at dilution of 1:2000 incubated at room temperature for 1.5 hours.



Immunohistochemical analysis of paraffin-embedded human ovary tumor tissue slide using 22362-1-AP (BRCA1 antibody) at dilution of 1:1000 (under 40x lens). Heat mediated antigen retrieval with Tris-EDTA buffer (pH 9.0).