

À des fins de recherche uniquement

Anticorps Polyclonal de lapin anti- DCP1A



Numéro de catalogue: 22373-1-AP

4 Publications

Informations de base

Numéro de catalogue: 22373-1-AP	Numéro d'acquisition GenBank: BC007439	Méthode de purification: Purifié par affinité contre l'antigène
Taille: 150ul, Concentration: 650 µg/ml by Nanodrop and 333 µg/ml by Bradford method using BSA as the standard;	Identification du gène (NCBI): 55802	Dilutions recommandées: WB 1:2000-1:10000 IP 0.5-4.0 ug for IP and 1:1000-1:6000 for WB
Hôte: Lapin	Nom complet: DCP1 decapping enzyme homolog A (S. cerevisiae)	IHC 1:20-1:200 IF 1:200-1:800
Isotype: IgG	MW calculé: 582 aa, 63 kDa	
Immunogen Catalog Number: AG18027	MW observés: 70 kDa	

Applications

Applications testées:
FC, IF, IHC, IP, WB, ELISA

Demandes citées:
IF, IP, WB

Spécificité de l'espèce:
Humain, rat, souris

Espèces citées:
Humain, souris

Remarque-IHC: il est suggéré de démasquer l'antigène avec un tampon de TE buffer pH 9,0; (*) A défaut, 'le démasquage de l'antigène peut être 'effectué avec un tampon citrate pH 6,0.

Contrôles positifs:

WB: cellules HEK-293, cellules Jurkat, cellules MCF-7, tissu cérébral de rat, tissu cérébral de souris, tissu pulmonaire de souris

IP: tissu cérébral de souris,

IHC: tissu pulmonaire de souris,

IF: cellules HepG2,

Informations générales

DCP1 decapping enzyme homolog A (S. cerevisiae), known as mRNA-decapping enzyme 1A (DCP1A), is necessary for the degradation of mRNAs, both in normal mRNA turnover and in nonsense-mediated mRNA decay. Removes the 7-methyl guanine cap structure from mRNA molecules, yielding a 5'-phosphorylated mRNA fragment and 7m-GDP. Contributes to the transactivation of target genes after stimulation by TGFβ1. This antibody specifically react with the 70kd DCP1A protein.

Publications notables

Autrice	Pubmed ID	Journal	Application
Dongxu Jiang	29537490	FEBS Lett	WB,IF
Yuanyuan Zhang	37065560	J Thorac Dis	WB
Nicolas Curdy	36884350	Cell Rep	IF,IP

Stockage

Stockage:

Stocker à -20°C. Stable pendant un an après l'expédition.

Tampon de stockage:

PBS avec azoture de sodium à 0,02 % et glycérol à 50 % pH 7,3

L'aliquotage n'est pas nécessaire pour le stockage à -20C

*** Les 20ul contiennent 0,1% de BSA.

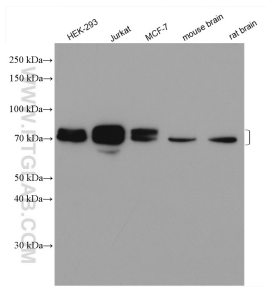
For technical support and original validation data for this product please contact:

T: 1 (888) 4PTGLAB (1-888-478-4522) (toll free in USA), or 1(312) 455-8498 (outside USA)

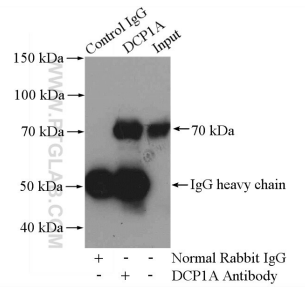
E: proteintech@ptglab.com
W: ptglab.com

This product is exclusively available under Proteintech Group brand and is not available to purchase from any other manufacturer.

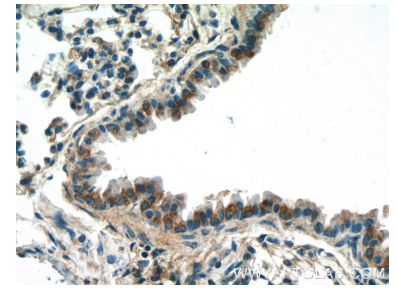
Données de validation sélectionnées



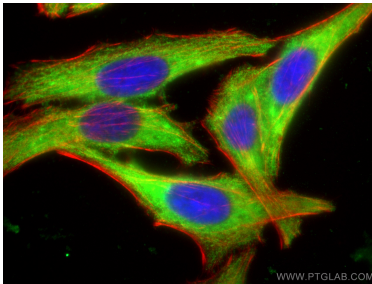
Various lysates were subjected to SDS PAGE followed by western blot with 22373-1-AP (DCP1A antibody) at dilution of 1:5000 incubated at room temperature for 1.5 hours.



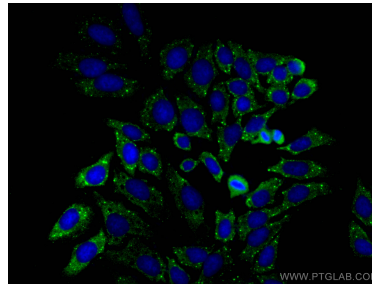
IP Result of anti-DCP1A (IP:22373-1-AP, 4ug; Detection:22373-1-AP 1:3000) with mouse brain tissue lysate 3200ug.



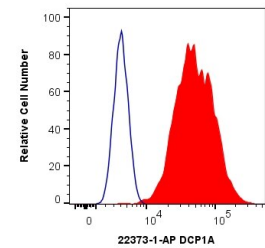
Immunohistochemical analysis of paraffin-embedded mouse lung tissue slide using 22373-1-AP (DCP1A Antibody) at dilution of 1:50 (under 40x lens).



Immunofluorescent analysis of (-20°C Ethanol) fixed HepG2 cells using DCP1A antibody (22373-1-AP) at dilution of 1:400 and CoraLite®488-Conjugated AffiniPure Goat Anti-Rabbit IgG(H+L), CL594-Phalloidin (red).



Immunofluorescent analysis of (-20°C Ethanol) fixed HepG2 cells using DCP1A antibody (22373-1-AP) at dilution of 1:400 and CoraLite®488-Conjugated AffiniPure Goat Anti-Rabbit IgG(H+L).



1×10^6 HeLa cells were intracellularly stained with 0.4 ug Anti-Human DCP1A (22373-1-AP) and CoraLite®488-Conjugated AffiniPure Goat Anti-Rabbit IgG(H+L) at dilution 1:1000 (red), or 0.4 ug Isotype Control. Cells were fixed with 4% PFA and permeabilized with Flow Cytometry Perm Buffer (PF00011-C).