

À des fins de recherche uniquement

Anticorps Polyclonal de lapin anti-Syntenin-1



Numéro de catalogue: 22399-1-AP

Phare

14 Publications

Informations de base

Numéro de catalogue:
22399-1-AP

Taille:
150ul, Concentration: 800 µg/ml by Nanodrop and 367 µg/ml by Bradford method using BSA as the standard;

Hôte:
Lapin

Isotype:
IgG

Immunogen Catalog Number:
AG18078

Numéro d'acquisition GenBank:
BC113674

Identification du gène (NCBI):
6386

Nom complet:
syndecan binding protein (syntenin)

MW calculé
298 aa, 32 kDa

MW observés:
32 kDa

Méthode de purification:
Purification par affinité contre l'antigène

Dilutions recommandées:
WB 1:500-1:2000
IP 0.5-4.0 ug for IP and 1:500-1:2000 for WB
IHC 1:50-1:500
IF 1:200-1:800

Applications

Applications testées:
FC, IF, IHC, IP, WB, ELISA

Demandes citées:
IHC, WB

Spécificité de l'espèce:
Humain

Espèces citées:
Humain, souris

Remarque-IHC: il est suggéré de démasquer l'antigène avec un tampon de TE buffer pH 9,0; (*) À défaut, le démasquage de l'antigène peut être effectué avec un tampon citrate pH 6,0.

Contrôles positifs:

WB : cellules A549, cellules HeLa, cellules HepG2, tissu placentaire humain

IP : cellules HeLa,

IHC : tissu de cancer du foie humain, tissu cardiaque humain

IF : cellules HeLa,

Informations générales

Syntenin-1, also known as SDCBP (syndecan binding protein) and MDA-9 (melanoma differentiation-associated protein 9), was initially identified as a molecule linking syndecan-mediated signaling to the cytoskeleton. Syntenin-1 is a PDZ-domain-containing molecule that has many interaction partners, and regulates transmembrane-receptor trafficking, cell adhesion, tumor-cell metastasis and neuronal-synapse function. Syntenin-1 is primarily localized to membrane-associated adherens junctions and focal adhesions but is also found at the endoplasmic reticulum and nucleus.

Publications notables

Autrice	Pubmed ID	Journal	Application
Qingyan Wu	36184032	Cell Mol Gastroenterol Hepatol	WB
Denghui Wei	32958903	Cell Res	WB
Ningye Ma	32902825	Cell Oncol (Dordr)	WB

Stockage

Stockage:

Stocker à -20°C. Stable pendant un an après l'expédition.

Tampon de stockage:

PBS avec azoture de sodium à 0,02 % et glycérol à 50 % pH 7,3

L'aliquotage n'est pas nécessaire pour le stockage à -20C

*** Les 20ul contiennent 0,1% de BSA.

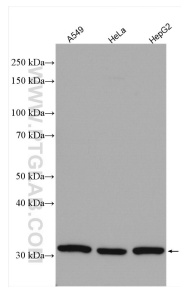
For technical support and original validation data for this product please contact:

T: 1 (888) 4PTGLAB (1-888-478-4522) (toll free in USA), or 1(312) 455-8498 (outside USA)

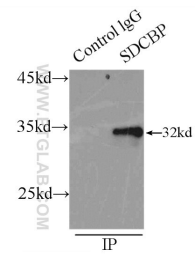
E: proteintech@ptglab.com
W: ptglab.com

This product is exclusively available under Proteintech Group brand and is not available to purchase from any other manufacturer.

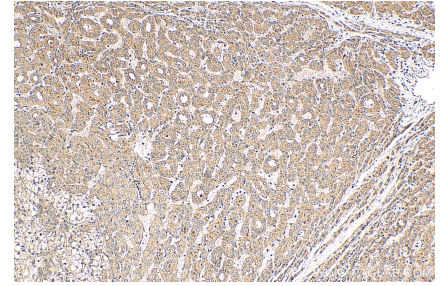
Données de validation sélectionnées



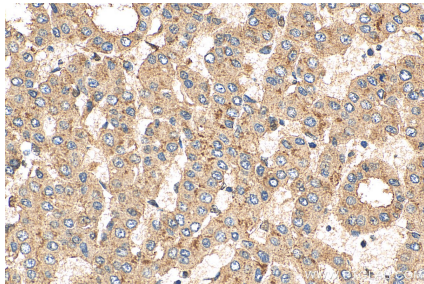
Various lysates were subjected to SDS PAGE followed by western blot with 22399-1-AP (Syntenin-1 antibody) at dilution of 1:1000 incubated at room temperature for 1.5 hours.



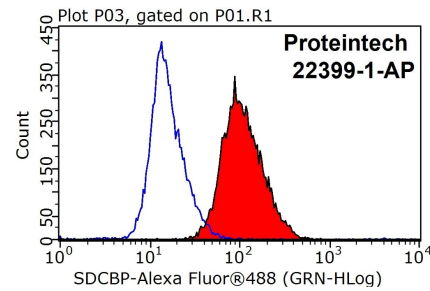
IP Result of anti-Syntenin-1 (IP:22399-1-AP, 3ug; Detection:22399-1-AP 1:1000) with HeLa cells lysate 2500ug.



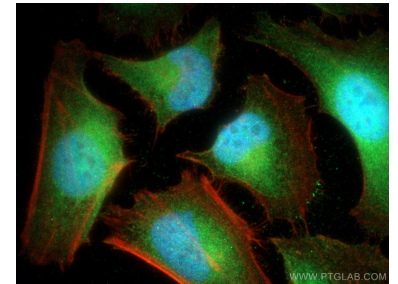
Immunohistochemical analysis of paraffin-embedded human liver cancer tissue slide using 22399-1-AP (Syntenin-1 antibody) at dilution of 1:200 (under 10x lens). Heat mediated antigen retrieval with Tris-EDTA buffer (pH 9.0).



Immunohistochemical analysis of paraffin-embedded human liver cancer tissue slide using 22399-1-AP (Syntenin-1 antibody) at dilution of 1:200 (under 40x lens). Heat mediated antigen retrieval with Tris-EDTA buffer (pH 9.0).



1X10⁶ HepG2 cells were stained with 0.2ug Syntenin-1 antibody (22399-1-AP, red) and control antibody (blue). Fixed with 90% MeOH blocked with 3% BSA (30 min). Alexa Fluor 488-conjugated AffiniPure Goat Anti-Rabbit IgG(H+L) with dilution 1:1000.



Immunofluorescent analysis of (4% PFA) fixed HeLa cells using Syntenin-1 antibody (22399-1-AP) at dilution of 1:400 and CoraLite@488-Conjugated AffiniPure Goat Anti-Rabbit IgG(H+L), CL594-Phalloidin (red).