

À des fins de recherche uniquement

Anticorps Polyclonal de lapin anti-CSNK2B



Numéro de catalogue: 22418-1-AP

2 Publications

Informations de base

Numéro de catalogue:

22418-1-AP

Taille:

150ul, Concentration: 450 µg/ml by Nanodrop and 320 µg/ml by Bradford method using BSA as the standard;

Hôte:

Lapin

Isotype:

IgG

Immunogen Catalog Number:

AG18134

Numéro d'acquisition GenBank:

BC112017

Identification du gène (NCBI):

1460

Nom complet:

casein kinase 2, beta polypeptide

MW calculé

215 aa, 25 kDa

MW observés:

25-30 kDa

Méthode de purification:

Purification par affinité contre l'antigène

Dilutions recommandées:

WB 1:1000-1:6000

IHC 1:50-1:500

Applications

Applications testées:

FC, IHC, WB, ELISA

Demandes citées:

WB

Spécificité de l'espèce:

Humain, souris

Espèces citées:

Humain, souris

Remarque-IHC: il est suggéré de démasquer l'antigène avec un tampon de TE buffer pH 9,0; (*) A défaut, 'le démasquage de l'antigène peut être 'effectué avec un tampon citrate pH 6,0.

Contrôles positifs:

WB : cellules HeLa, cellules HepG2, cellules K-562, cellules MCF-7, cellules NIH/3T3

IHC : tissu testiculaire humain, tissu cérébral de souris, tissu testiculaire de souris, tissu thyroïdien humain

Informations générales

CSNK2B is a ubiquitous protein kinase which regulates metabolic pathways, signal transduction, transcription, translation, and replication. The enzyme is composed of three subunits, alpha, alpha prime and beta, which form a tetrameric holoenzyme. The alpha and alpha prime subunits are catalytic, while the beta subunit serves regulatory functions. The enzyme localizes to the endoplasmic reticulum and the Golgi apparatus. It participates in Wnt signaling, and plays a complex role in regulating the basal catalytic activity of the alpha subunit.

Publications notables

Autrice	Pubmed ID	Journal	Application
Hiroki Okanishi	36357940	Cancer Metab	WB
Yan Zhang	31987502	Biochem Biophys Res Commun	WB

Stockage

Stockage:

Stocker à -20°C. Stable pendant un an après l'expédition.

Tampon de stockage:

PBS avec azoture de sodium à 0,02 % et glycérol à 50 % pH 7,3

L'aliquote n'est pas nécessaire pour le stockage à -20C

*** Les 20ul contiennent 0,1% de BSA.

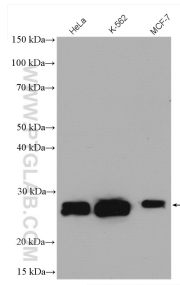
For technical support and original validation data for this product please contact:

T: 1 (888) 4PTGLAB (1-888-478-4522) (toll free in USA), or 1(312) 455-8498 (outside USA)

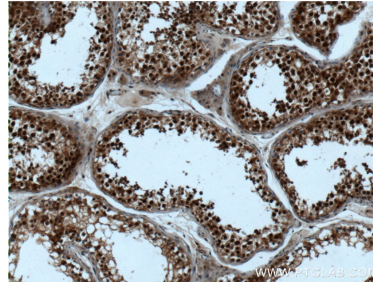
E: proteintech@ptglab.com
W: ptglab.com

This product is exclusively available under Proteintech Group brand and is not available to purchase from any other manufacturer.

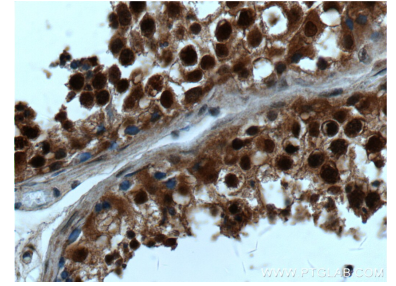
Données de validation sélectionnées



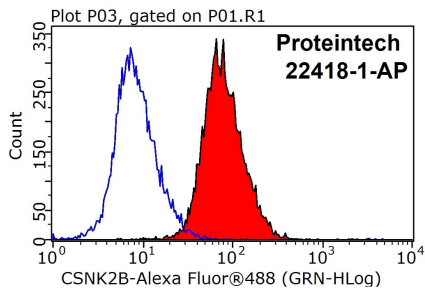
Various lysates were subjected to SDS PAGE followed by western blot with 22418-1-AP (Casein Kinase 2 beta antibody) at dilution of 1:3000 incubated at room temperature for 1.5 hours.



Immunohistochemical analysis of paraffin-embedded human testis tissue slide using 22418-1-AP (Casein Kinase 2 beta antibody) at dilution of 1:200 (under 10x lens).



Immunohistochemical analysis of paraffin-embedded human testis tissue slide using 22418-1-AP (Casein Kinase 2 beta antibody) at dilution of 1:200 (under 40x lens).



1X10⁶ HeLa cells were stained with 0.2ug Casein Kinase 2 beta antibody (22418-1-AP, red) and control antibody (blue). Fixed with 90% MeOH blocked with 3% BSA (30 min). Alexa Fluor 488-conjugated AffiniPure Goat Anti-Rabbit IgG(H+L) with dilution 1:1000.