

À des fins de recherche uniquement

Anticorps Polyclonal de lapin anti-ERBB2IP



Numéro de catalogue: 22438-1-AP

Phare

3 Publications

Informations de base

Numéro de catalogue:

22438-1-AP

Taille:

150ul, Concentration: 800 µg/ml by Nanodrop and 467 µg/ml by Bradford method using BSA as the standard;

Hôte:

Lapin

Isotype:

IgG

Immunogen Catalog Number:

AG18206

Numéro d'acquisition GenBank:

BC115012

Identification du gène (NCBI):

55914

Nom complet:

erbb2 interacting protein

MW calculé

1412 aa, 158 kDa

MW observés:

150-180 kDa

Méthode de purification:

Purification par affinité contre l'antigène

Dilutions recommandées:

WB 1:1000-1:8000

IHC 1:50-1:500

IF 1:50-1:500

Applications

Applications testées:

IF, IHC, WB, ELISA

Demandes citées:

IHC, WB

Spécificité de l'espèce:

Humain

Espèces citées:

Humain

Remarque-IHC: il est suggéré de démasquer l'antigène avec un tampon de TE buffer pH 9,0; (*) À défaut, 'le démasquage de l'antigène peut être 'effectué avec un tampon citrate pH 6,0.

Contrôles positifs:

WB : cellules HeLa, cellules MCF-7

IHC : tissu rénal humain,

IF : cellules MCF-7,

Informations générales

ERBB2IP is a cytoplasmic protein that contains leucine-rich repeats (LRR) and PSD95/Dlg1/zo-1 (PDZ) domain (thus named a LAP protein). ERBB2IP interacts, via its single PDZ domain, specifically with ErbB2, but not with ErbB3, ErbB4, or EGFR. It is colocalized with ErbB2 at the basolateral membranes of epithelial cells. In addition, ERBB2IP also interacts with PSD-95, Lano and with three p120-related catenins, eBPAG1 and the $\beta 4$ subunit of the $\alpha 6\beta 4$ integrin, two major components of hemidesmosomes. The molecular weight of ERBB2IP was predicted 150-180 kDa by Western Blot.(PMID: 25288731, PMID: 24252174, PMID: 19289088)

Publications notables

Autrice	Pubmed ID	Journal	Application
Ye Tan	32963622	Oncol Lett	WB,IHC
J J Lyons	28126831	J Exp Med	
Alejandra Valenzuela-Iglesias	30655320	Mol Cancer Res	WB

Stockage

Stockage:

Stocker à -20°C. Stable pendant un an après l'expédition.

Tampon de stockage:

PBS avec azoture de sodium à 0,02 % et glycérol à 50 % pH 7,3

L'aliquotage n'est pas nécessaire pour le stockage à -20C

*** Les 20ul contiennent 0,1% de BSA.

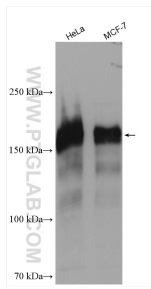
For technical support and original validation data for this product please contact:

T: 1 (888) 4PTGLAB (1-888-478-4522) (toll free in USA), or 1(312) 455-8498 (outside USA)

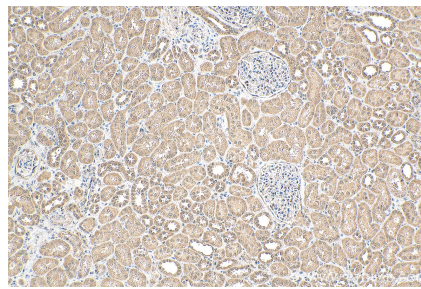
E: proteintech@ptglab.com
W: ptglab.com

This product is exclusively available under Proteintech Group brand and is not available to purchase from any other manufacturer.

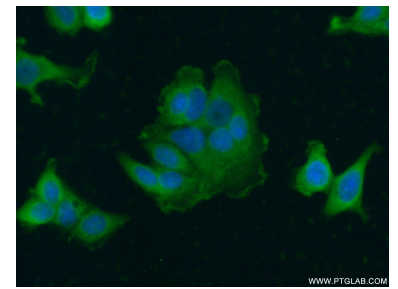
Données de validation sélectionnées



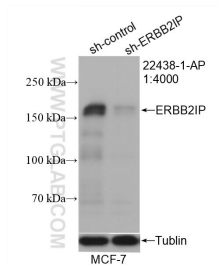
Various lysates were subjected to SDS PAGE followed by western blot with 22438-1-AP (ERBB2IP antibody) at dilution of 1:4000 incubated at room temperature for 1.5 hours.



Immunohistochemical analysis of paraffin-embedded human kidney tissue slide using 22438-1-AP (ERBB2IP antibody) at dilution of 1:200 (under 10x lens). Heat mediated antigen retrieval with Tris-EDTA buffer (pH 9.0).



Immunofluorescent analysis of (-20°C Ethanol) fixed MCF-7 cells using 22438-1-AP (ERBB2IP antibody) at dilution of 1:50 and Alexa Fluor 488-conjugated AffiniPure Goat Anti-Rabbit IgG(H+L).



WB result of ERBB2IP antibody (22438-1-AP; 1:4000; incubated at room temperature for 1.5 hours) with sh-Control and sh-ERBB2IP transfected MCF-7 cells.