

À des fins de recherche uniquement

Anticorps Polyclonal de lapin anti-LARG



Numéro de catalogue: 22441-1-AP

Phare

4 Publications

Informations de base

Numéro de catalogue: 22441-1-AP	Numéro d'acquisition GenBank: BC063117	Méthode de purification: Purification par affinité contre l'antigène
Taille: 150ul, Concentration: 1000 µg/ml by Nanodrop and 493 µg/ml by Bradford method using BSA as the standard;	Identification du gène (NCBI): 23365	Dilutions recommandées: WB 1:1000-1:4000 IHC 1:20-1:200 IF 1:20-1:200
Hôte: Lapin	Nom complet: Rho guanine nucleotide exchange factor (GEF) 12	
Isotype: IgG	MW calculé: 1544 aa, 173 kDa	
Immunogen Catalog Number: AG18211	MW observés: 220 kDa	

Applications

Applications testées:

IF, IHC, WB, ELISA

Demandes citées:

IHC, WB

Spécificité de l'espèce:

Humain

Espèces citées:

Humain, souris

Remarque-IHC: il est suggéré de démasquer l'antigène avec un tampon de TE buffer pH 9,0; (*) À défaut, 'le démasquage de l'antigène peut être 'effectué avec un tampon citrate pH 6,0.

Contrôles positifs:

WB : cellules Jurkat, cellules HeLa

IHC : tissu testiculaire humain,

IF : cellules HepG2, cellules HeLa

Informations générales

LARG, also known as ARHGEF12, is one of three regulator of G protein signalling (RGS) domain-containing RhoGEFs. LARG activates the ROCK pathway downstream of Gα12/13 signaling, leading to cytoskeletal reorganisation. LARG performs this activity either as a homodimer or as a heterodimer with Arhgef11. LARG has been implicated in many diseases, including cancer, heart disease, and in HIV viral replication. LARG is phosphorylated and dephosphorylated during mitosis and that Cdk1 is the mitotic kinase responsible for LARG phosphorylation. We got 220 kDa in western blotting, maybe due to its phosphorylation.

Publications notables

Autrice	Pubmed ID	Journal	Application
Feng Zhang	33085791	Br J Pharmacol	WB
Hongyu Sun	36233059	Int J Mol Sci	WB
Zonghui Ding	32693062	Am J Pathol	WB,IHC

Stockage

Stockage:

Stocker à -20°C. Stable pendant un an après l'expédition.

Tampon de stockage:

PBS avec azoture de sodium à 0,02 % et glycérol à 50 % pH 7,3

L'aliquotage n'est pas nécessaire pour le stockage à -20C

*** Les 20ul contiennent 0,1% de BSA.

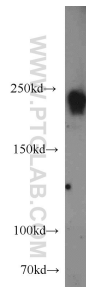
For technical support and original validation data for this product please contact:

T: 1 (888) 4PTGLAB (1-888-478-4522) (toll free in USA), or 1(312) 455-8498 (outside USA)

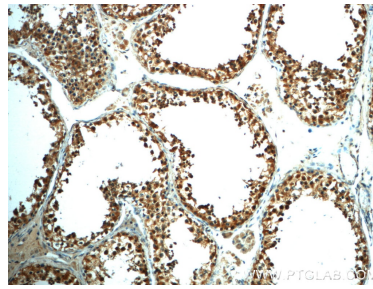
E: proteintech@ptglab.com
W: ptglab.com

This product is exclusively available under Proteintech Group brand and is not available to purchase from any other manufacturer.

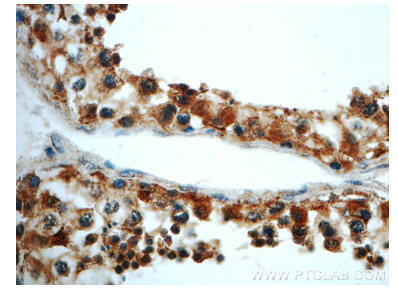
Données de validation sélectionnées



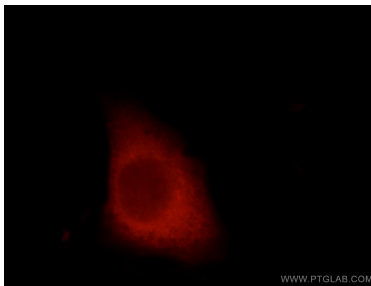
Jurkat cells were subjected to SDS PAGE followed by western blot with 22441-1-AP (LARG antibody) at dilution of 1:2000 incubated at room temperature for 1.5 hours.



Immunohistochemical analysis of paraffin-embedded human testis slide using 22441-1-AP (LARG Antibody) at dilution of 1:50.



Immunohistochemical analysis of paraffin-embedded human testis slide using 22441-1-AP (LARG Antibody) at dilution of 1:50.



Immunofluorescent analysis of HepG2 cells, using ARHGEF12 antibody 22441-1-AP at 1:50 dilution and Rhodamine-labeled goat anti-rabbit IgG (red).