

À des fins de recherche uniquement

# Anticorps Polyclonal de lapin anti-NR5A2



Numéro de catalogue: 22460-1-AP

Phare

7 Publications

## Informations de base

<b>Numéro de catalogue:</b> 22460-1-AP	<b>Numéro d'acquisition GenBank:</b> BC118652	<b>Méthode de purification:</b> Purifié par affinité contre l'antigène
<b>Taille:</b> 150ul, Concentration: 750 µg/ml by Nanodrop;	<b>Identification du gène (NCBI):</b> 2494	<b>Dilutions recommandées:</b> WB 1:500-1:2000
<b>Hôte:</b> Lapin	<b>Nom complet:</b> nuclear receptor subfamily 5, group A, member 2	
<b>Isotype:</b> IgG	<b>MW calculé</b> 541 aa, 61 kDa	
<b>Immunogen Catalog Number:</b> AG18001	<b>MW observés:</b> 61-67 kDa	

## Applications

**Applications testées:**  
WB, ELISA

**Demandes citées:**  
IF, IHC, WB

**Spécificité de l'espèce:**  
Humain, rat, souris

**Espèces citées:**  
Humain, souris

**Contrôles positifs:**

WB : cellules A549, cellules BxPC-3, tissu hépatique de souris, tissu ovarien de souris, tissu pancréatique de souris, tissu testiculaire de rat

## Informations générales

NR5A2 belongs to the nuclear hormone receptor family NR5 subfamily. It binds to the sequence element 5'-AACGACCGACCTTGAG-3' of the enhancer II of hepatitis B virus genes, a critical cis-element of their expression and regulation. NR5A2 may be responsible for the liver-specific activity of enhancer II, probably in combination with other hepatocyte transcription factors. Key regulator of cholesterol 7-alpha-hydroxylase gene (CYP7A) expression in liver. It may also contribute to the regulation of pancreas-specific genes and play important roles in embryonic development. LRH-1 is phosphorylated to display its normal function, including its role in the intriguing potential responses to phospholipid or other ligands. The hinge domain serine residues at 238 and 243 are required for effective phosphorylation, both in vitro and in cells (16439367). NR5A1 is abundantly expressed in pancreas, less in liver, very low levels in heart and lung. Expressed in hepG2. Isoform 1 and isoform 2 seem to be present in fetal and adult liver and hepG2 cells. The observed molecular weight of 65-70 kDa is the phosphorylation of NR5A2 protein.

## Publications notables

Autrice	Pubmed ID	Journal	Application
Tao He	33230458	Mol Ther Nucleic Acids	WB
Kun Zhang	34277436	Front Oncol	WB, IHC
Jinxin Liu	31911244	Pharmacol Res	WB

## Stockage

**Stockage:**

Stocker à -20°C. Stable pendant un an après l'expédition.

**Tampon de stockage:**

PBS avec azoture de sodium à 0,02 % et glycérol à 50 % pH 7,3

L'aliquotage n'est pas nécessaire pour le stockage à -20°C

\*\*\* Les 20ul contiennent 0,1% de BSA.

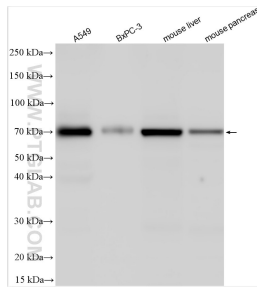
For technical support and original validation data for this product please contact:

T: 1 (888) 4PTGLAB (1-888-478-4522) (toll free in USA), or 1(312) 455-8498 (outside USA)

E: proteintech@ptglab.com  
W: ptglab.com

This product is exclusively available under Proteintech Group brand and is not available to purchase from any other manufacturer.

## Données de validation sélectionnées



Various lysates were subjected to SDS PAGE followed by western blot with 22460-1-AP (NR5A2 antibody) at dilution of 1:1000 incubated at room temperature for 1.5 hours.