

À des fins de recherche uniquement

Anticorps Polyclonal de lapin anti-CEP290



Numéro de catalogue: 22490-1-AP

Phare

12 Publications

Informations de base

Numéro de catalogue:

22490-1-AP

Numéro d'acquisition GenBank:

BC008641

Méthode de purification:

Purification par affinité contre l'antigène

Taille:

150ul, Concentration: 1000 µg/ml by Nanodrop and 513 µg/ml by Bradford method using BSA as the standard;

Identification du gène (NCBI):

80184

Dilutions recommandées:

WB 1:500-1:1000

IHC 1:20-1:200

IF 1:50-1:500

Hôte:

Lapin

MW calculé

2479 aa, 290 kDa

Isotype:

IgG

MW observés:

290 kDa

Immunogen Catalog Number:

AG17457

Applications

Applications testées:

IF, IHC, WB, ELISA

Demandes citées:

IF, IHC, IP, WB

Spécificité de l'espèce:

Humain

Espèces citées:

Humain, souris

Remarque-IHC: il est suggéré de démasquer l'antigène avec un tampon de TE buffer pH 9,0; (*) A défaut, le démasquage de l'antigène peut être effectué avec un tampon citrate pH 6,0.

Contrôles positifs:

WB : cellules HeLa,

IHC : tissu placentaire humain,

IF : cellules HeLa,

Informations générales

Studies in the Chlamydomonas model system has shown that the ciliary protein CEP290 is a critical component of these Y-link junctions. Additionally, numerous studies have demonstrated that CEP290's function is critical for IFT- in CEP290 knockdown experiments, many proteins that would normally localize to the cilium fail to do so, and cilium formation is disrupted or absent. Mutations in CEP290 are accountable for cases of nephronophthisis, Leber congenital amaurosis and Joubert syndrome. In IF analysis of HeLa cells, the white arrows show centrosome and cilium staining. Two isoforms were produced by alternative splicing with predicted MW of 290 and 180 kDa according to UniProt. Catalog#22490-1-AP can recognise both.

Publications notables

Autrice	Pubmed ID	Journal	Application
Stephanie O Agbu	29038301	J Cell Biol	IF
Deniz Conkar	31582766	Sci Rep	WB
Rachel E Turn	34818063	Mol Biol Cell	IHC

Stockage

Stockage:

Stocker à -20°C. Stable pendant un an après l'expédition.

Tampon de stockage:

PBS avec azoture de sodium à 0,02 % et glycérol à 50 % pH 7,3

L'aliquotage n'est pas nécessaire pour le stockage à -20C

*** Les 20ul contiennent 0,1% de BSA.

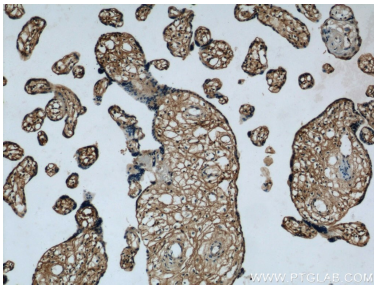
For technical support and original validation data for this product please contact:

T: 1 (888) 4PTGLAB (1-888-478-4522) (toll free in USA), or 1(312) 455-8498 (outside USA)

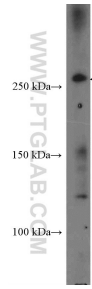
E: proteintech@ptglab.com
W: ptglab.com

This product is exclusively available under Proteintech Group brand and is not available to purchase from any other manufacturer.

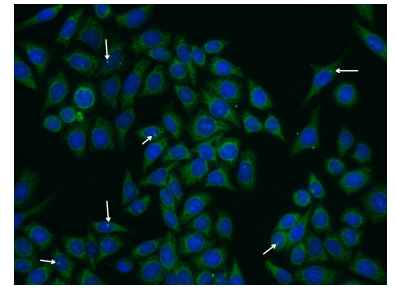
Données de validation sélectionnées



Immunohistochemical analysis of paraffin-embedded human placenta using 22490-1-AP (CEP290 antibody) at dilution of 1:50 (under 10x lens).



HeLa cells were subjected to SDS PAGE followed by western blot with 22490-1-AP (CEP290 Antibody) at dilution of 1:600 incubated at room temperature for 1.5 hours.



Immunofluorescent analysis of (-20°C Ethanol) fixed HeLa cells using 22490-1-AP (CEP290 antibody) at dilution of 1:50 and Alexa Fluor 488-conjugated AffiniPure Goat Anti-Rabbit IgG(H+L).