

À des fins de recherche uniquement

Anticorps Polyclonal de lapin anti-AIRE



Numéro de catalogue: 22517-1-AP

3 Publications

Informations de base

Numéro de catalogue:
22517-1-AP

Taille:
150ul, Concentration: 500 µg/ml by Nanodrop and 273 µg/ml by Bradford method using BSA as the standard;

Hôte:
Lapin

Isotype:
IgG

Immunogen Catalog Number:
AG18249

Numéro d'acquisition GenBank:
BC137270

Identification du gène (NCBI):
326

Nom complet:
autoimmune regulator

MW calculé:
545 aa, 58 kDa

MW observés:
58-69 kDa

Méthode de purification:
Purifié par affinité contre l'antigène

Dilutions recommandées:
WB 1:500-1:2000
IHC 1:50-1:500
IF 1:50-1:500

Applications

Applications testées:
IF, IHC, WB, ELISA

Demandes citées:
IF, WB

Spécificité de l'espèce:
Humain, souris

Espèces citées:
Humain, souris

Remarque-IHC: il est suggéré de démasquer l'antigène avec un tampon de TE buffer pH 9,0; (*) A défaut, le démasquage de l'antigène peut être effectué avec un tampon citrate pH 6,0.

Contrôles positifs:

WB : cellules L02, cellules U-937, tissu de thymus de souris, tissu plasmatique humain, tissu splénique humain

IHC : tissu de thymus humain,

IF : cellules HeLa,

Informations générales

The function of the protein is not well defined, however it contains zinc finger motifs suggestive of a transcription factor. The protein (isoform 1) is localized to both the nucleus and cytoplasm. Three splice variant mRNAs products have been described [1]. The longer AIRE1 mRNA appears to be more abundant and includes exons 1 through 14. Splice variant AIRE2 includes a portion of the non-coding region of exon 1, an alternatively spliced longer exon 8, plus exons 9 through 14. Variant AIRE3 includes the same exon 1-8-9 sequences as found in AIRE2 but utilizes additional alternative splicing in exon 10 that shifts the reading frame such that a stop codon in exon 12 is utilized. The resulting protein products of these splice variants differ significantly. Defects in this gene cause the autosomal-recessive systemic autoimmune disease termed autoimmune polyendocrinopathy-candidiasis-ectodermal dystrophy (APECED).

Publications notables

Autrice	Pubmed ID	Journal	Application
Zhongwei Xin	36115836	Nat Commun	IF
Yoshihiko Tomofuji	32601470	Nat Immunol	WB
H M Du	31238861	Biochemistry (Mosc)	WB

Stockage

Stockage:

Stocker à -20°C. Stable pendant un an après l'expédition.

Tampon de stockage:

PBS avec azoture de sodium à 0,02 % et glycérol à 50 % pH 7,3

L'aliquotage n'est pas nécessaire pour le stockage à -20C

*** Les 20ul contiennent 0,1% de BSA.

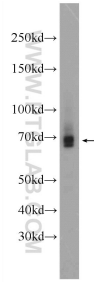
For technical support and original validation data for this product please contact:

T: 1 (888) 4PTGLAB (1-888-478-4522) (toll free in USA), or 1(312) 455-8498 (outside USA)

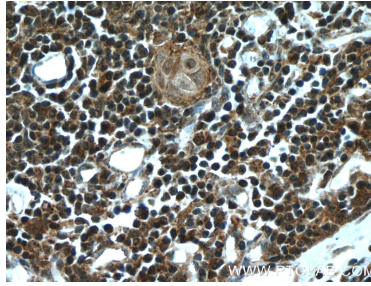
E: proteintech@ptglab.com
W: ptglab.com

This product is exclusively available under Proteintech Group brand and is not available to purchase from any other manufacturer.

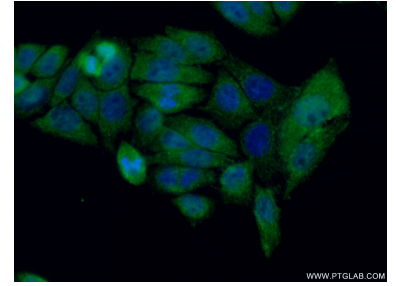
Données de validation sélectionnées



L02 cells were subjected to SDS PAGE followed by western blot with 22517-1-AP (AIRE Antibody) at dilution of 1:1000 incubated at room temperature for 1.5 hours.



Immunohistochemical analysis of paraffin-embedded human thymus tissue slide using 22517-1-AP (AIRE Antibody) at dilution of 1:200 (under 40x lens). Heat mediated antigen retrieval with Tris-EDTA buffer (pH 9.0).



Immunofluorescent analysis of (4% PFA) fixed HeLa cells using 22517-1-AP (AIRE antibody) at dilution of 1:50 and Alexa Fluor 488-conjugated AffiniPure Goat Anti-Rabbit IgG(H+L).