

À des fins de recherche uniquement

# Anticorps Polyclonal de lapin anti-DAT



Numéro de catalogue: 22524-1-AP

34 Publications

## Informations de base

Numéro de catalogue:  
22524-1-AP

Taille:  
150ul, Concentration: 600 µg/ml by  
Nanodrop;

Hôte:  
Lapin

Isotype:  
IgG

Immunogen Catalog Number:  
AG18297

Numéro d'acquisition GenBank:  
BC133003

Identification du gène (NCBI):  
6531

Nom complet:  
solute carrier family 6  
(neurotransmitter transporter,  
dopamine), member 3

MW calculé  
620 aa, 68 kDa

MW observés:  
68 kDa

Méthode de purification:  
Purification par affinité contre  
l'antigène

Dilutions recommandées:  
WB 1:500-1:2000  
IP 0.5-4.0 ug for IP and 1:500-1:1000  
for WB  
IHC 1:50-1:500  
IF 1:50-1:500

## Applications

Applications testées:  
IF, IHC, IP, WB, ELISA

Demandes citées:  
IF, IHC, WB

Spécificité de l'espèce:  
Humain, rat, souris

Espèces citées:  
Humain, rat, souris

**Remarque-IHC: il est suggéré de démasquer  
l'antigène avec un tampon de TE buffer pH  
9.0; (\*) A défaut, 'le démasquage de  
l'antigène peut être 'effectué avec un  
tampon citrate pH 6,0.**

Contrôles positifs:

WB : tissu cérébral de souris,

IP : tissu cérébral de souris,

IHC : tissu cérébral de souris,

IF : tissu cérébral de souris,

## Informations générales

DAT, also name as SLC6A3, is dopamine transporter which is a member of the sodium- and chloride- dependent neurotransmitter transporter family. Dopamine(DA) released from neurons is cleared by the DA transporter (DAT). Altered dopaminergic signaling is linked to multiple neuropsychiatric disorders, such as attention deficit hyperactive disorder, mood disorders, schizophrenia, autism and so on (PMID:30755521). 22524-1-AP can detect 70-80kDa band, which is consistent with the report (PMID:12746456).

## Publications notables

Autrice	Pubmed ID	Journal	Application
Hideaki Kuge	32963038	J Lipid Res	WB,IF
Mo Xu	31535395	J Neurosci Res	
Beatriz Franco	34651324	J Neurosci Res	WB

## Stockage

Stockage:

Stocker à -20°C. Stable pendant un an après l'expédition.

Tampon de stockage:

PBS avec azoture de sodium à 0,02 % et glycérol à 50 % pH 7,3

L'aliquotage n'est pas nécessaire pour le stockage à -20C

\*\*\* Les 20ul contiennent 0,1% de BSA.

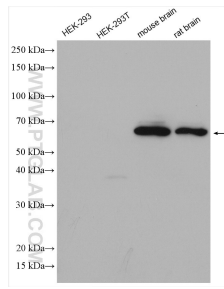
For technical support and original validation data for this product please contact:

T: 1 (888) 4PTGLAB (1-888-478-4522) (toll free  
in USA), or 1(312) 455-8498 (outside USA)

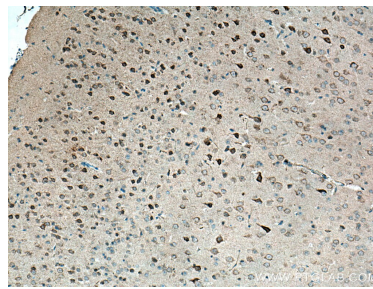
E: proteintech@ptglab.com  
W: ptglab.com

This product is exclusively available under Proteintech Group brand and is not available to purchase from any other manufacturer.

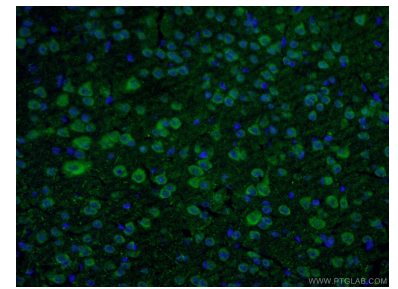
## Données de validation sélectionnées



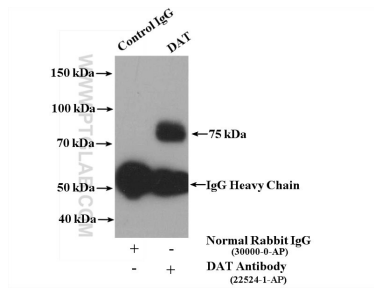
Various lysates were subjected to SDS PAGE followed by western blot with 22524-1-AP (DAT antibody) at dilution of 1:1000 incubated at room temperature for 1.5 hours.



Immunohistochemical analysis of paraffin-embedded mouse brain tissue slide using 22524-1-AP (DAT antibody) at dilution of 1:200 (under 10x lens). Heat mediated antigen retrieval with Tris-EDTA buffer (pH 9.0).



Immunofluorescent analysis of (4% PFA) fixed mouse brain tissue using 22524-1-AP (DAT antibody) at dilution of 1:50 and Alexa Fluor 488-Conjugated AffiniPure Goat Anti-Rabbit IgG(H+L).



IP sample and control were subjected to SDS PAGE followed by western blot with 22524-1-AP (DAT antibody) at dilution of 1:500. 4000ug mouse brain tissue lysate and 4ug antibodies were mixed in the IP experiment.