

À des fins de recherche uniquement

# Anticorps Polyclonal de lapin anti-RFX6



Numéro de catalogue: 22551-1-AP

## Informations de base

Numéro de catalogue:  
22551-1-AP

Taille:  
150ul, Concentration: 800 µg/ml by Nanodrop and 280 µg/ml by Bradford method using BSA as the standard;

Hôte:  
Lapin

Isotype:  
IgG

Immunogen Catalog Number:  
AG18235

Numéro d'acquisition GenBank:  
BC039248

Identification du gène (NCBI):  
222546

Nom complet:  
regulatory factor X, 6

MW calculé  
928 aa, 102 kDa

MW observés:  
102 kDa

Méthode de purification:  
Purification par affinité contre l'antigène

Dilutions recommandées:  
WB 1:200-1:1000

## Applications

Applications testées:  
WB, ELISA

Spécificité de l'espèce:  
Humain

Contrôles positifs:

WB: cellules Caco-2,

## Informations générales

The RFX proteins represent an essential class II transcription factor family that share several conserved regions, including a centrally located DNA-binding domain (DBD) and a C-terminal D region that facilitates dimerization. RFX6, also known as RFXDC1, is a 928 amino acid nuclear protein that, via interactions with other RFX proteins, can bind DNA and is thought to activate the transcription of target genes. RFX6 is specifically expressed in pancreas, small intestine and colon. Mutations in the gene encoding RFX6 is the cause of the Mitchell-Riley syndrome (MIRIS), which is characterized by neonatal diabetes, duodenal and jejunal atresia, a hypoplastic or annular pancreas and absent gallbladder.

## Stockage

Stockage:

Stocker à -20°C. Stable pendant un an après l'expédition.

Tampon de stockage:

PBS avec azoture de sodium à 0,02 % et glycérol à 50 % pH 7,3

L'aliquotage n'est pas nécessaire pour le stockage à -20C

\*\*\* Les 20ul contiennent 0,1% de BSA.

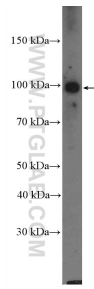
For technical support and original validation data for this product please contact:

T: 1 (888) 4PTGLAB (1-888-478-4522) (toll free in USA), or 1(312) 455-8498 (outside USA)

E: proteintech@ptglab.com  
W: ptglab.com

This product is exclusively available under Proteintech Group brand and is not available to purchase from any other manufacturer.

## Données de validation sélectionnées



Caco-2 cells were subjected to SDS PAGE followed by western blot with 22551-1-AP (RFX6 Antibody) at dilution of 1:300 incubated at room temperature for 1.5 hours.